






## Appendice E

In tale appendice si riportano gli spettri FFT e PSD relativi agli accelerometri 1, 2, 3 e 4 e del microfono ed in particolare quelli relativi ai seguenti campi di frequenza:

- accelerometri 1,2,3 e 4:
  - 0-90 e.o.
  - 77-83 e.o.
- Microfono:
  - 0-90 e.o.
  - 77-83 e.o.

ad intervalli di ½ milione di fino ai 3.000.000 di cicli, e successivamente ad intervalli sempre minori fino all'arresto del banco.

Per seguire l'evoluzione durante la prova delle componenti frequenziali di maggior interesse si è proceduto ad evidenziare tali componenti, figure da E-1 a E-44 :

- Freccia rossa : frequenza di ingranamento test,  $f_{g\text{test}}$  ; 
- Freccia rossa tratteggiata : Frequenza di modulazione ruota test; 
- Rettangolo verde : frequenza di switching inverter (4000 Hz); 
- Rettangolo verde tratteggiato : 2x frequenza di switching inverter (8000 Hz); 
- Rettangolo celeste : frequenze di disturbo elettrico. 

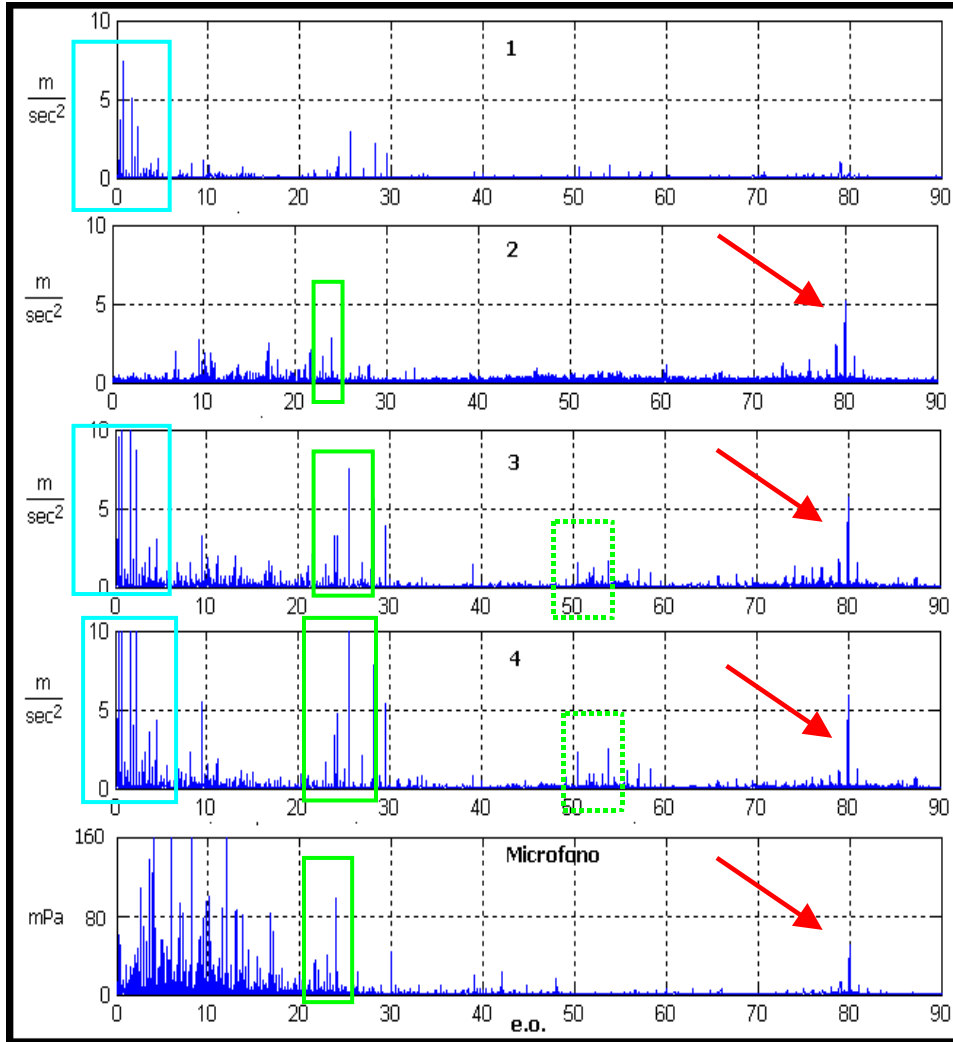


Figura E- 1 0 cicli 0-90 FFT

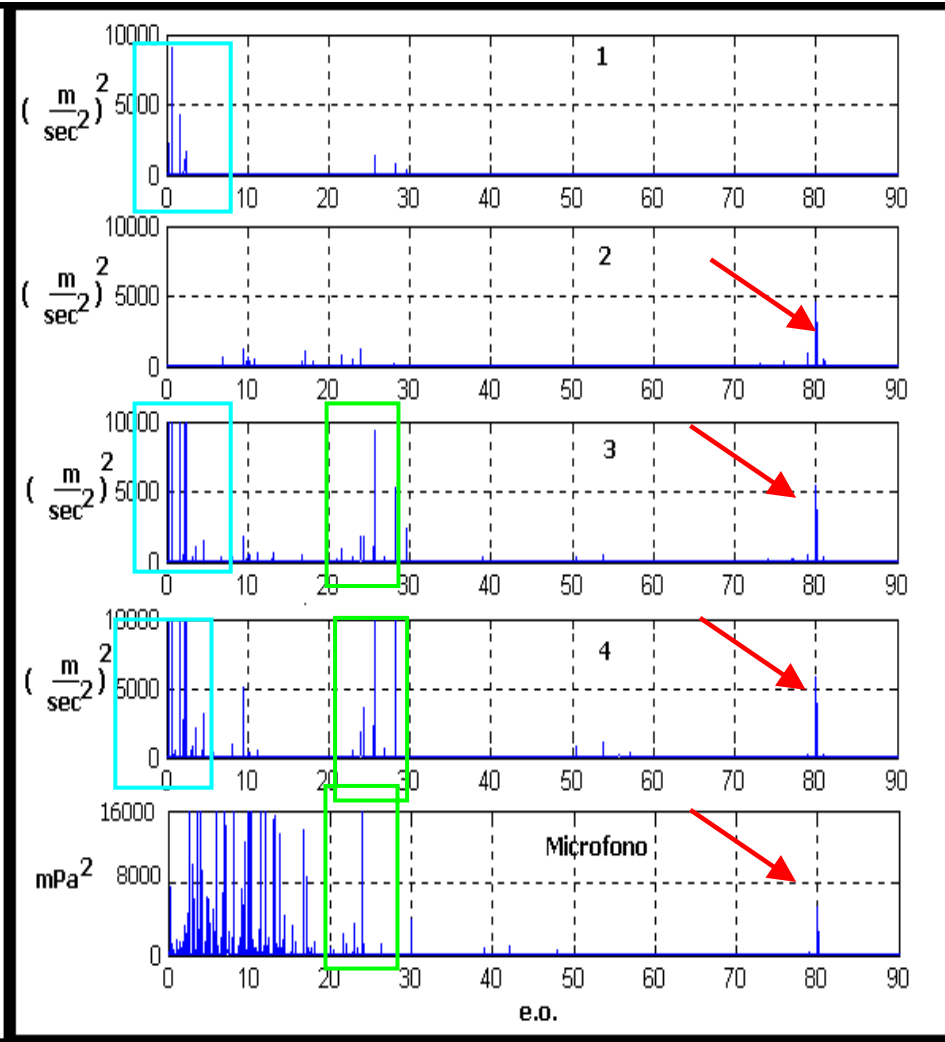


Figura E- 2 0 cicli 0-90 PSD

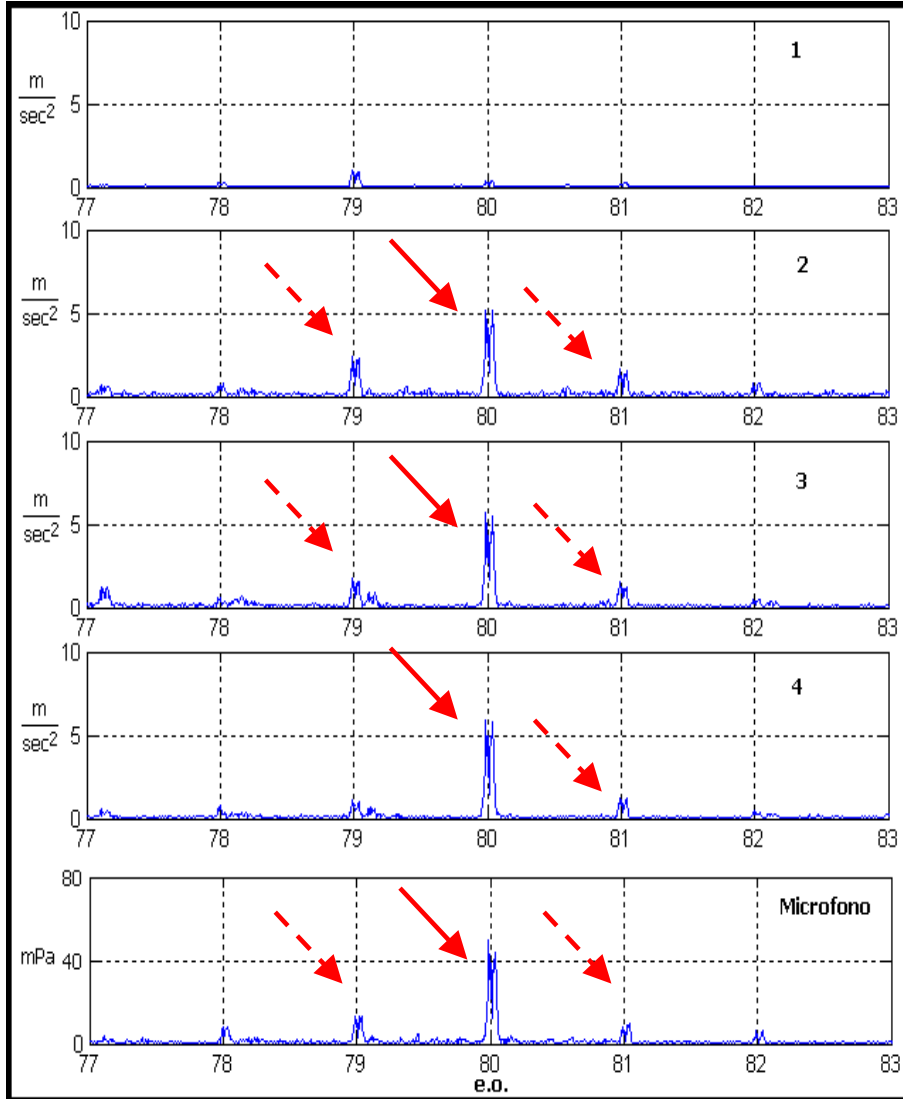


Figura E- 3 0 cicli 77-83 FFT

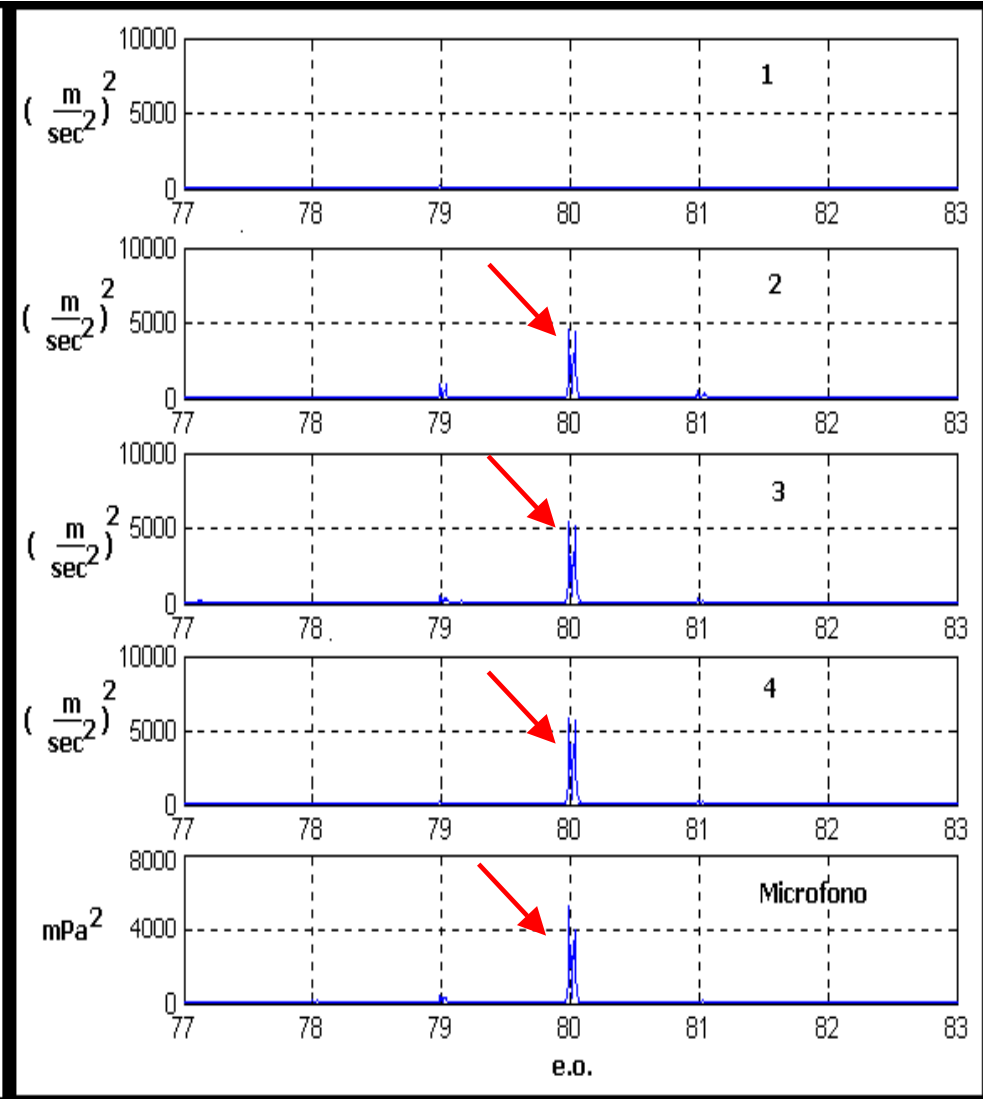


Figura E- 4 0 cicli 77-83 PSD

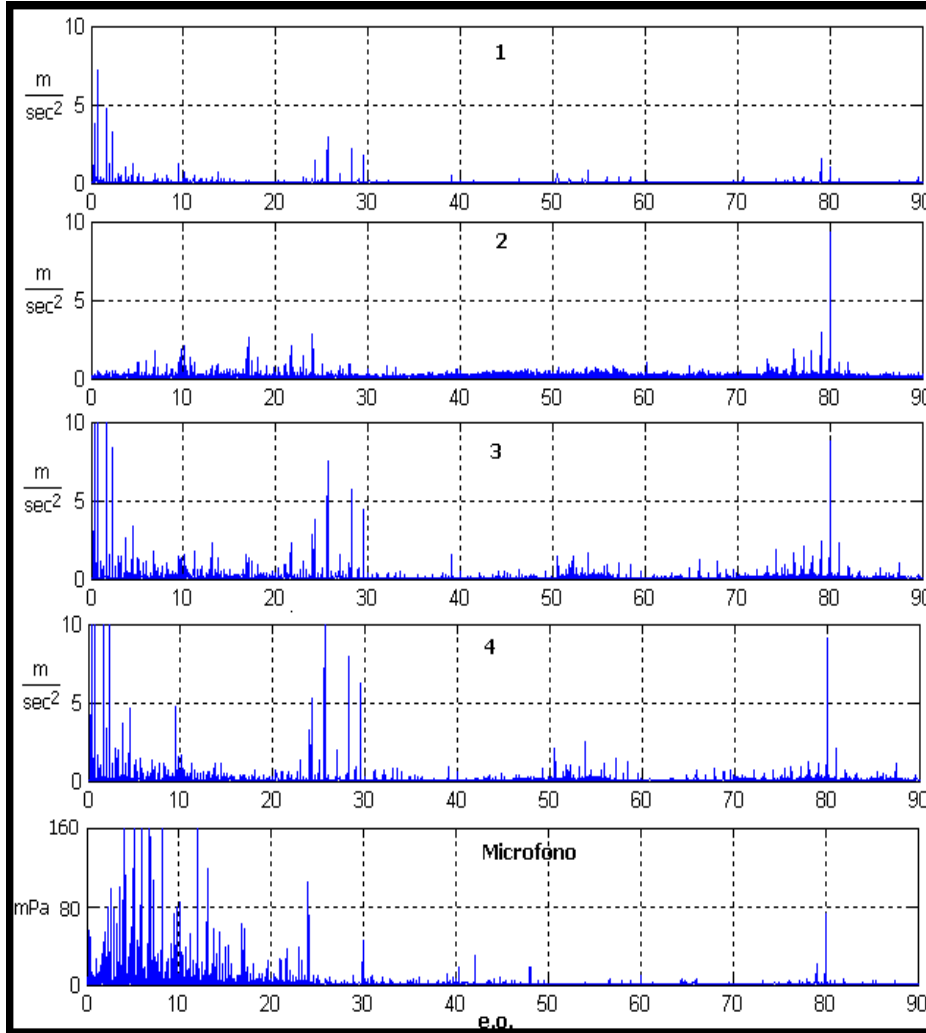


Figura E- 5 500.000 cicli 0-90

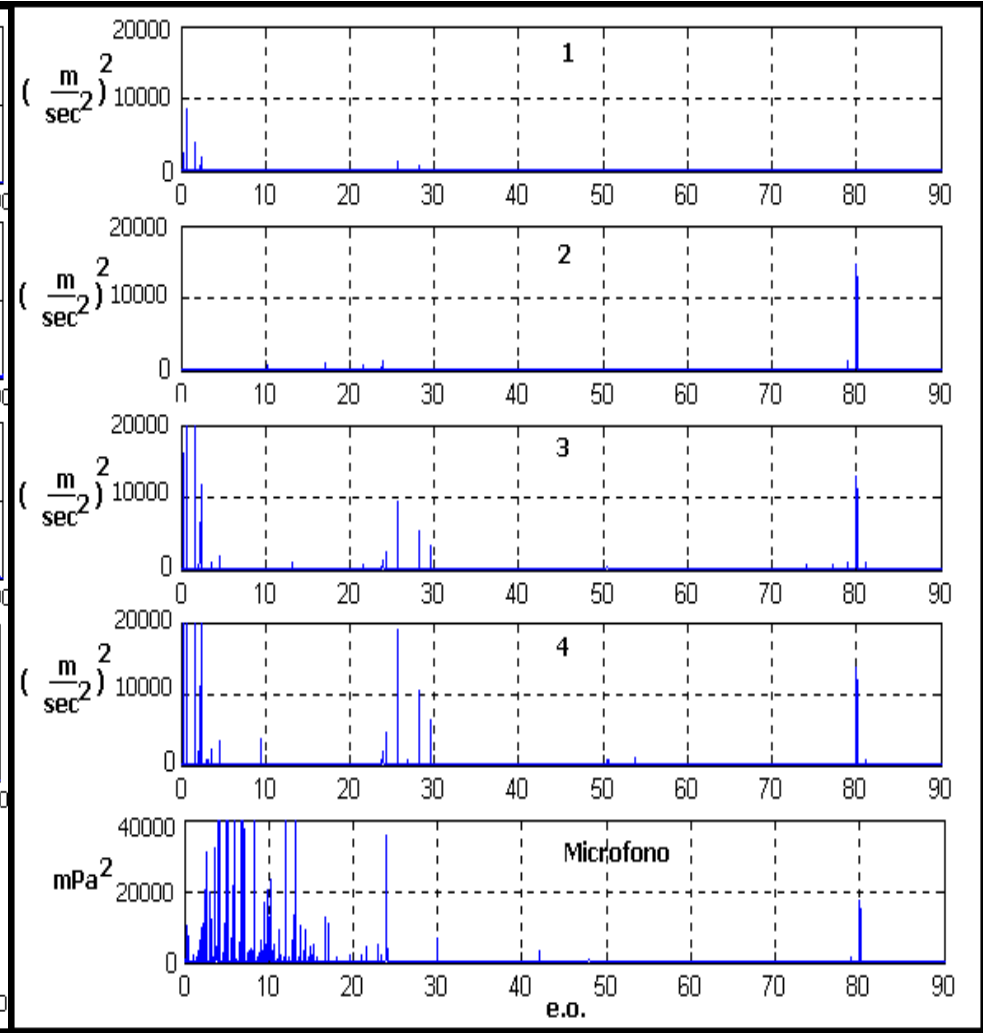


Figura E- 6 500.000 cicli 0-90 PSD

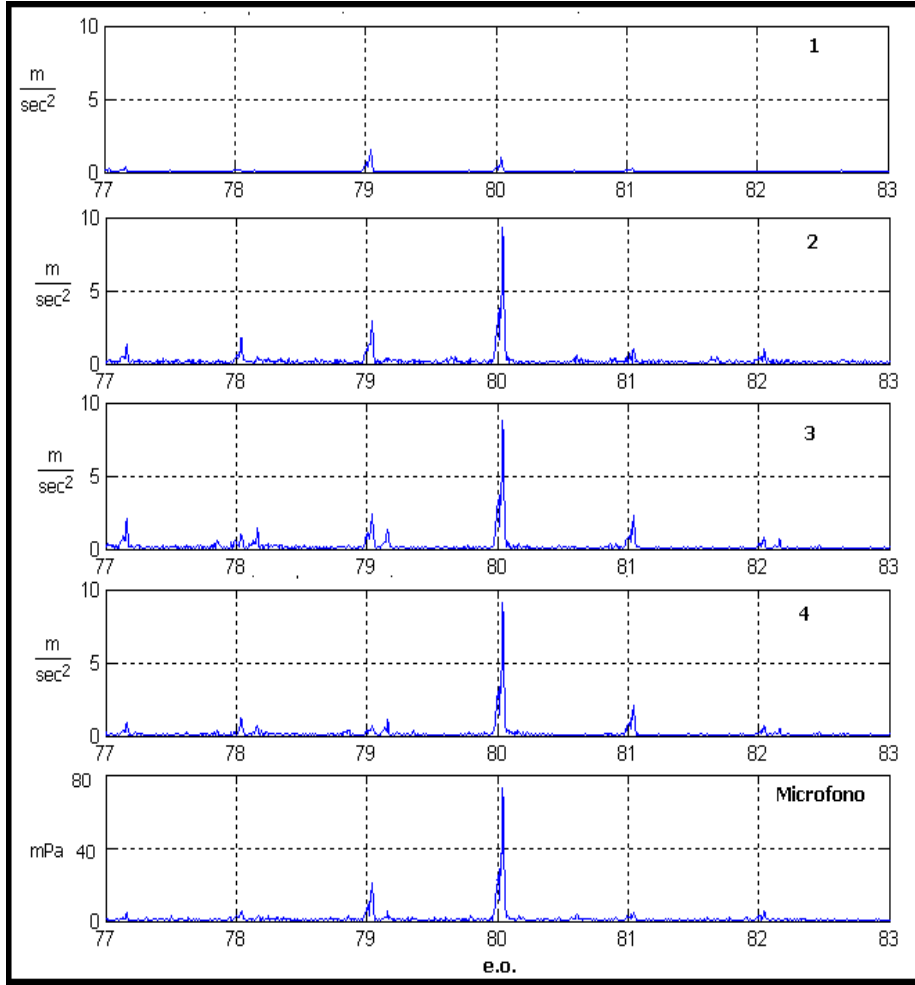


Figura E- 7 500.000 cicli 77-83

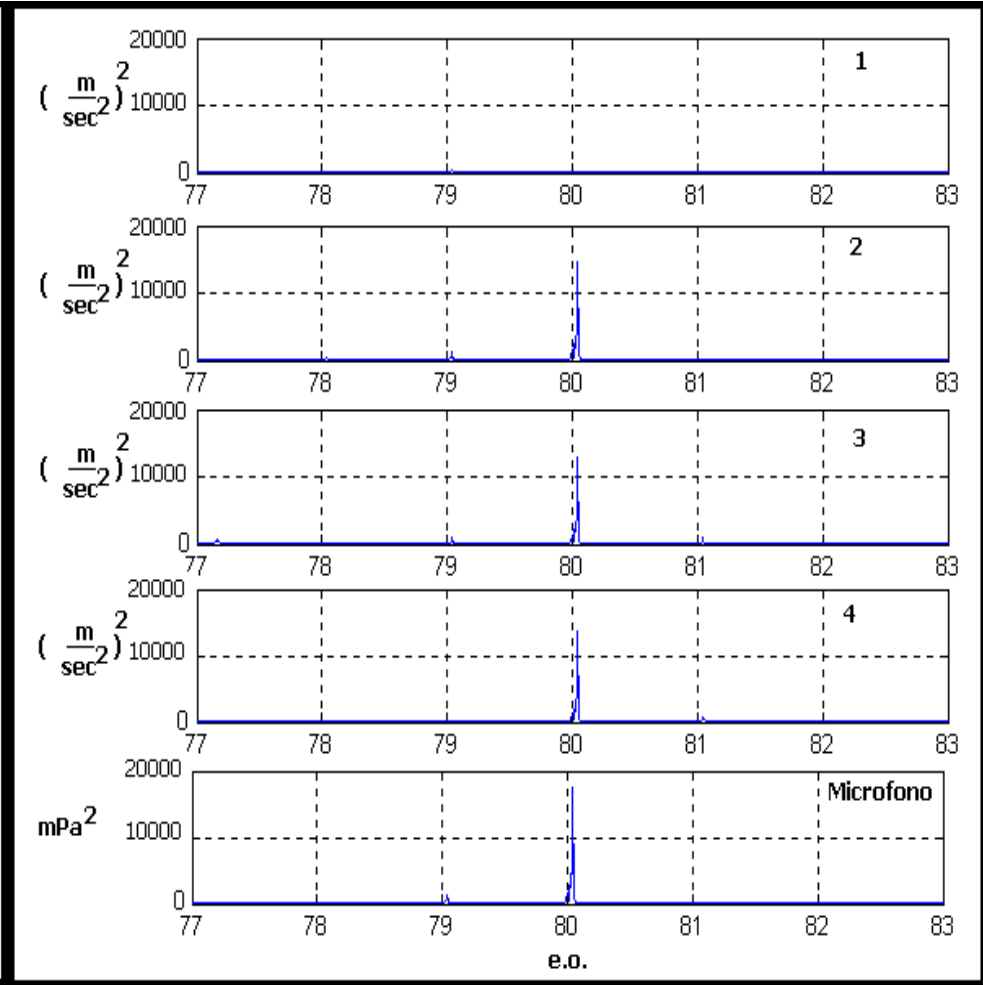


Figura E- 8 500.000 cicli 77-83 PSD

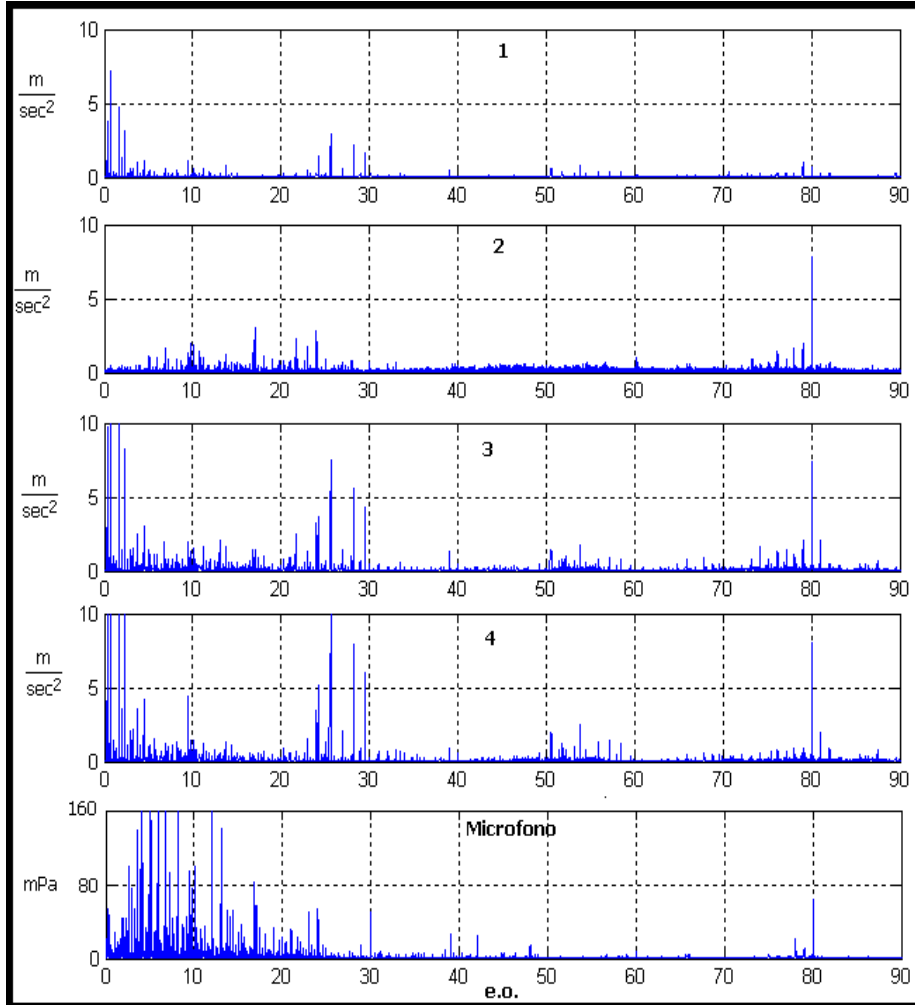


Figura E- 9 1.000.000 cicli 0-90

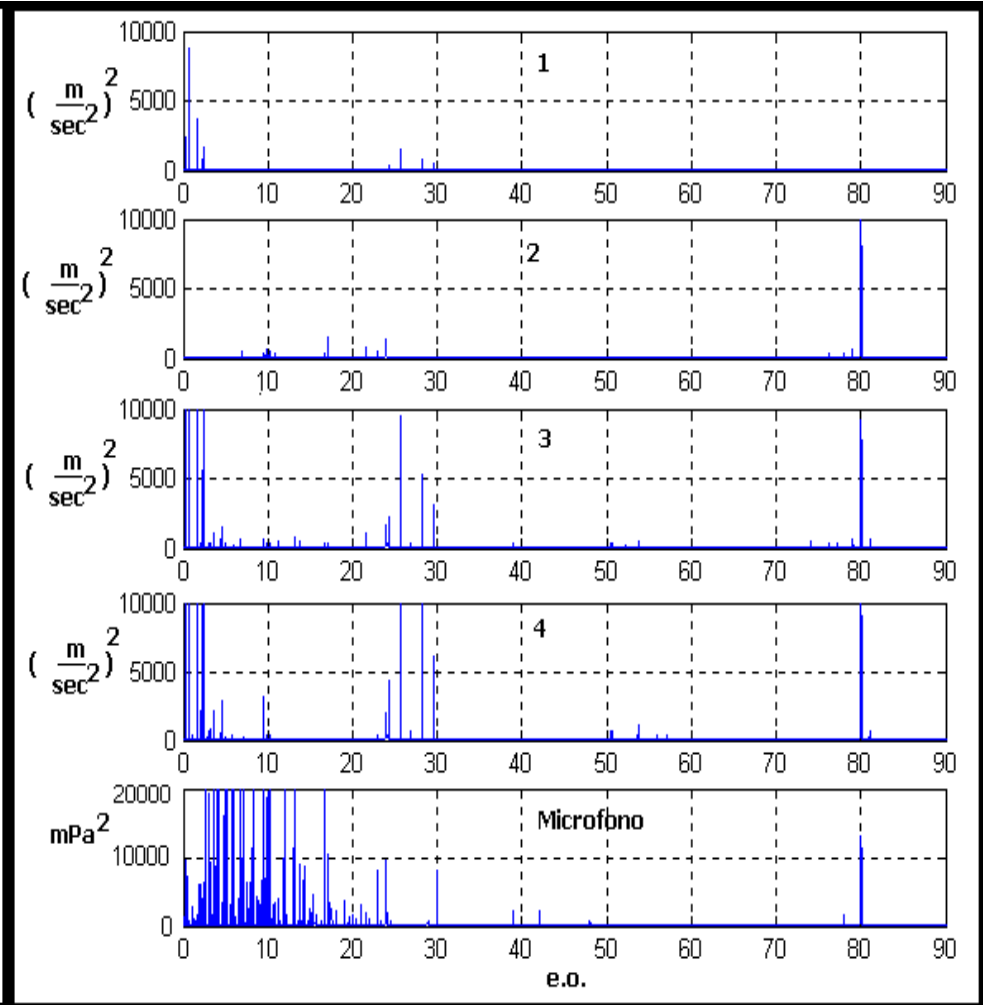


Figura E- 10 1.000.000 cicli 0-90 PSD

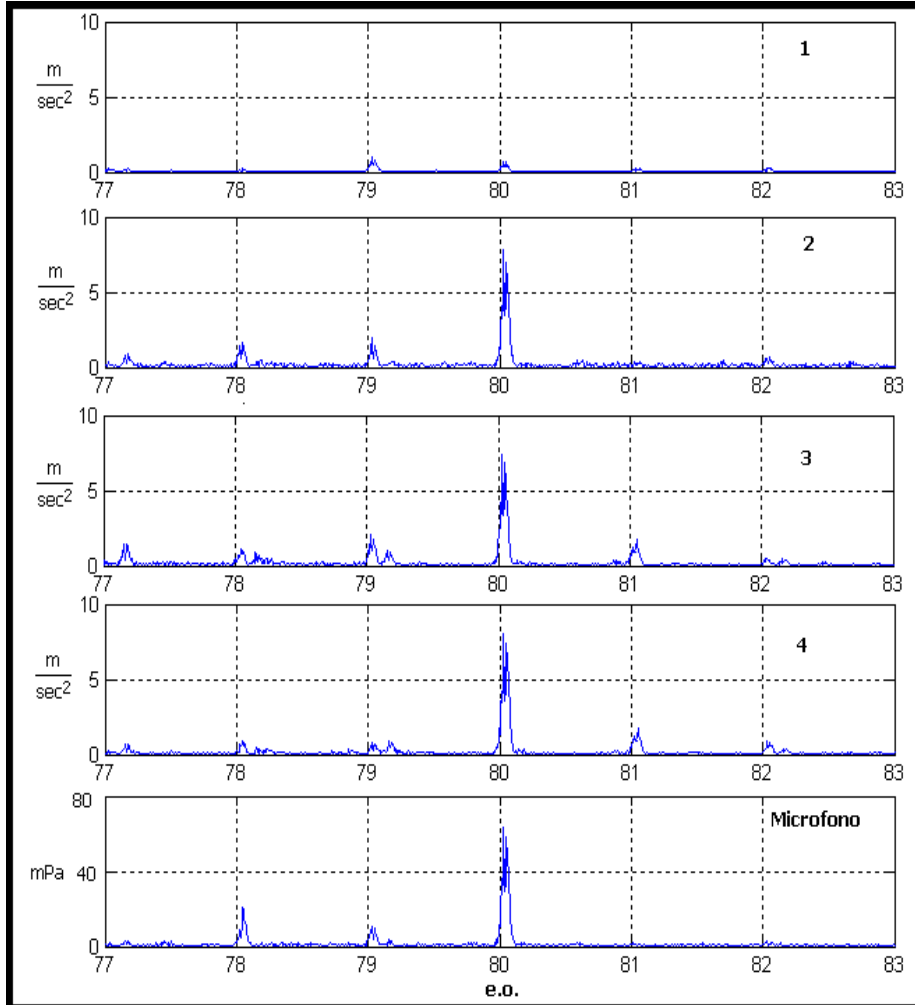


Figura E- 11 1.000.000 cicli 77-83

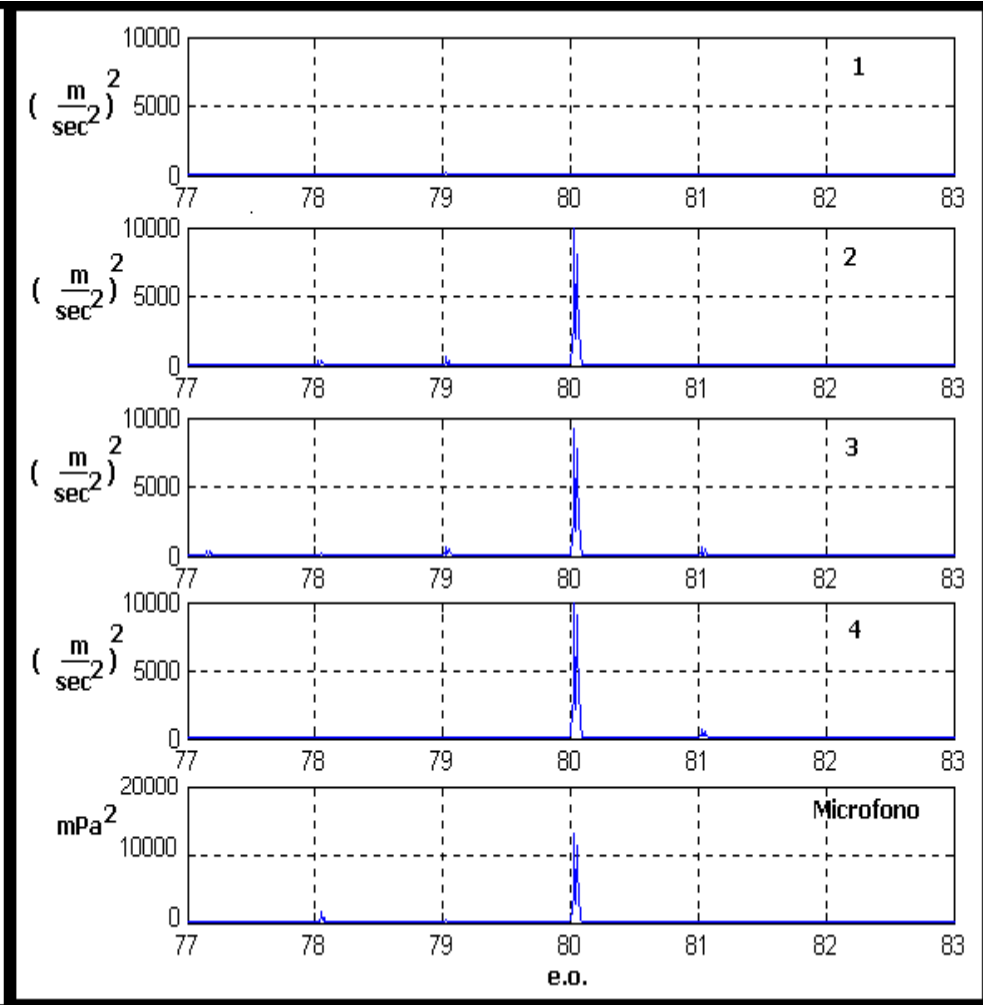


Figura E- 12 1.000.000 cicli 77-83 PSD

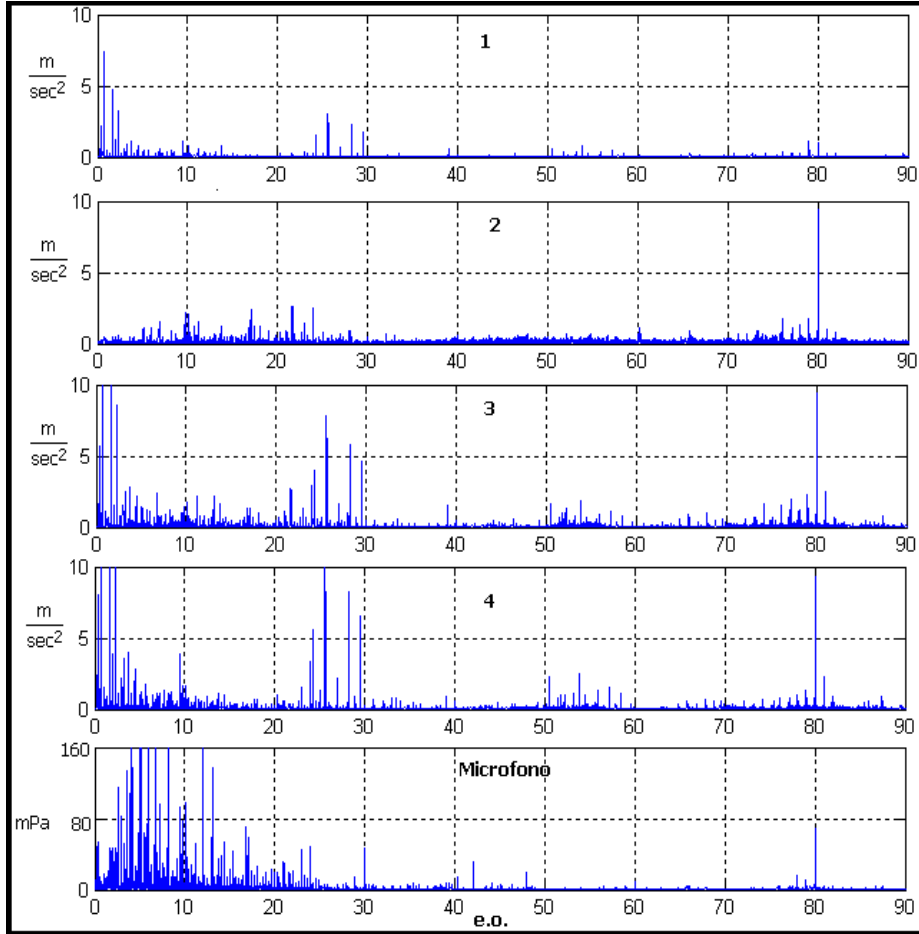


Figura E- 13 1.500.000 cicli 0-90

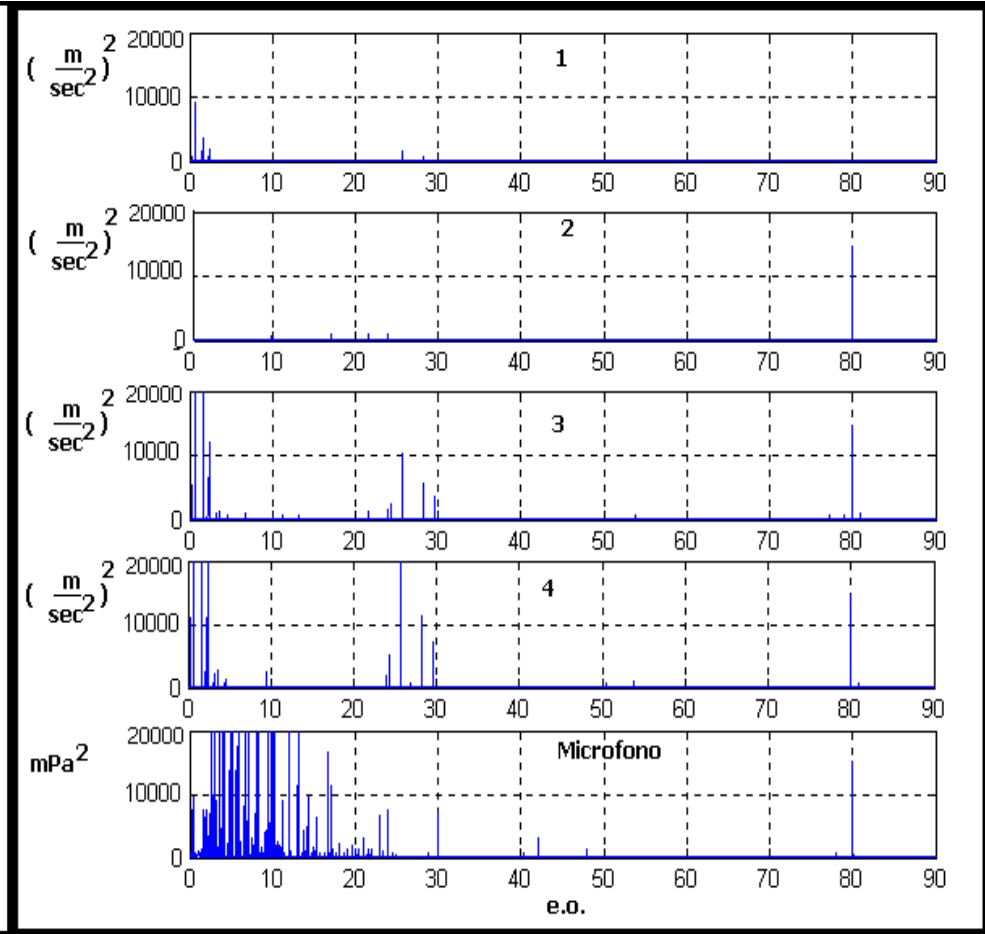


Figura E- 14 1.500.000 cicli 0-90 PSD



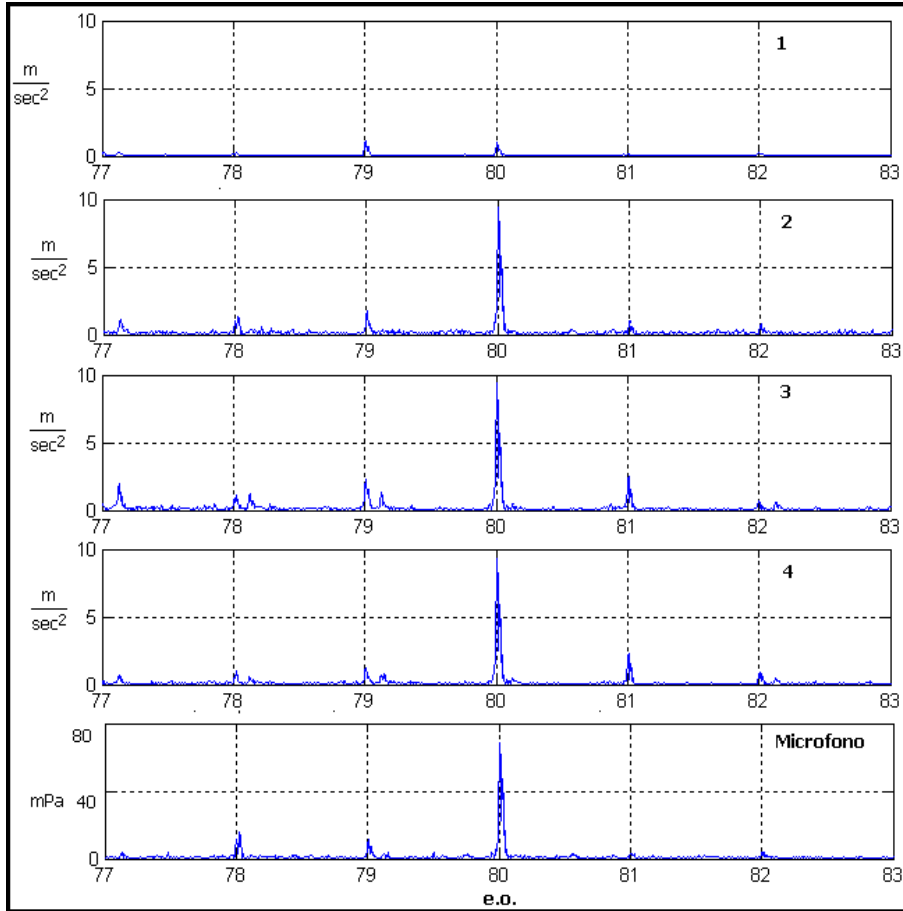


Figura E- 15 1.500.000 cicli 77-83

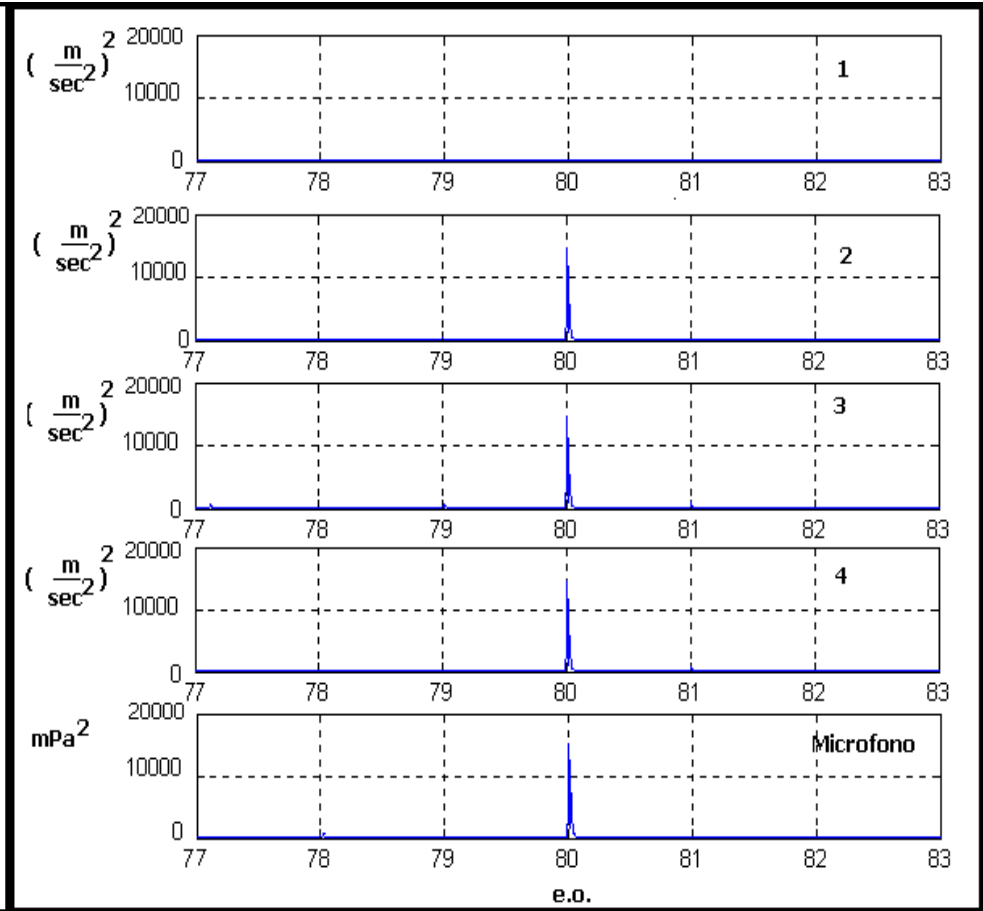


Figura E- 16 1.500.000 cicli 77-83 PSD

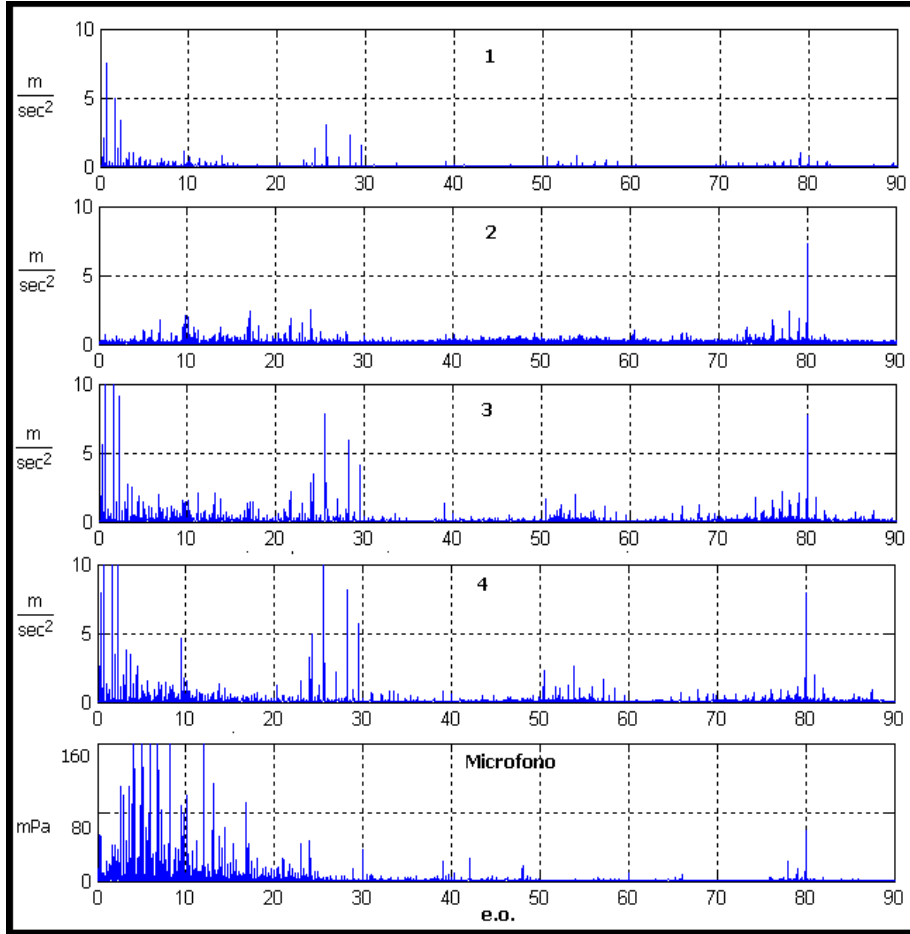


Figura E- 17 2.000.000 cicli 0-90 FFT

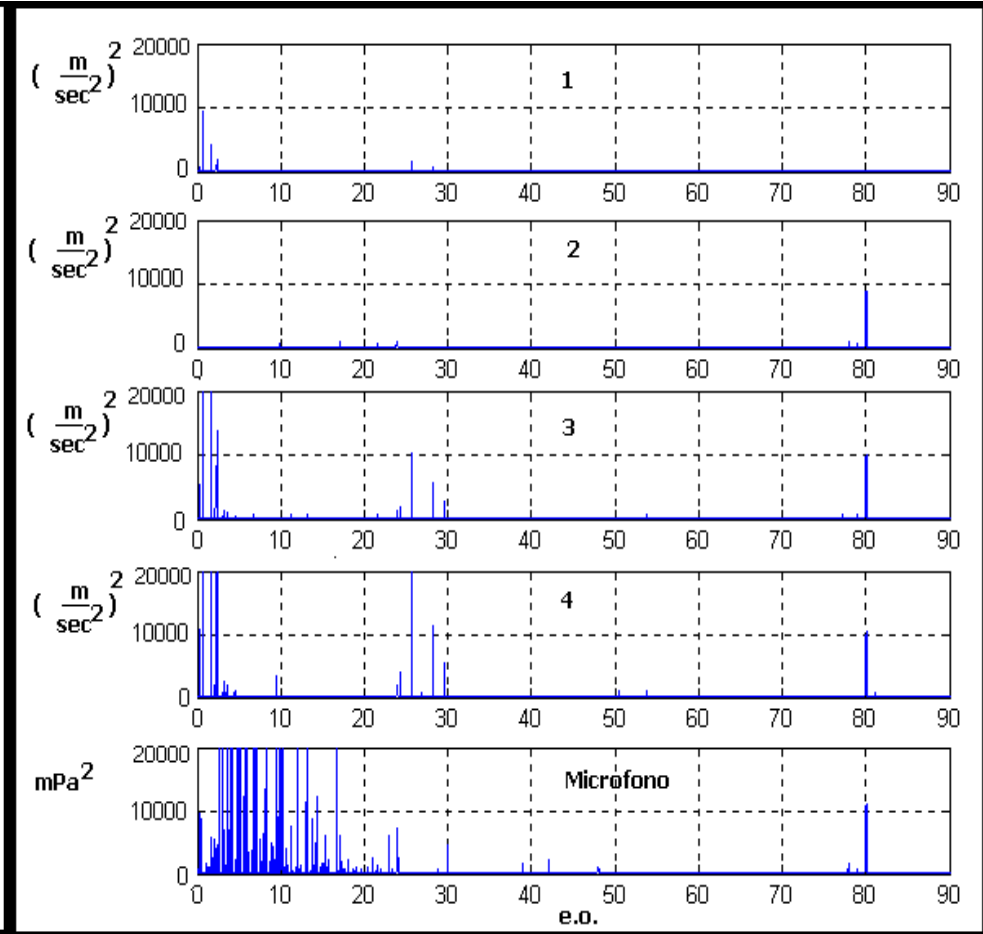


Figura E- 18 2.000.000 cicli 0-90 FFT

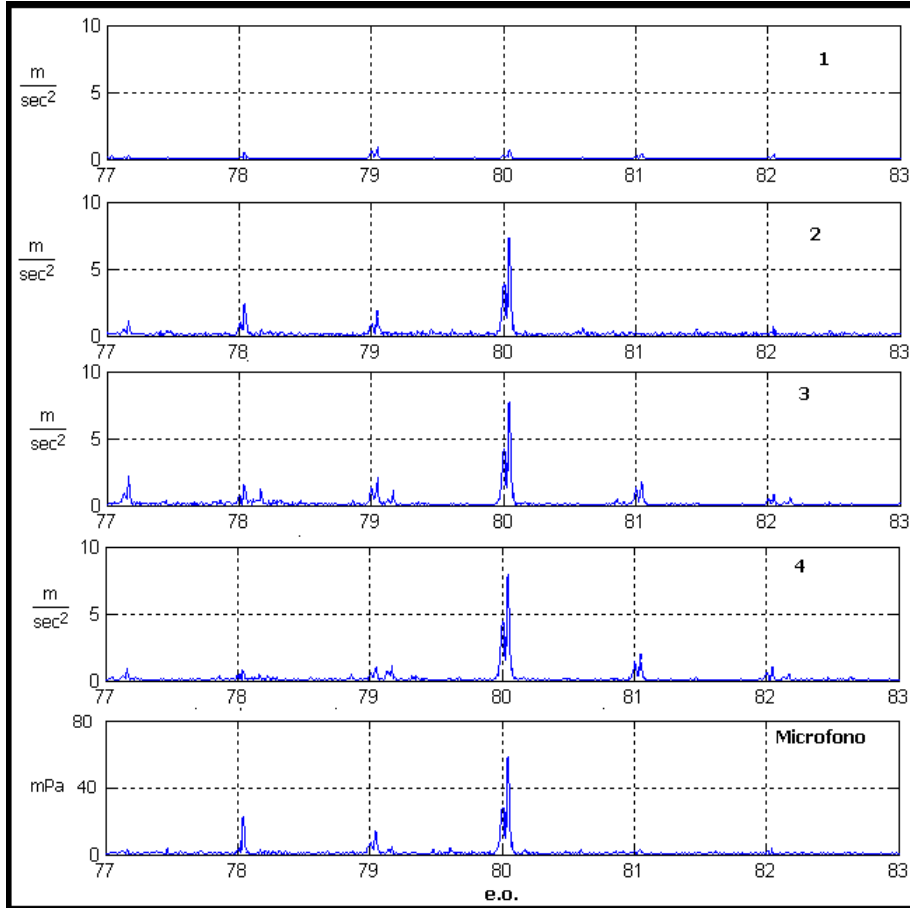


Figura E- 19 2.000.000 cicli 77-83

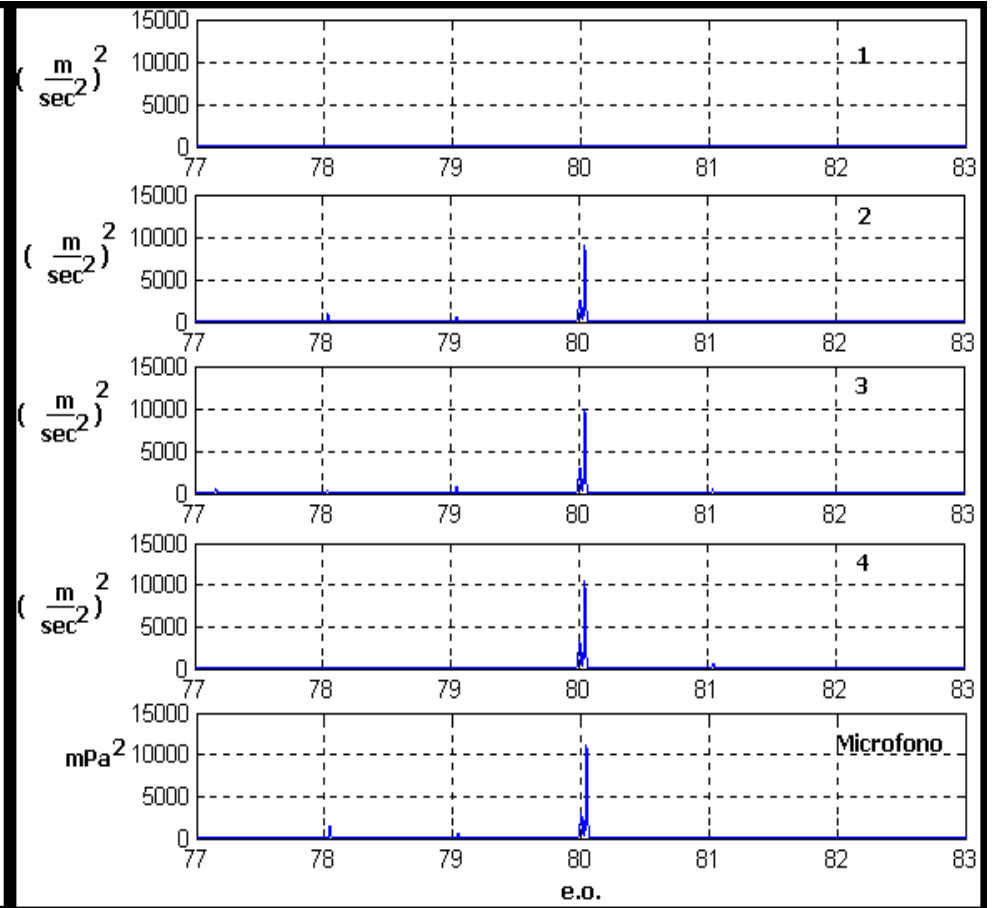


Figura E- 20 2.000.000 cicli 77-83 PSD

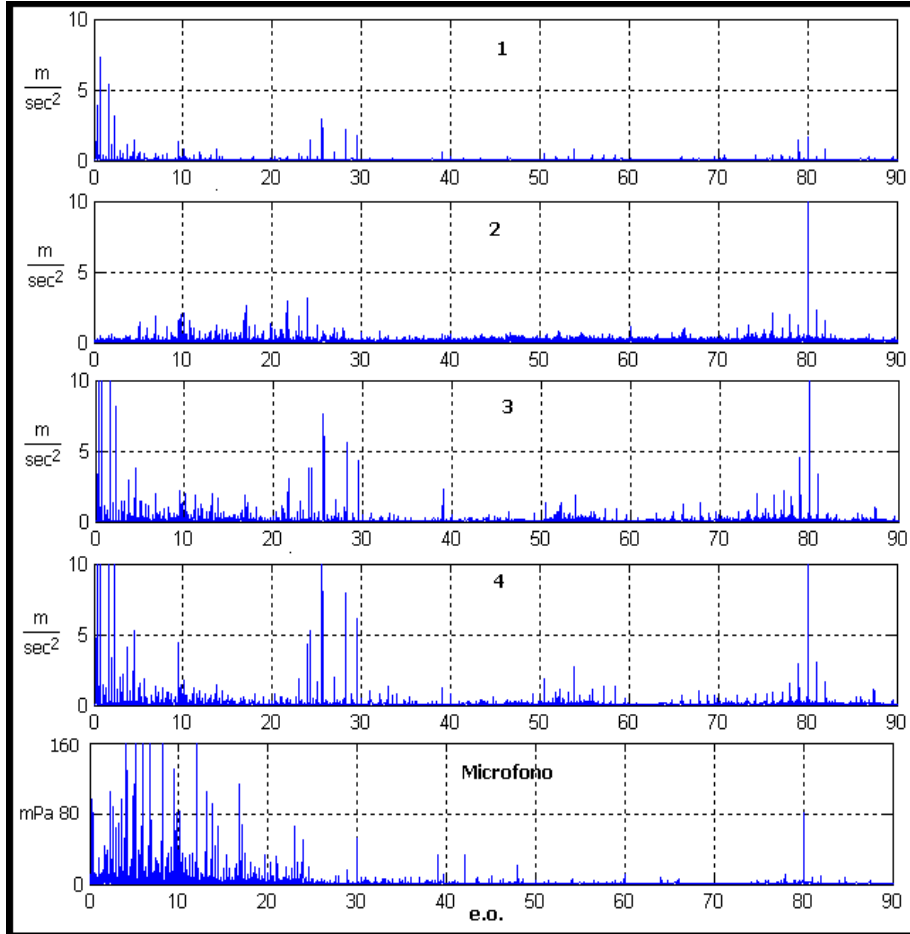


Figura E- 21 2.500.000 cicli 0-90

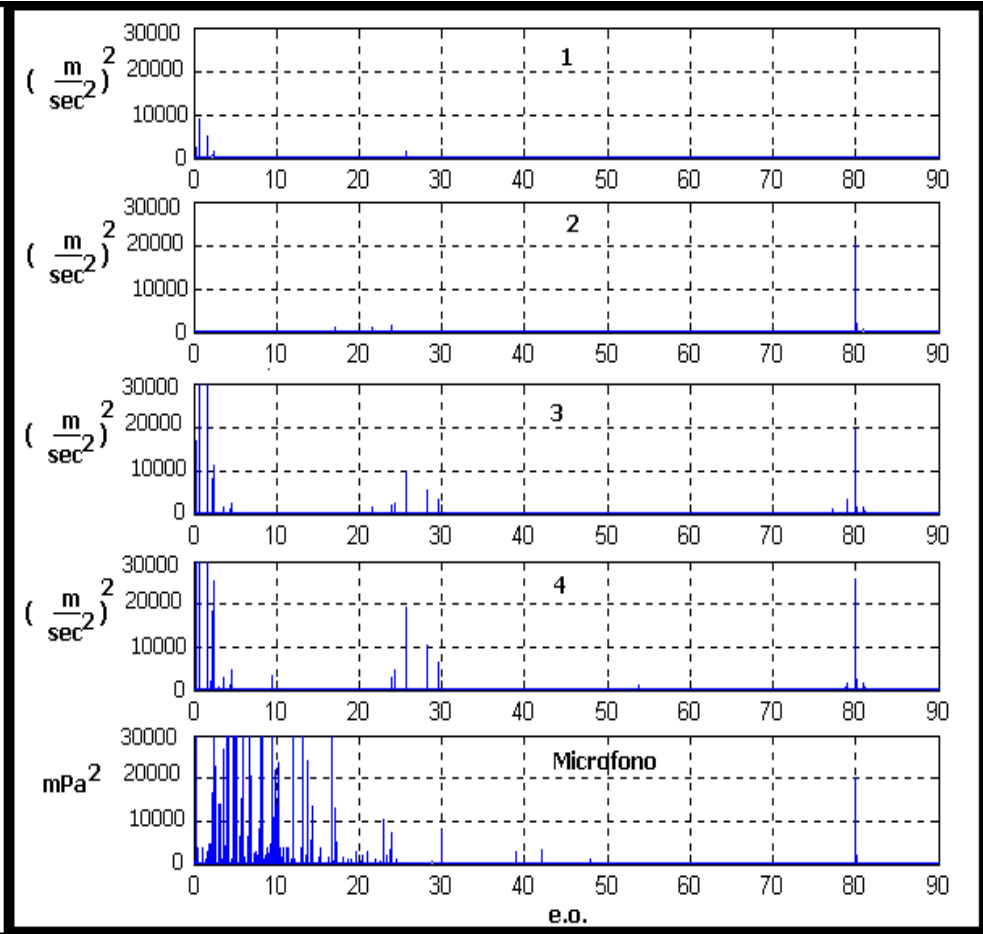


Figura E- 22 2.500.000 cicli 0-90 PSD

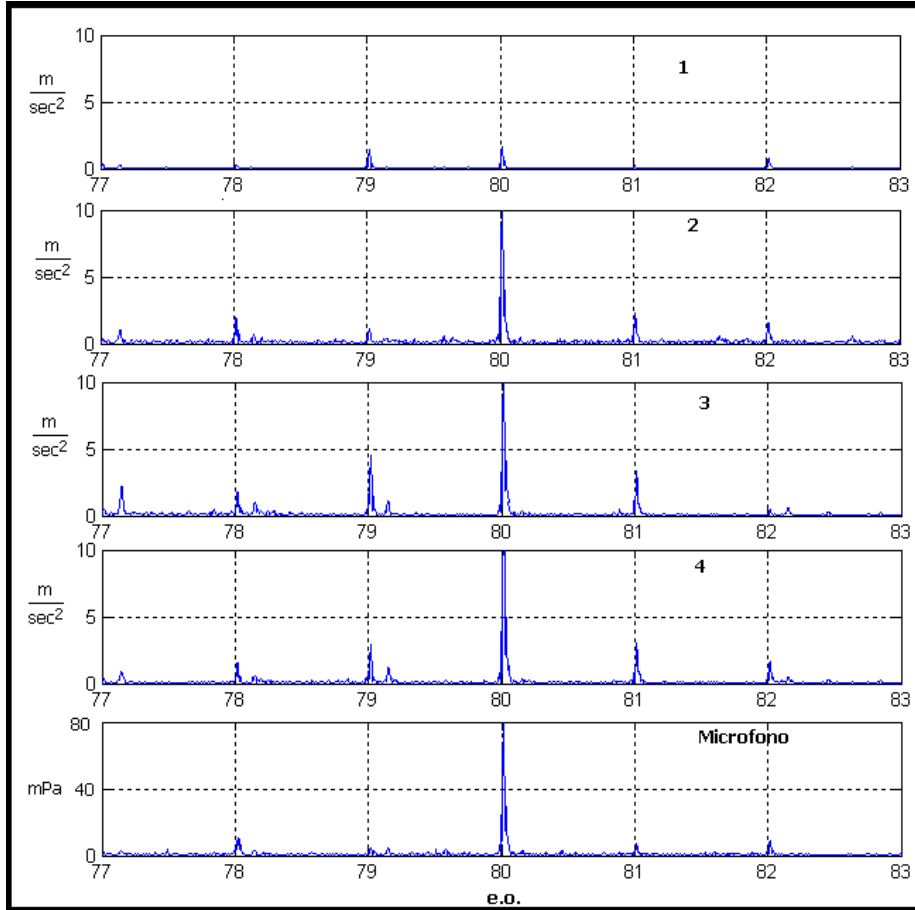


Figura E- 23 2.500.000 cicli 77-83

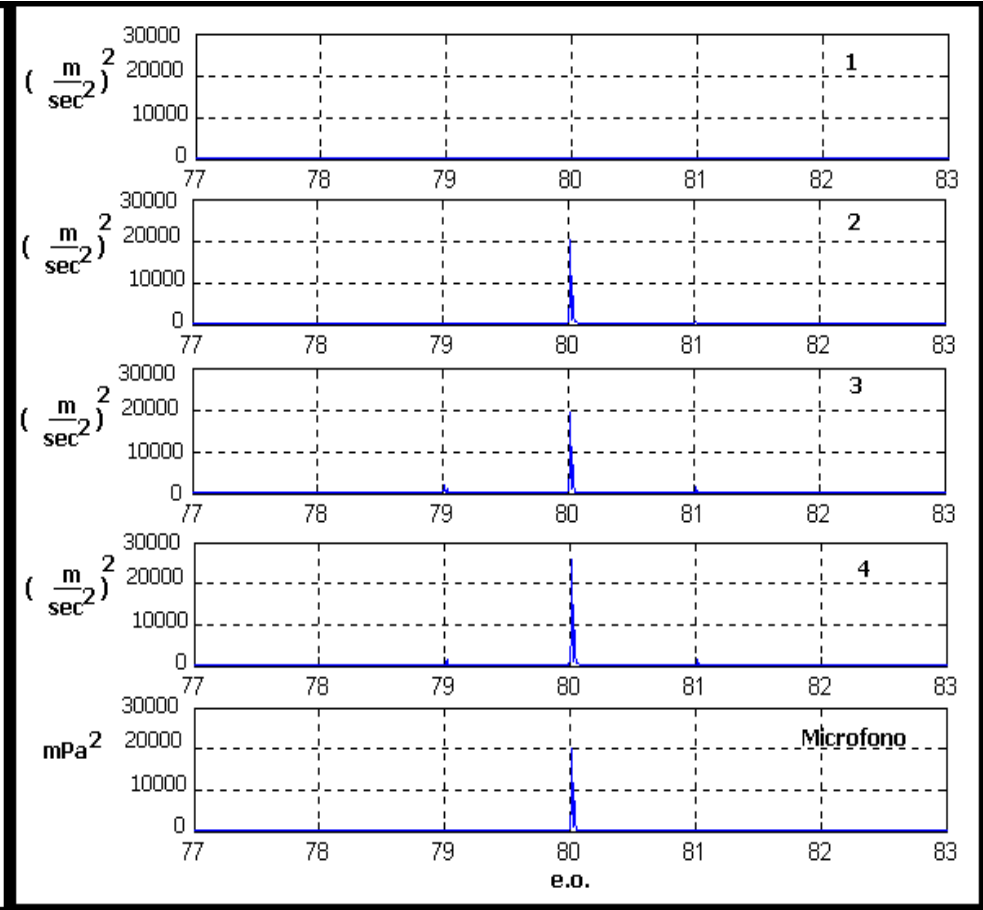


Figura E- 24 2.500.000 cicli 77-83 PSD

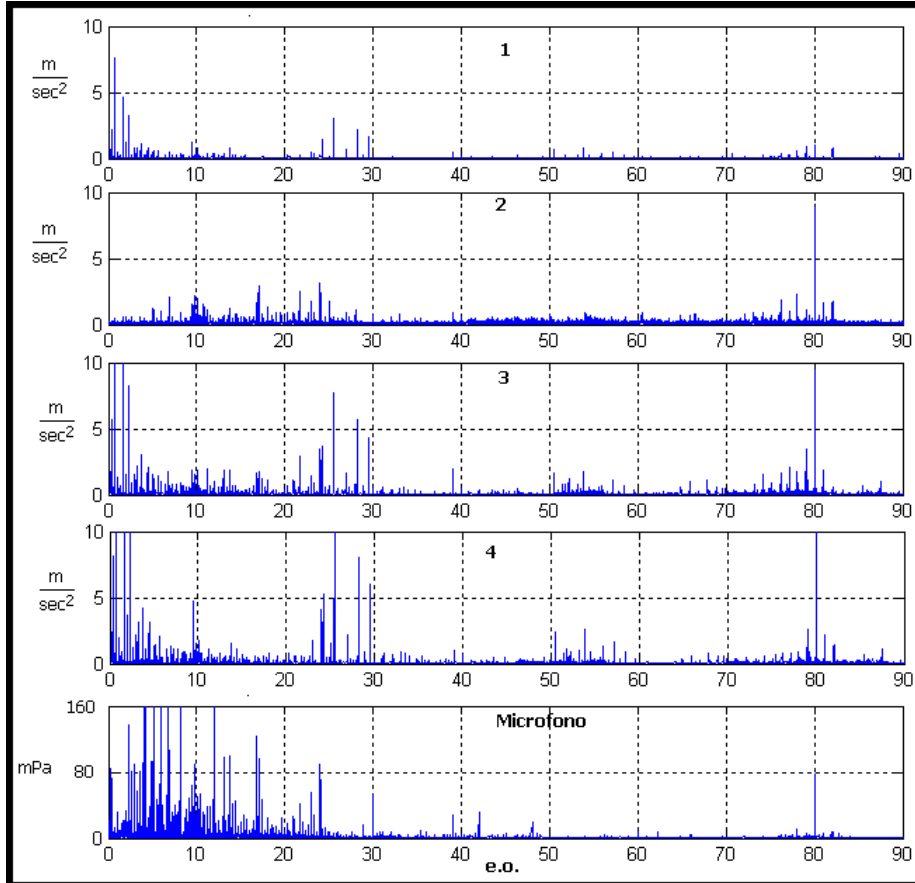


Figura E- 25 3.000.000 cicli 0-90

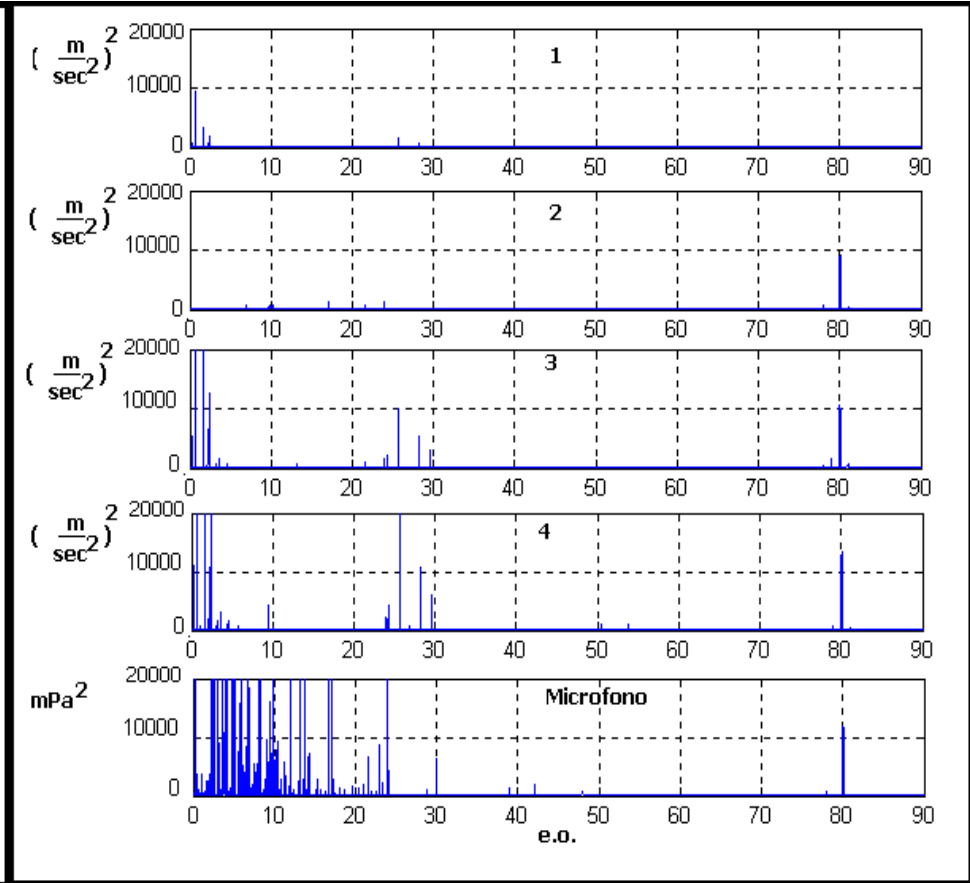


Figura E- 26 3.000.000 cicli 0-90 PSD

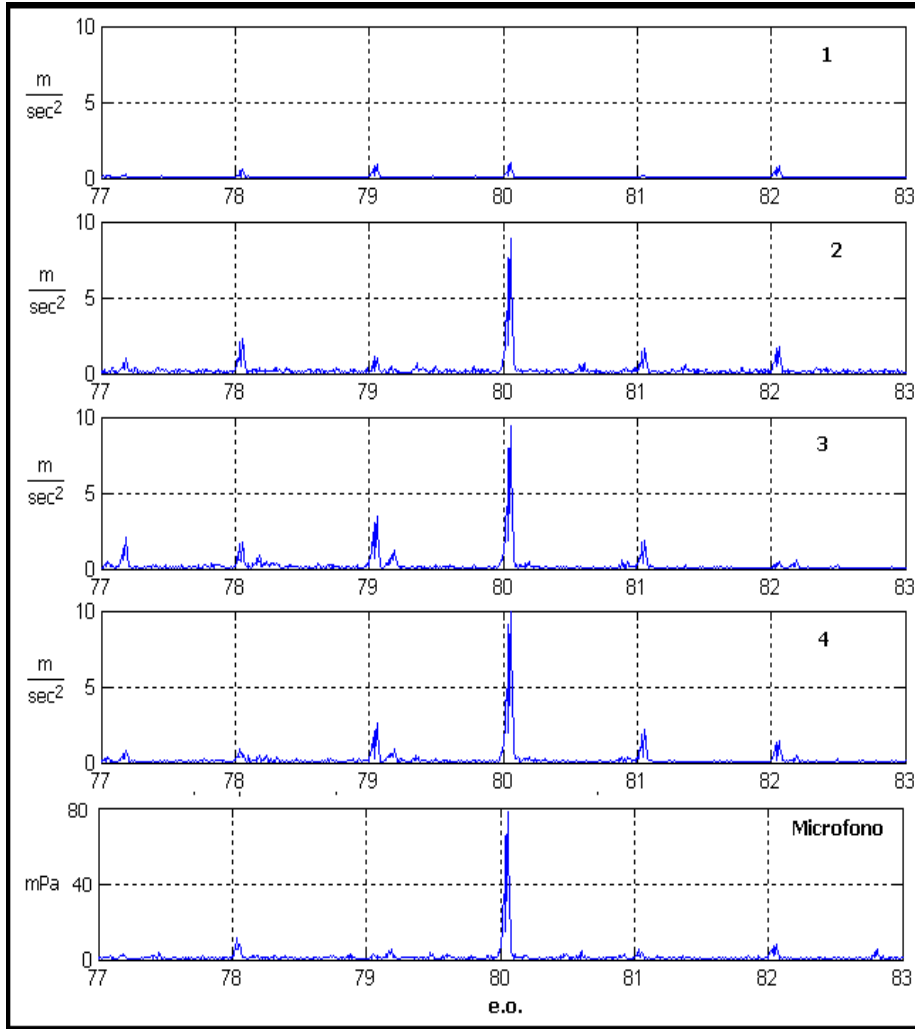


Figura E- 27 3.000.000 cicli 77-83

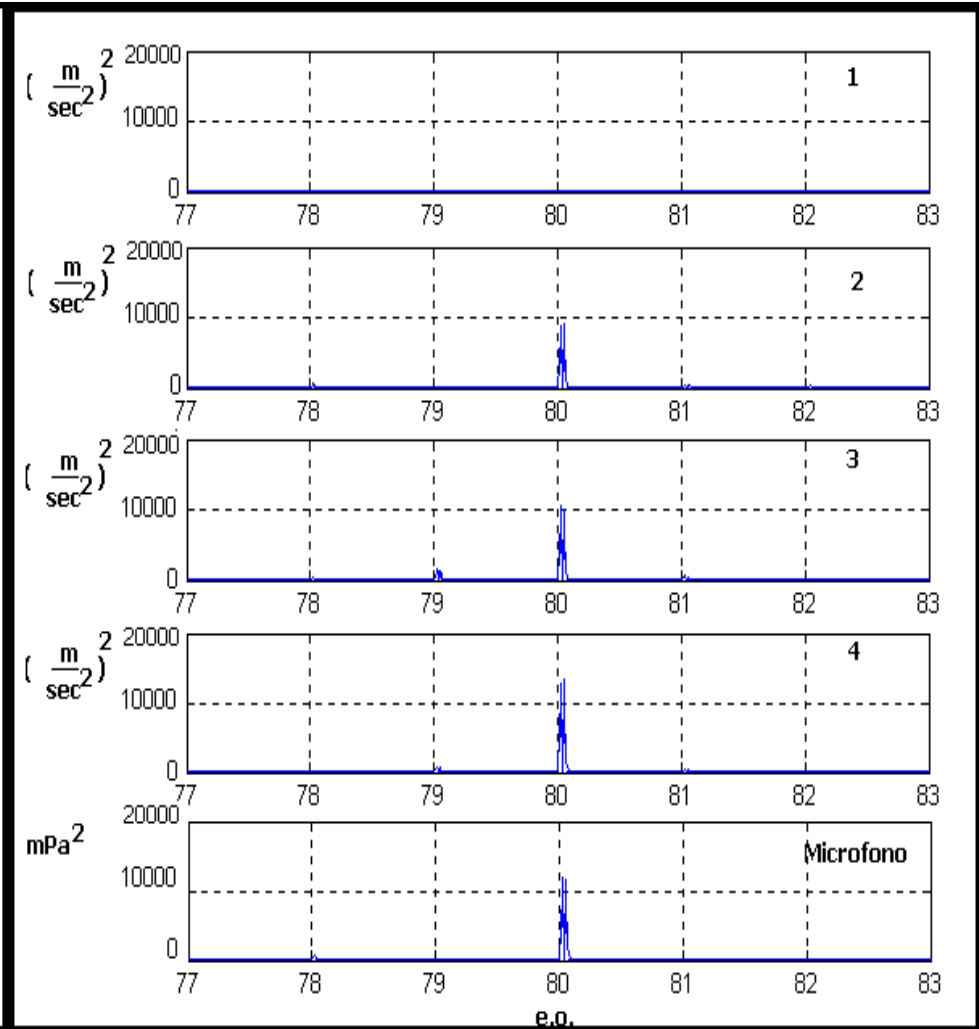


Figura E- 28 3.000.000 cicli 77-83 PSD

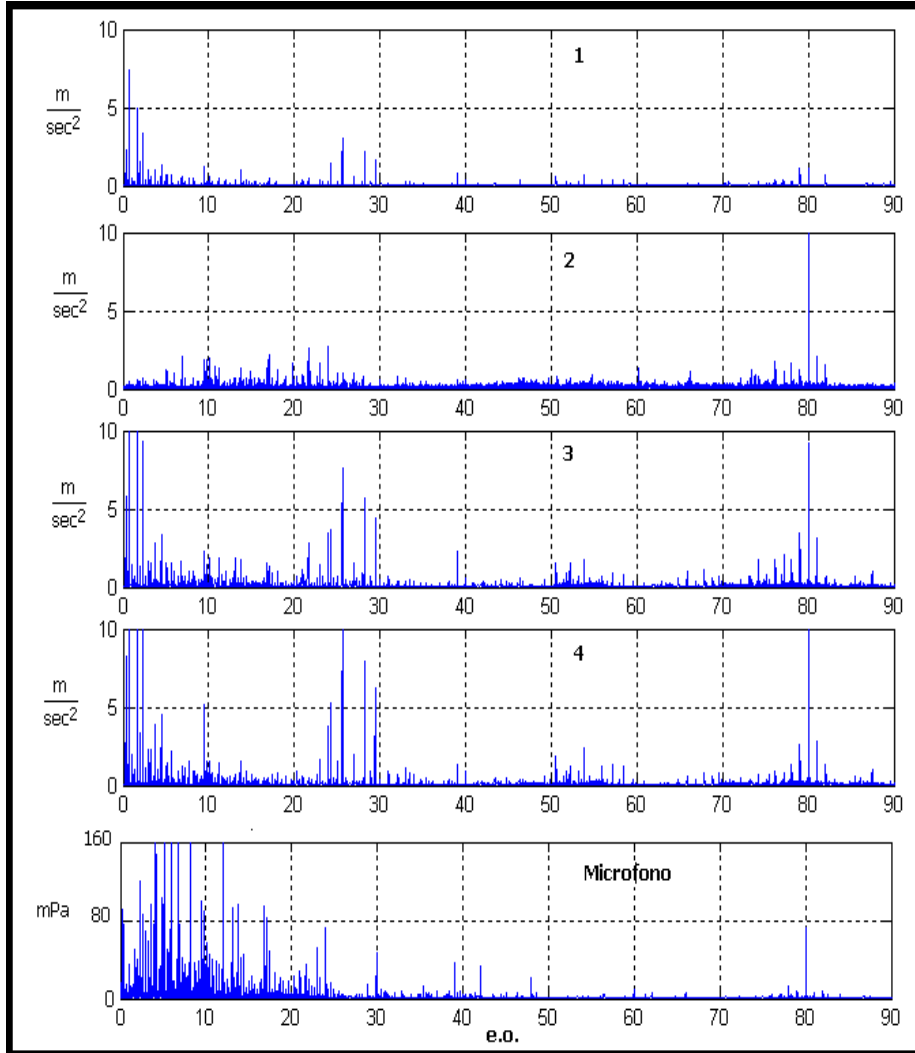


Figura E- 29 3.080.000 cicli 0-90

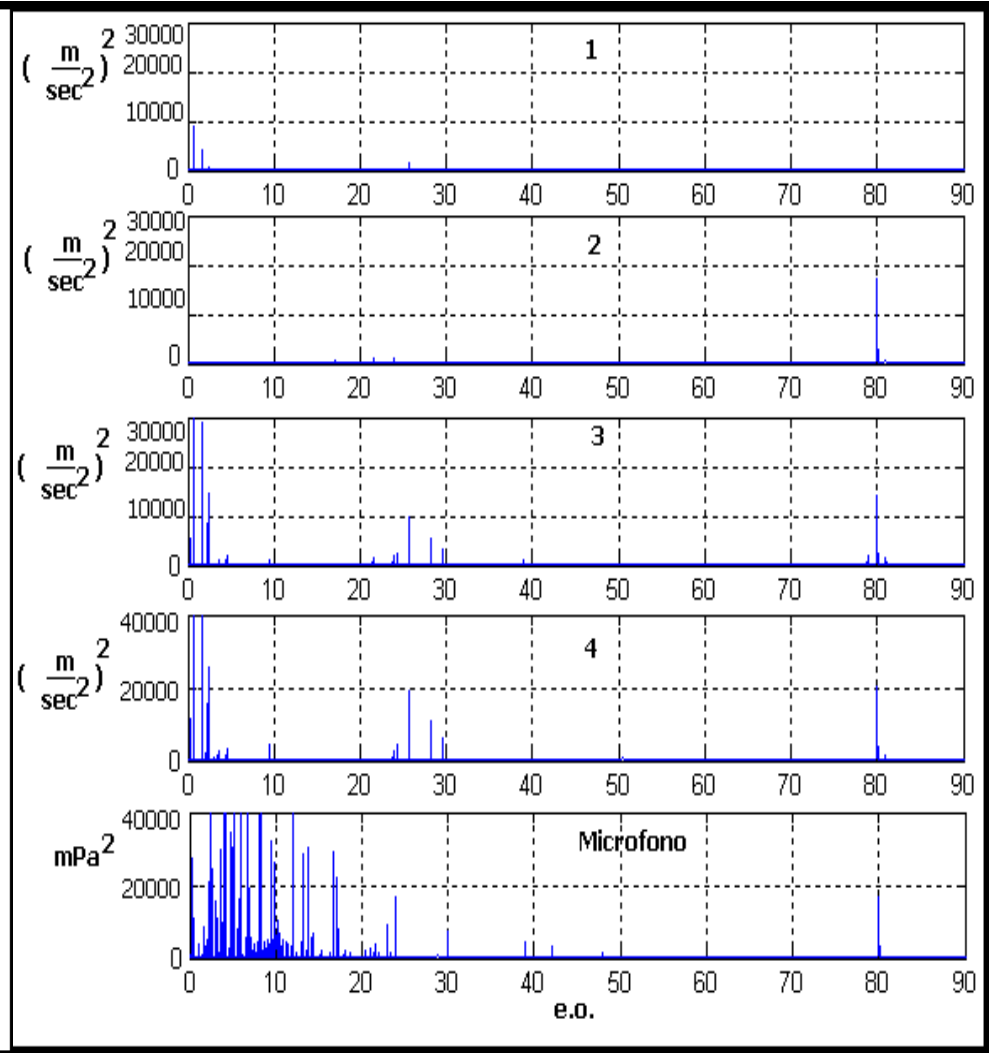


Figura E- 30 3.080.000 cicli 0-90 PSD



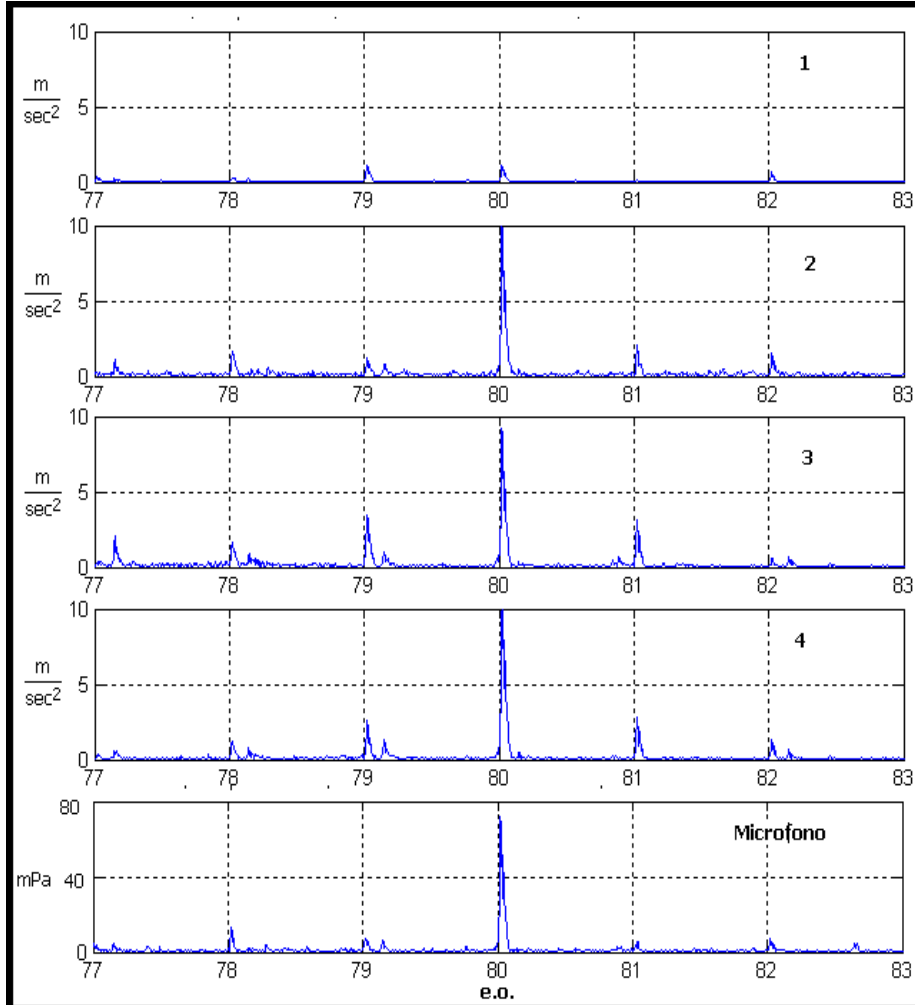


Figura E- 31 3.080.000 cicli 77-83

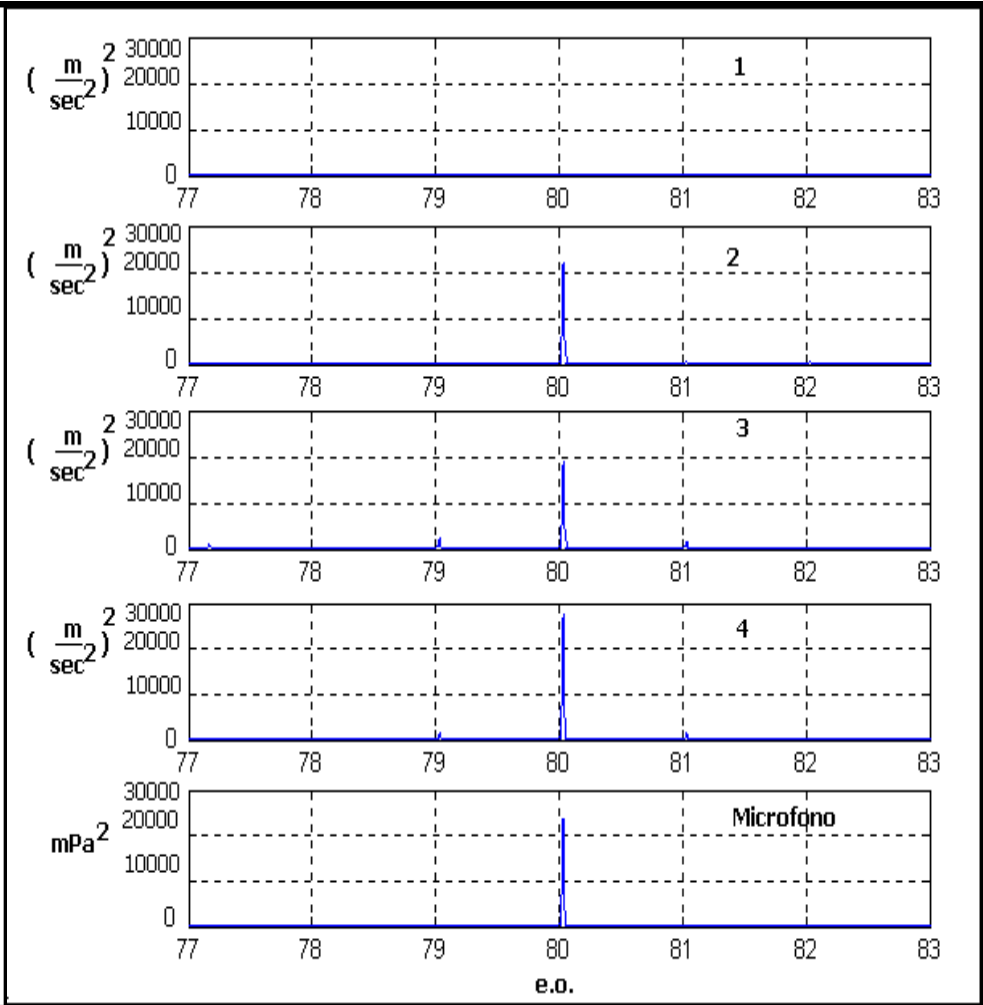


Figura E- 32 3.080.000 cicli 77-83 PSD

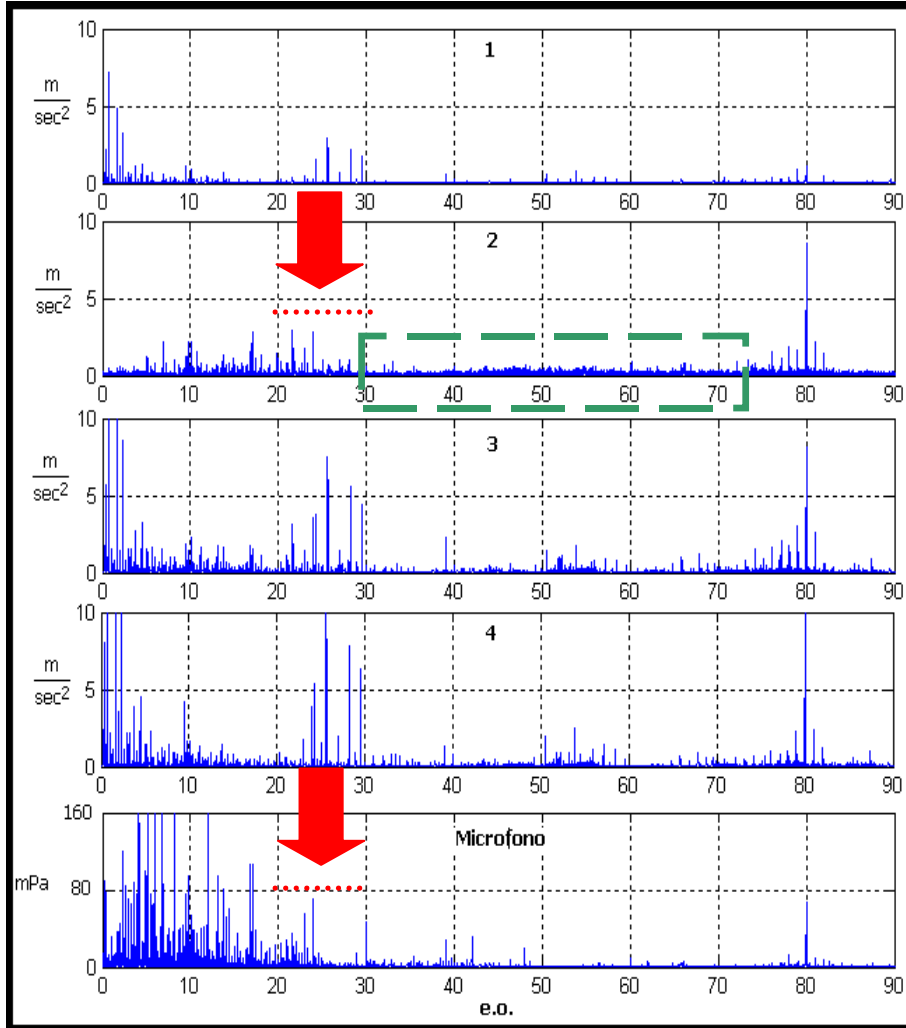


Figura E- 33 3.160.000 cicli 0-90

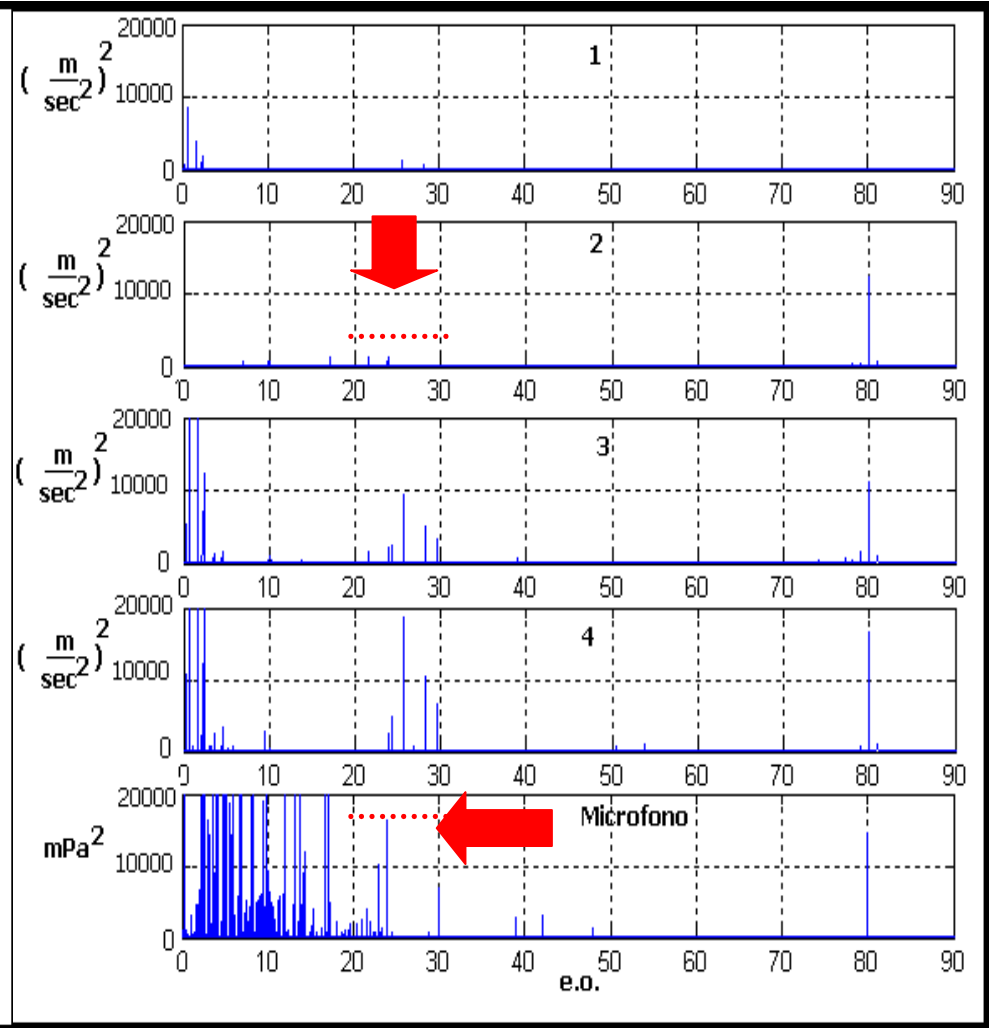


Figura E- 34 3.160.000 cicli 0-90 PSD

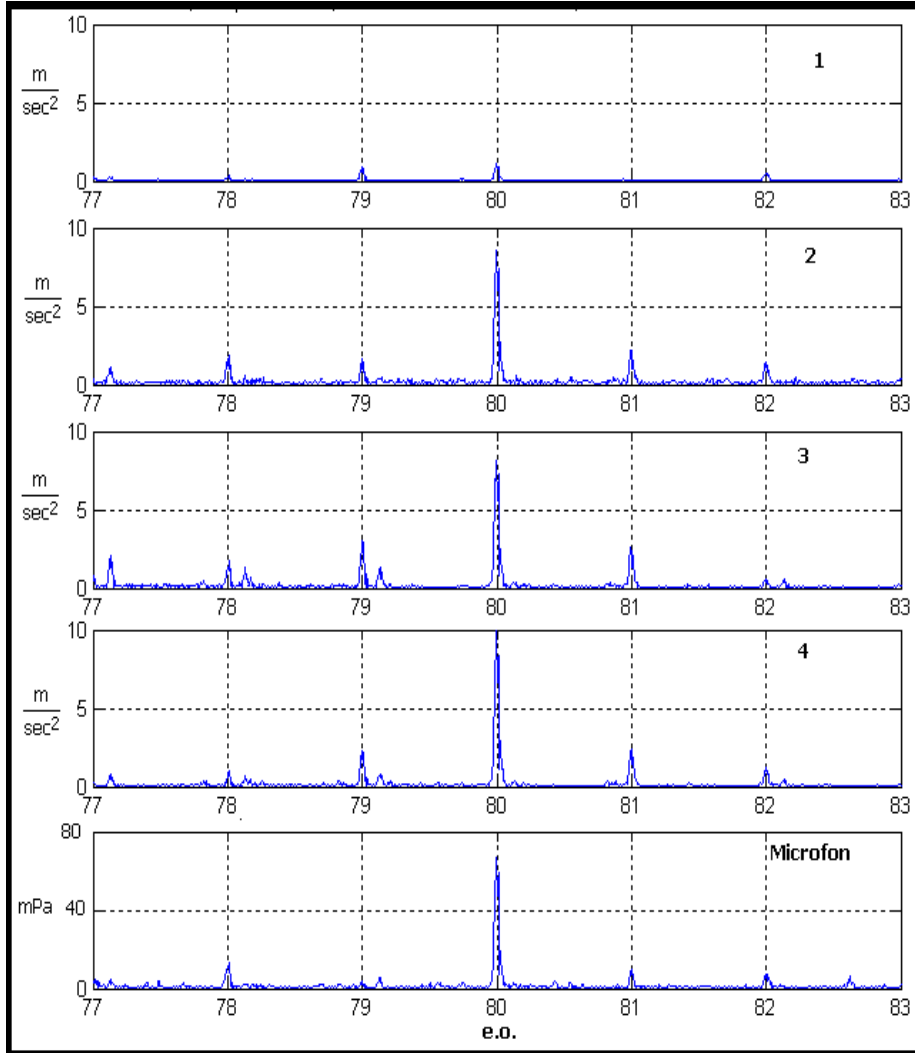


Figura E- 35 3.160.000 cicli 77-83

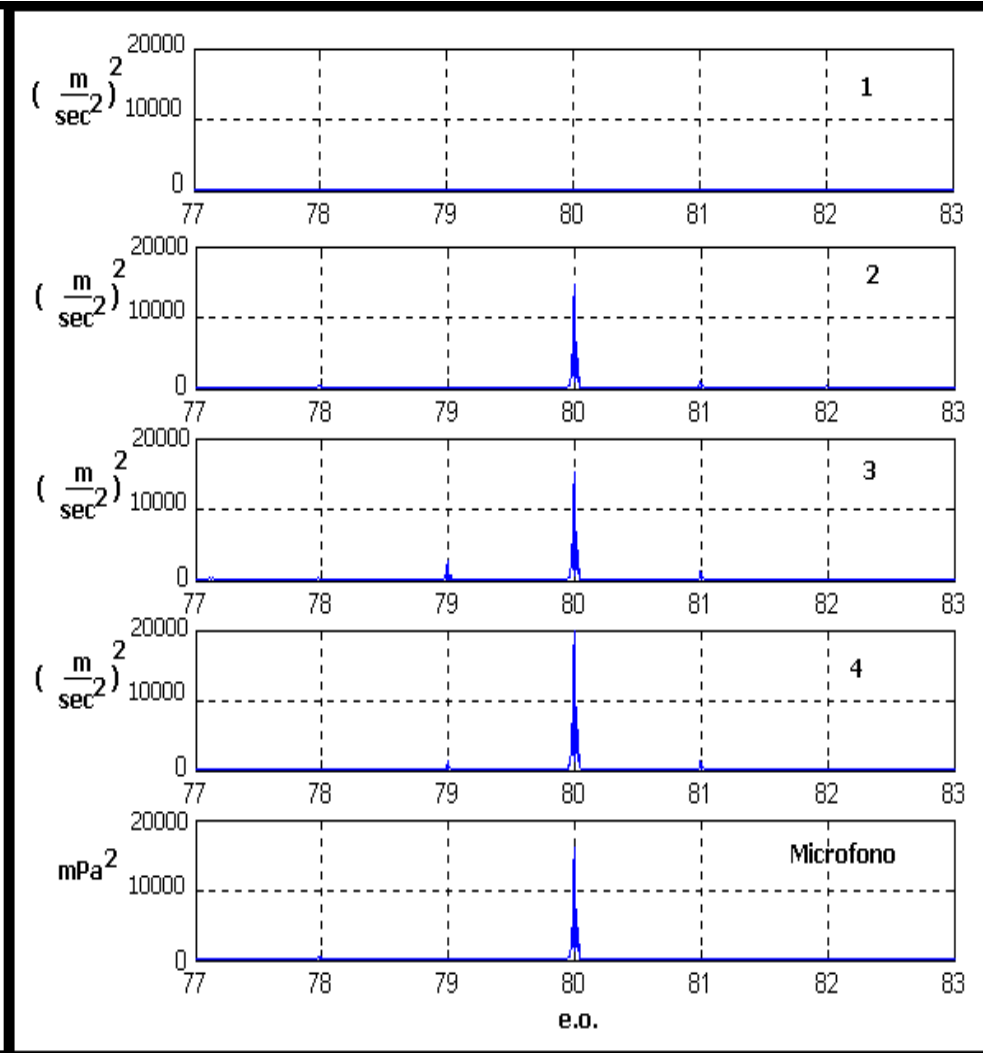


Figura E- 36 3.160.000 cicli 77-83 PSD

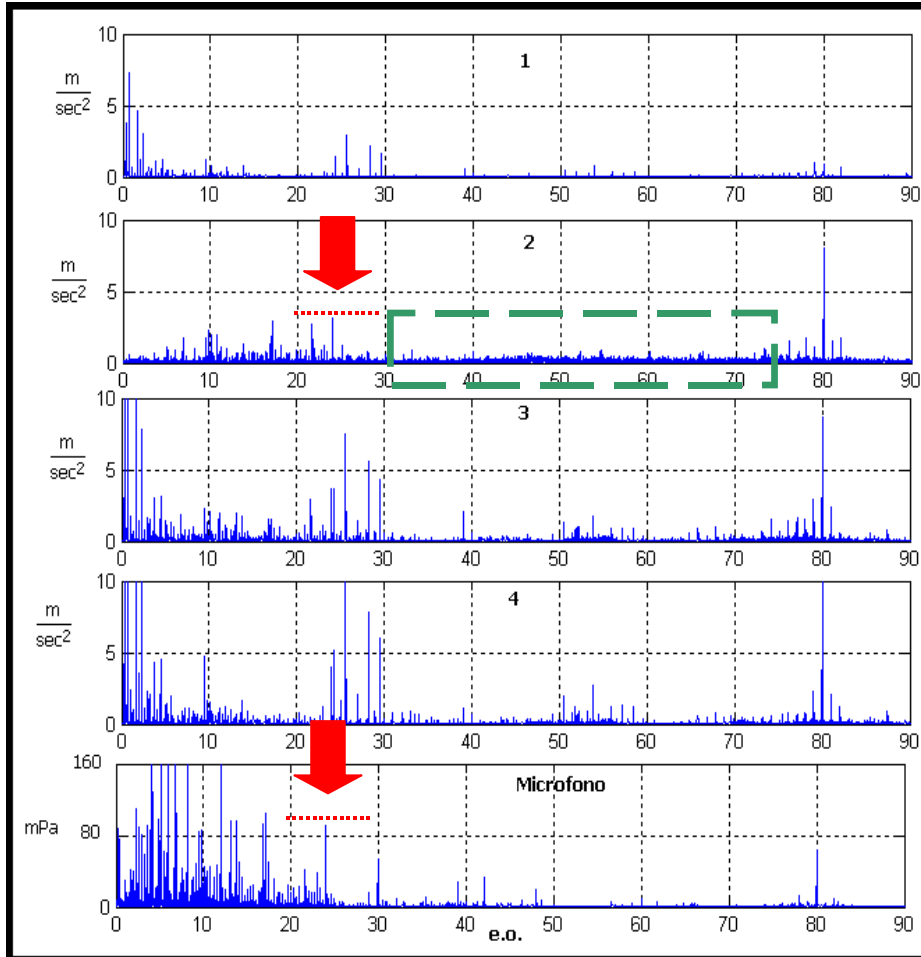


Figura E- 37 3.240.000 cicli 0-90

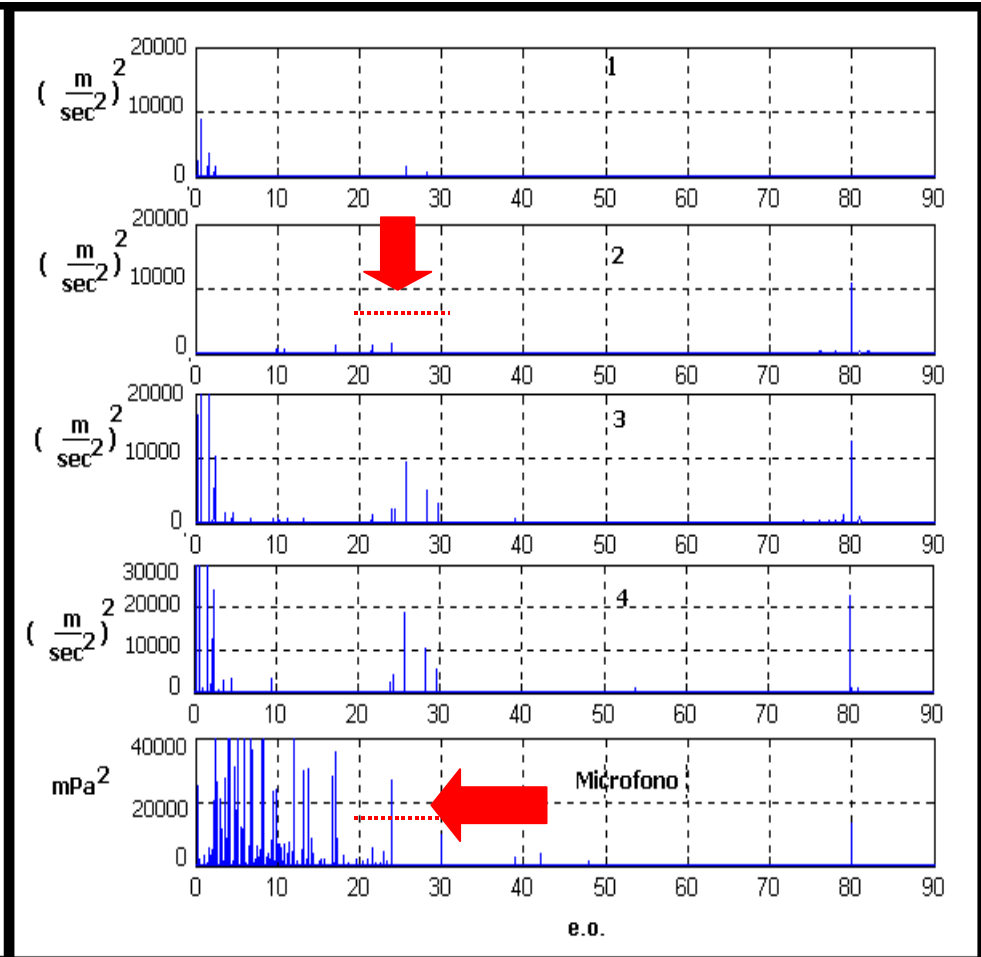


Figura E- 38 3.240.000 cicli 0-90 PSD

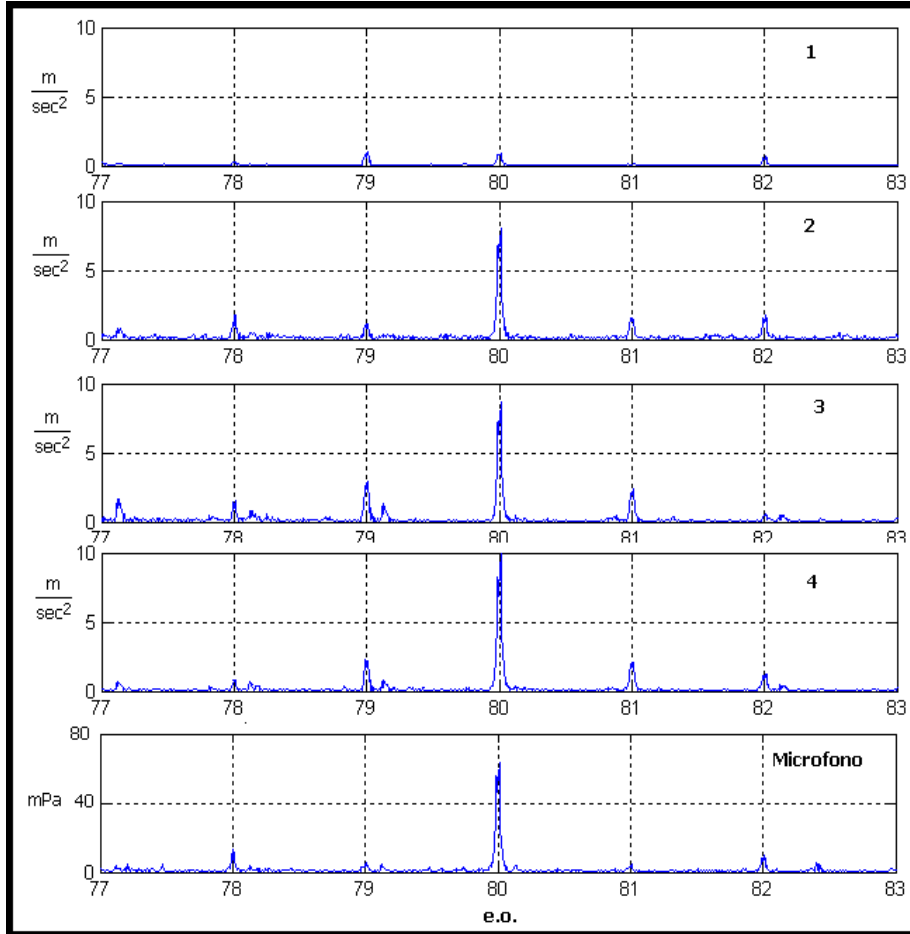


Figura E- 39 3.240.000 cicli 77-83

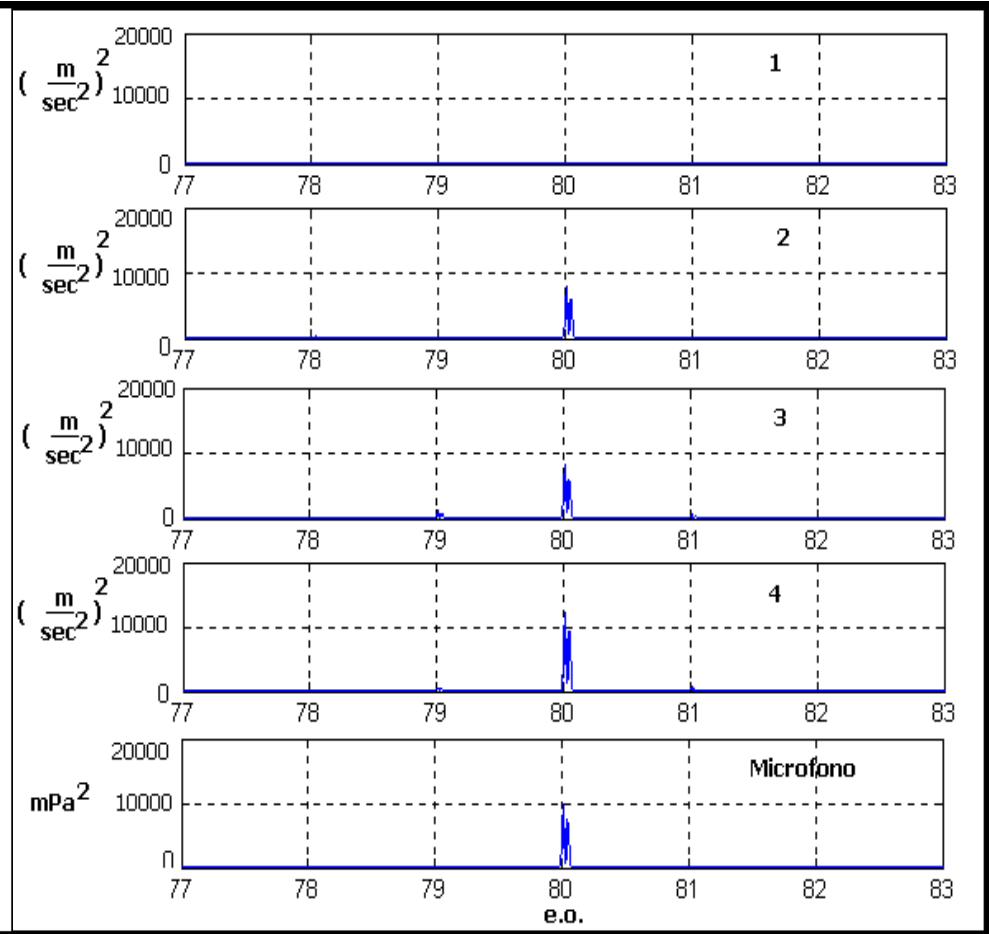


Figura E- 40 3.240.000 cicli 77-83 PSD

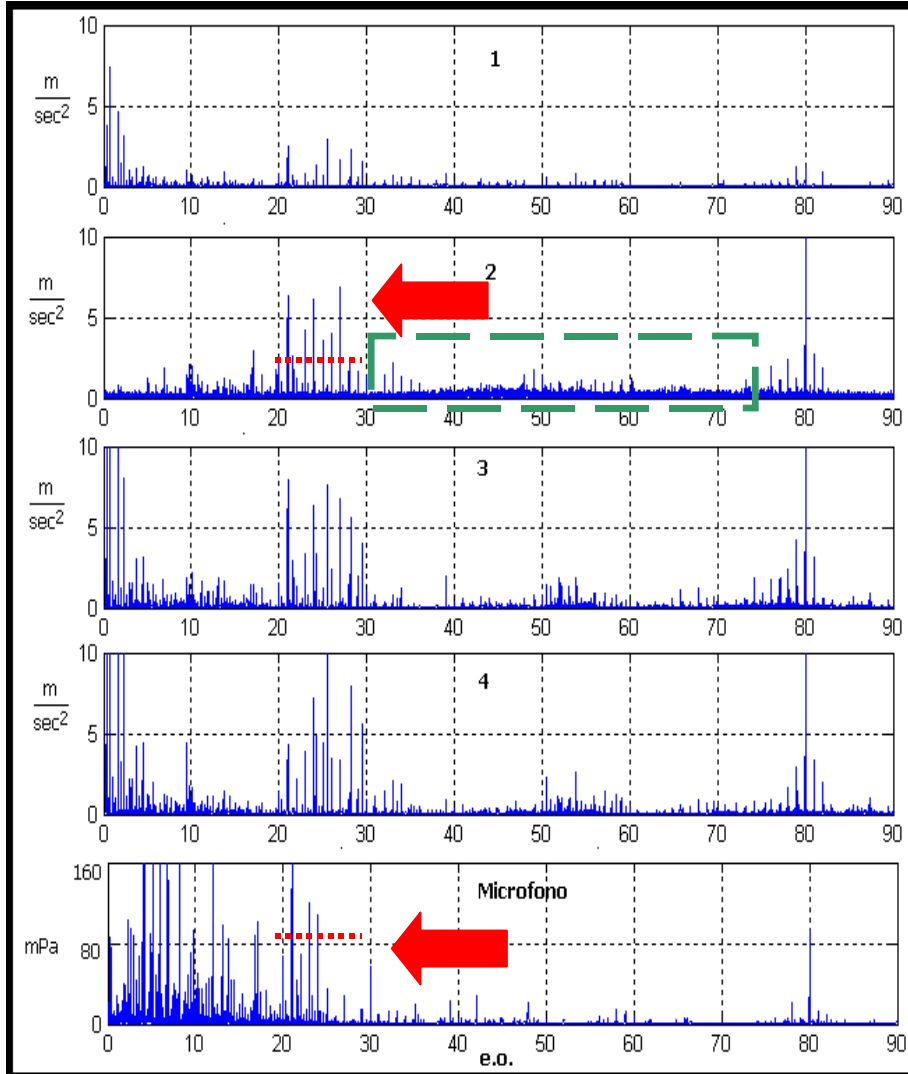


Figura E- 41 3.320.000 cicli 0-90

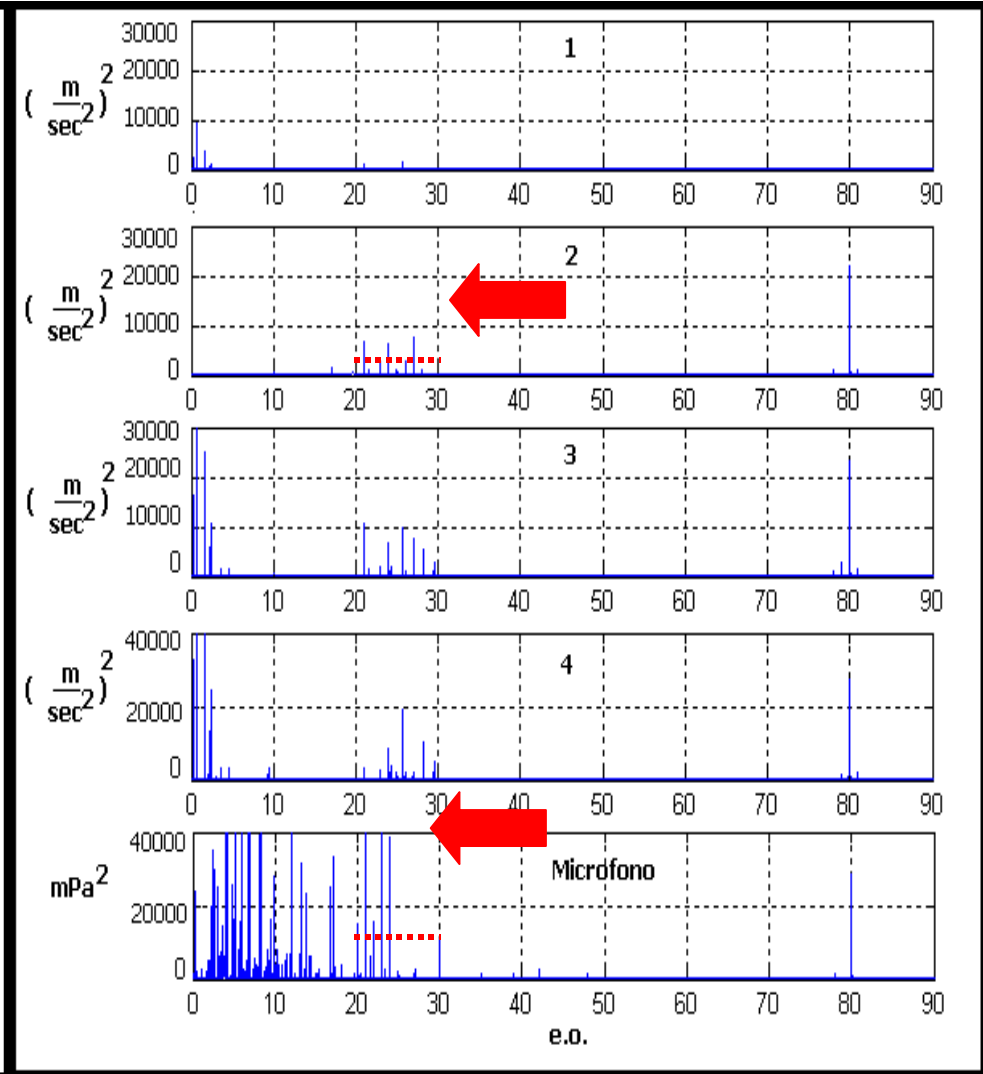


Figura E- 42 3.320.000 cicli 0-90 PSD

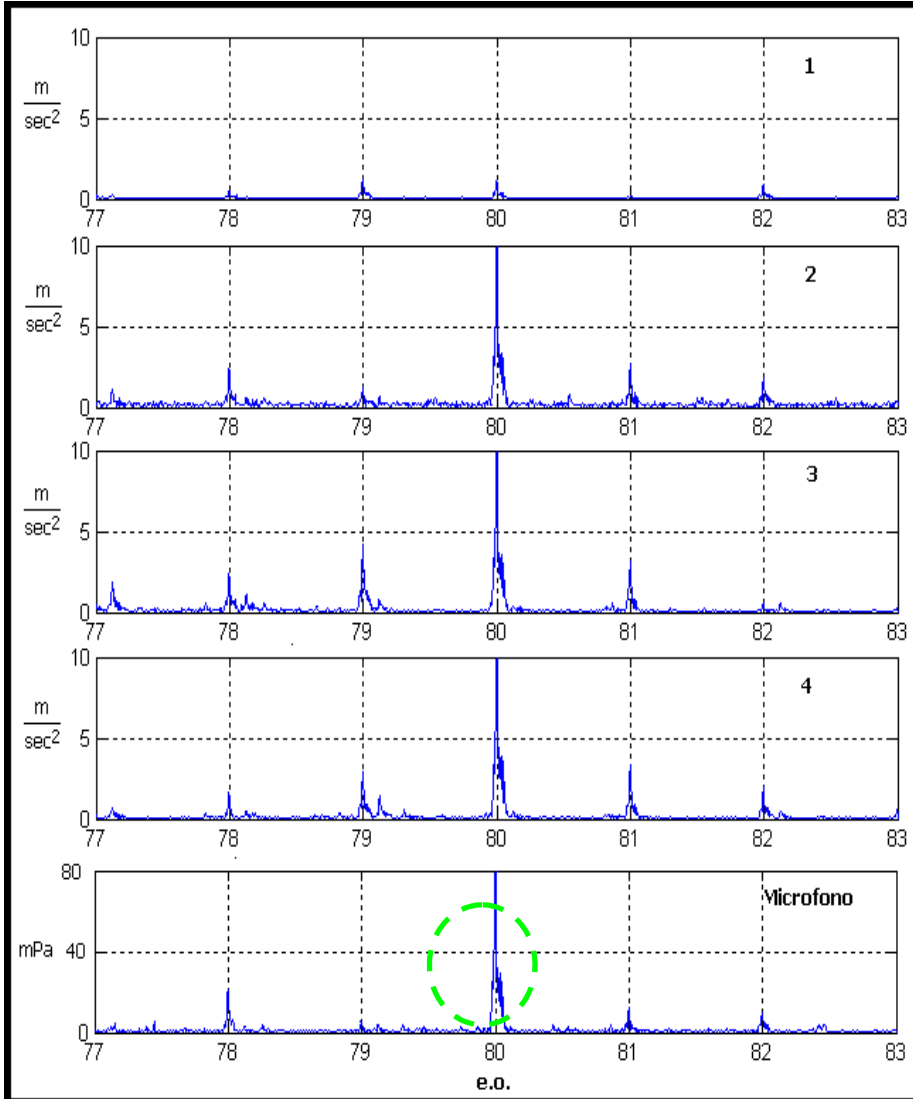


Figura E- 43 3.320.000 cicli 77-83

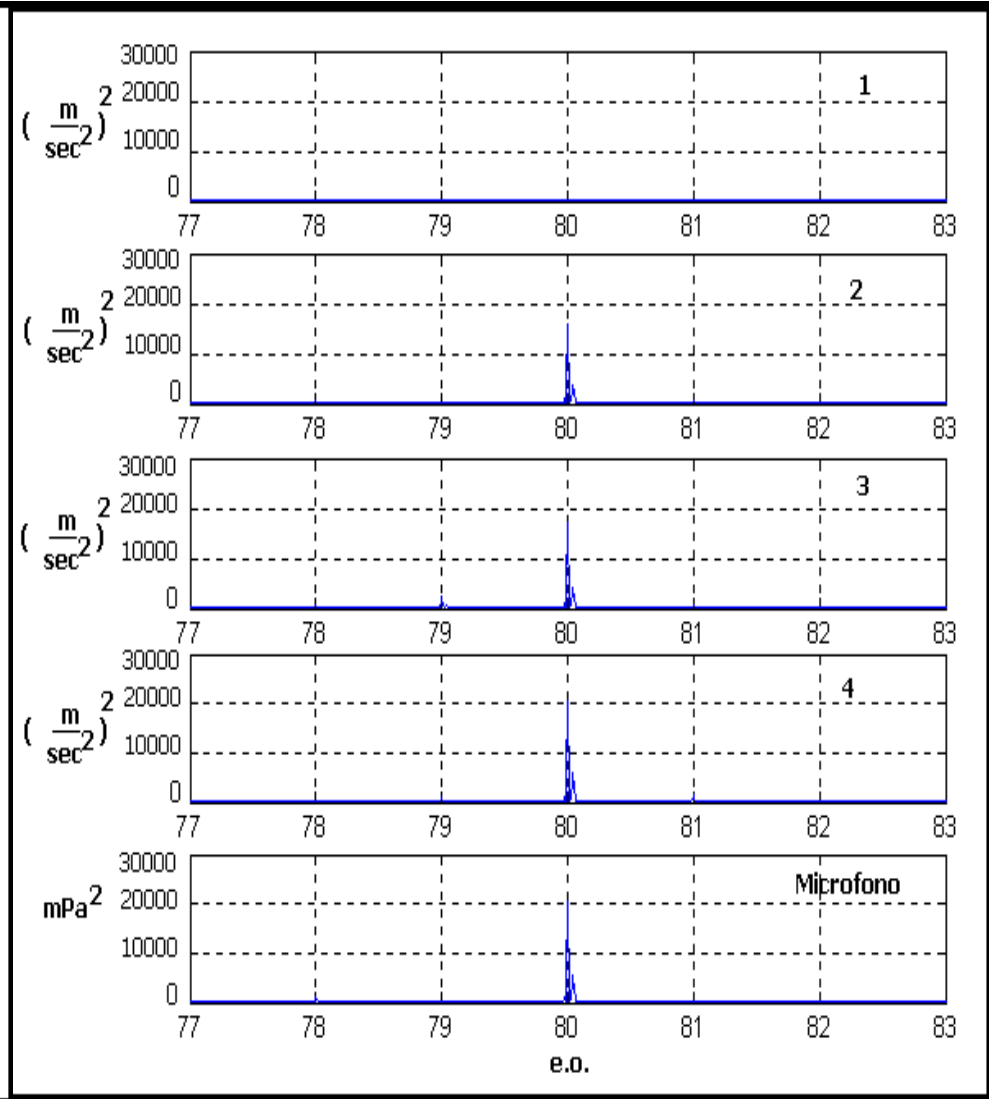


Figura E- 44 3.320.000 cicli 77-83