

Appendice D

D.1 Rappresentazione RMS

Le figure da D-2 a D-27 illustrano l'andamento del RMS ad intervalli di ½ milione di cicli fino ai 3.000.000 di cicli, per proseguire ad intervalli di 80.000 cicli, fino a visualizzare l'andamento relativo agli ultimi 120.000 cicli, sia del segnale originale che del segnale filtrato.

Per filtrare il segnale a bassa frequenza si è utilizzato la funzione BUTTER 0.3 passa-alto che produce la seguente risposta in ampiezza e in fase:

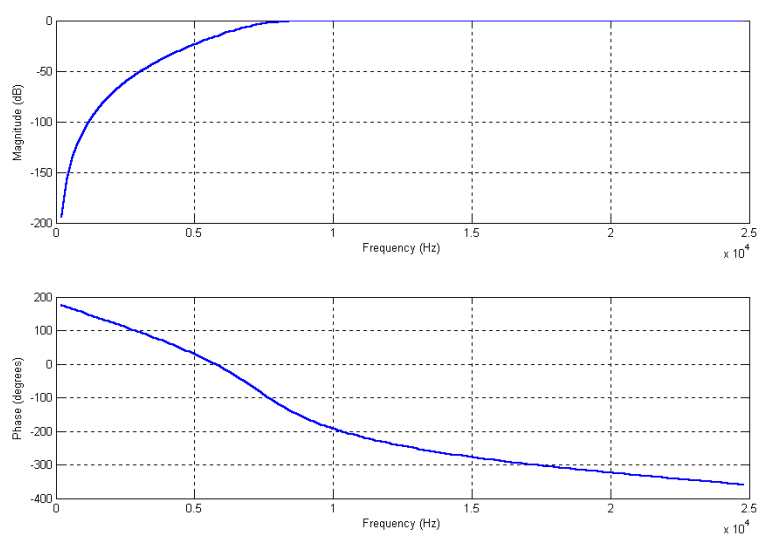


Figura D- 1 Filtro Butter 0.3

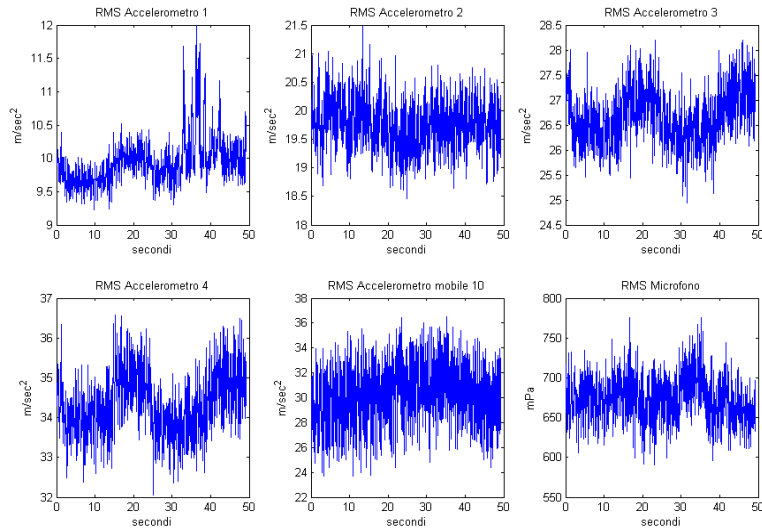


Figura D- 2Andamento del RMS a 0 Cicli

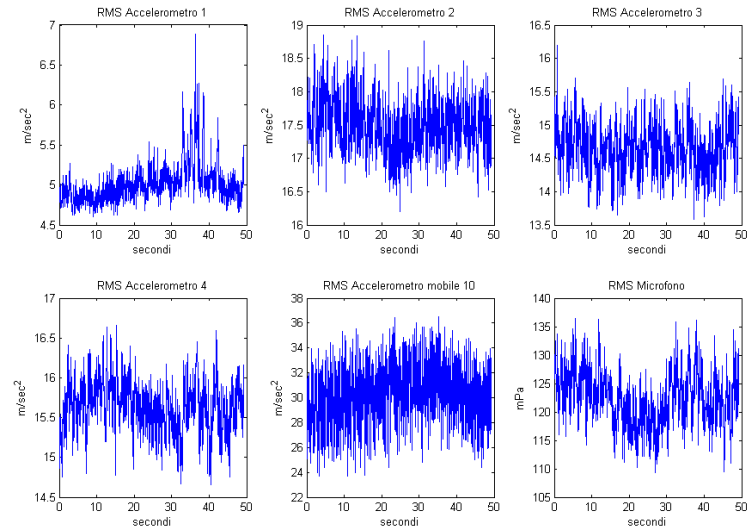


Figura D- 3 Andamento del RMS a 0 Cicli filtrato a bassa frequenza

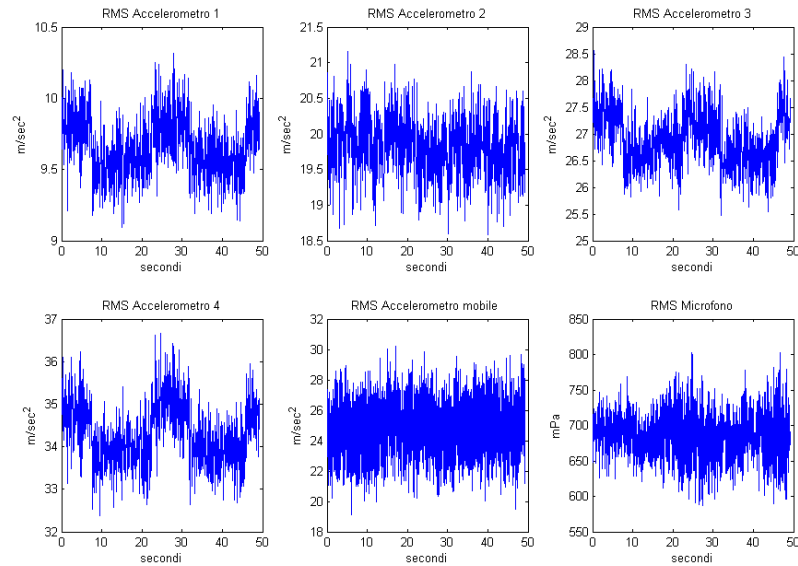


Figura D- 4Andamento del RMS a 500.000 Cicli

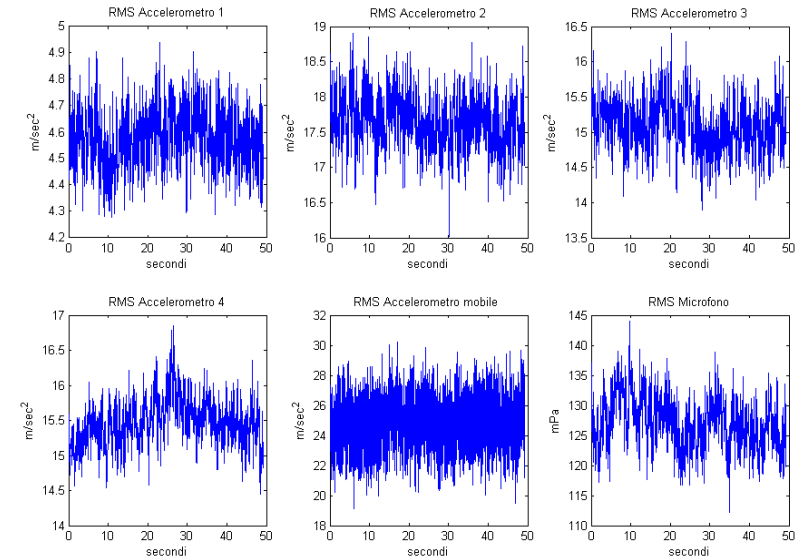


Figura D- 5 Andamento del RMS a 500.000 Cicli Filtrato a bassa frequenza

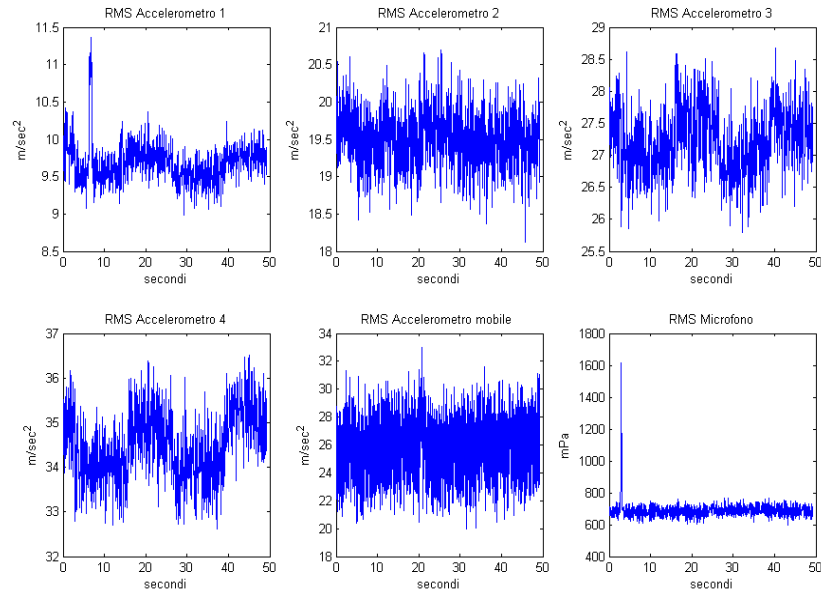


Figura D- 6Andamento del RMS a 1.000.000 Cicli

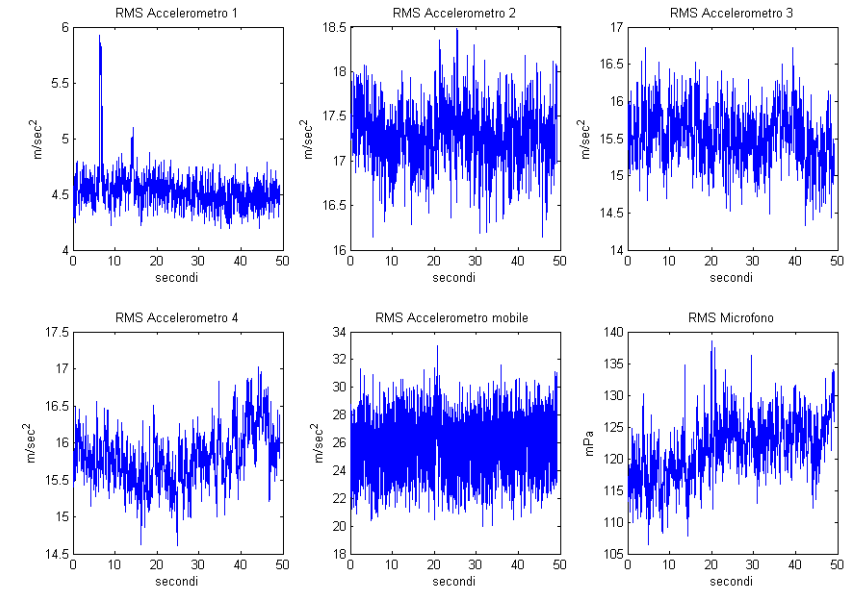


Figura D- 7Andamento del RMS a 500.000 Cicli Filtrato a bassa frequenza

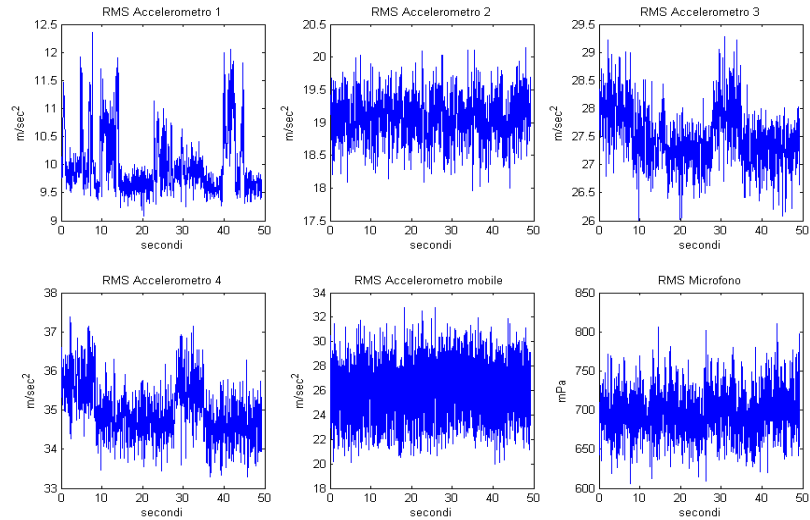


Figura D- 8Andamento del RMS a 1.500.000 Cicli

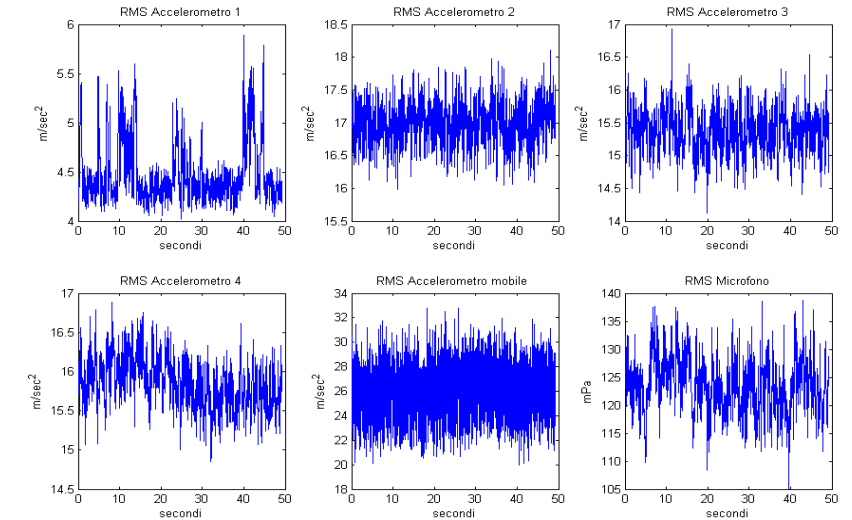


Figura D- 9 Andamento del RMS a 1.500.000 Cicli Filtrato a bassa frequenza

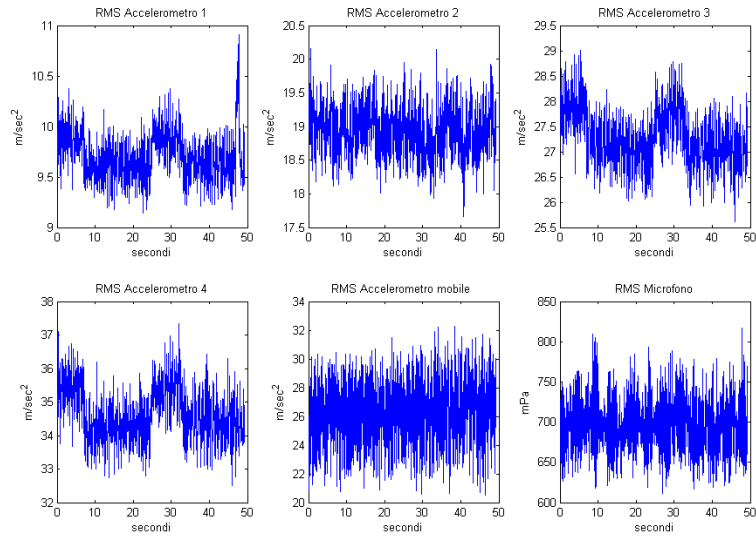


Figura D- 10 Andamento del RMS a 2.000.000 Cicli

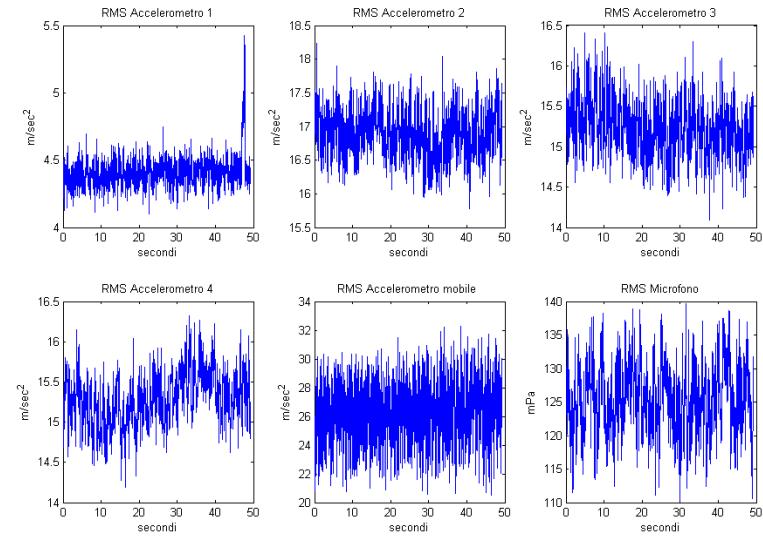


Figura D- 11 Andamento del RMS a 2.000.000 Cicli Filtrato a bassa frequenza

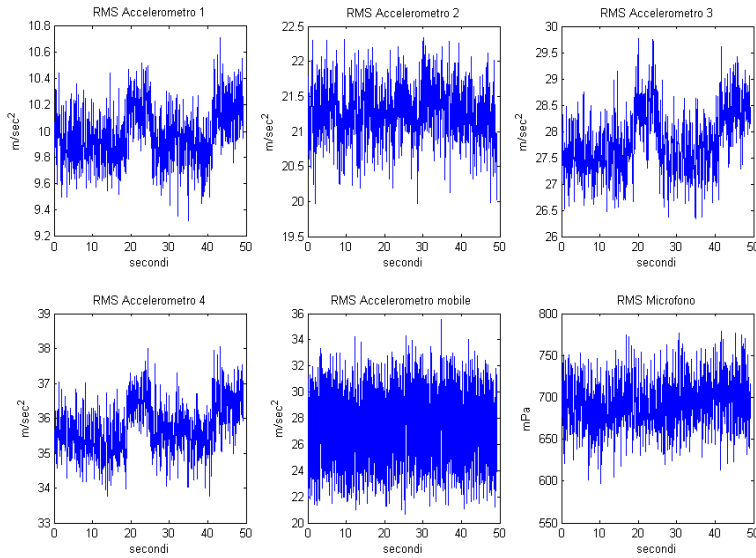


Figura D- 12 Andamento del RMS a 2.500.000 Cicli

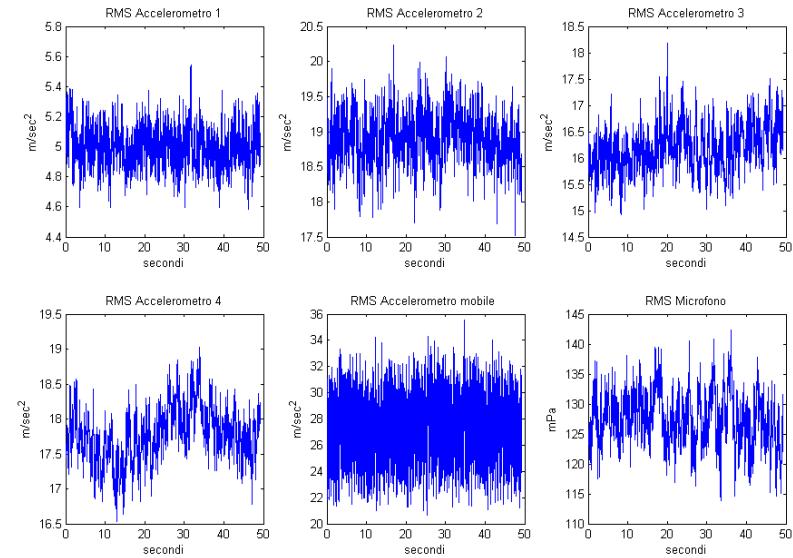


Figura D- 13 Andamento del RMS a 2.500.000 Cicli Filtrato a bassa frequenza

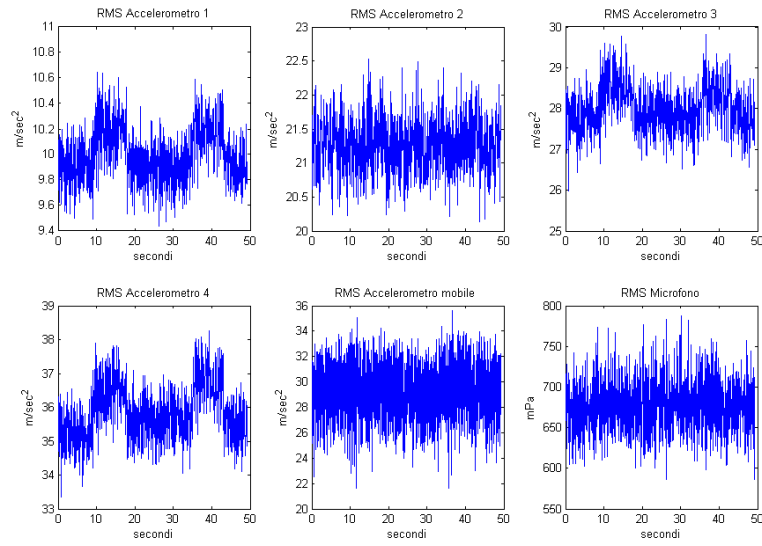


Figura D- 14 Andamento del RMS a 3.000.000 Cicli

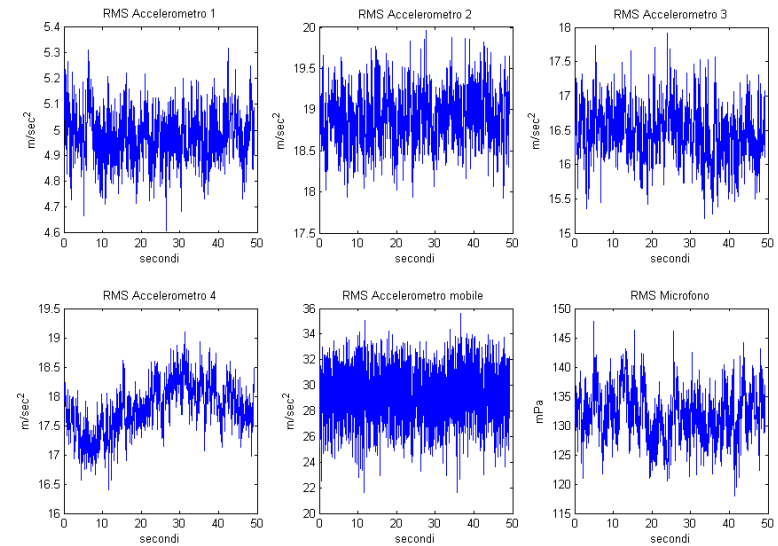


Figura D- 15 Andamento RMS a 3.000.000 Cicli Filtrato a bassa frequenza

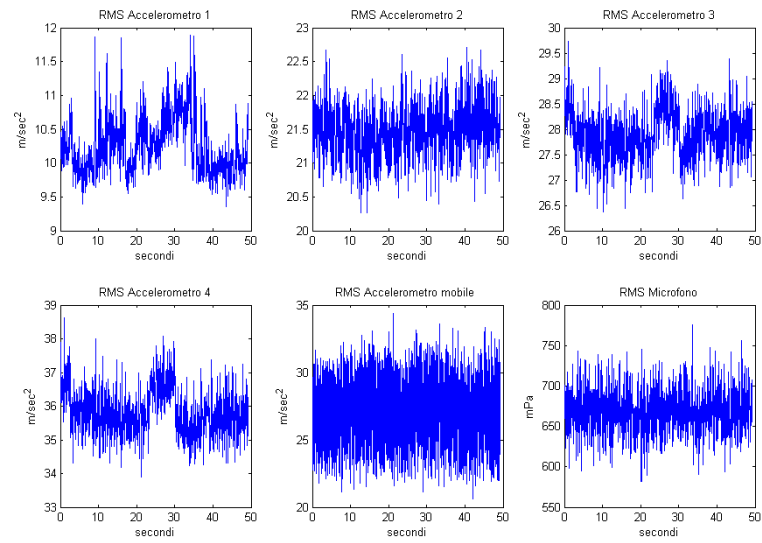


Figura D- 16 Andamento del RMS a 3.080.000 Cicli

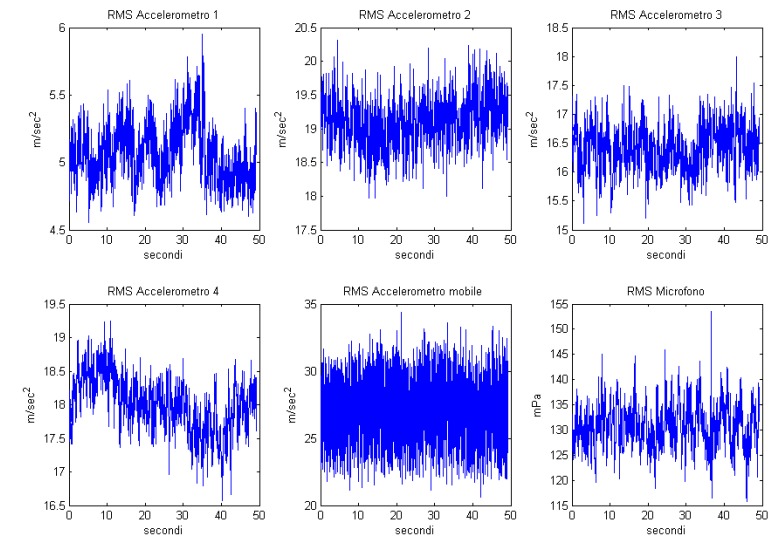


Figura D- 17 Andamento del RMS 3.080.000 Cicli Filtrato a bassa frequenza

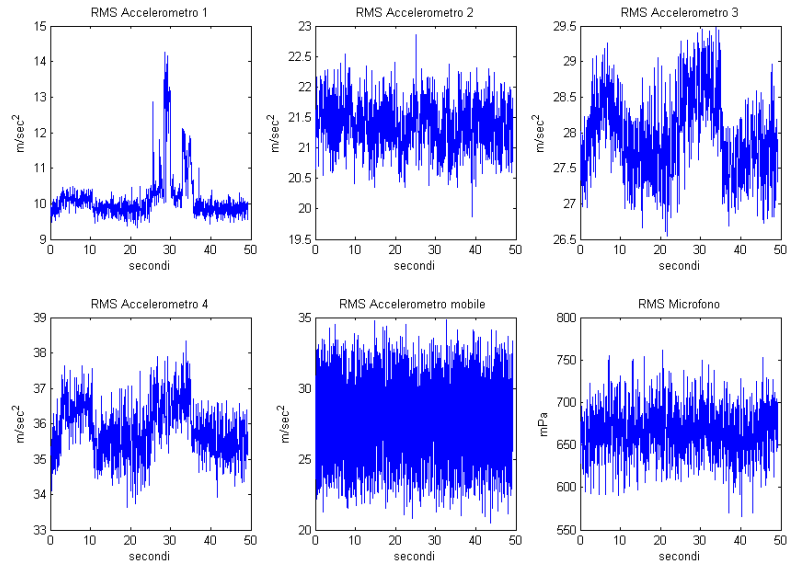


Figura D- 18 Andamento del RMS 3.160.000 Cicli

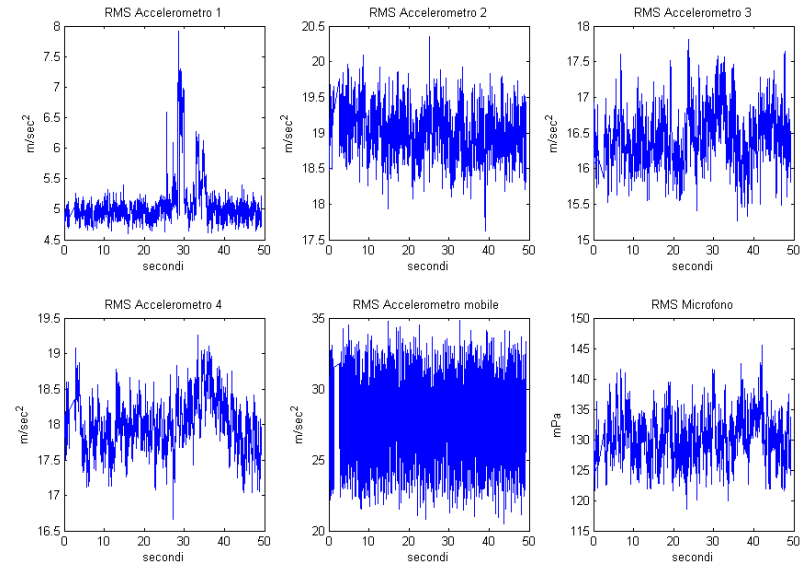


Figura D- 19 Andamento del RMS 3.160.000 Cicli Filtrato a bassa frequenza

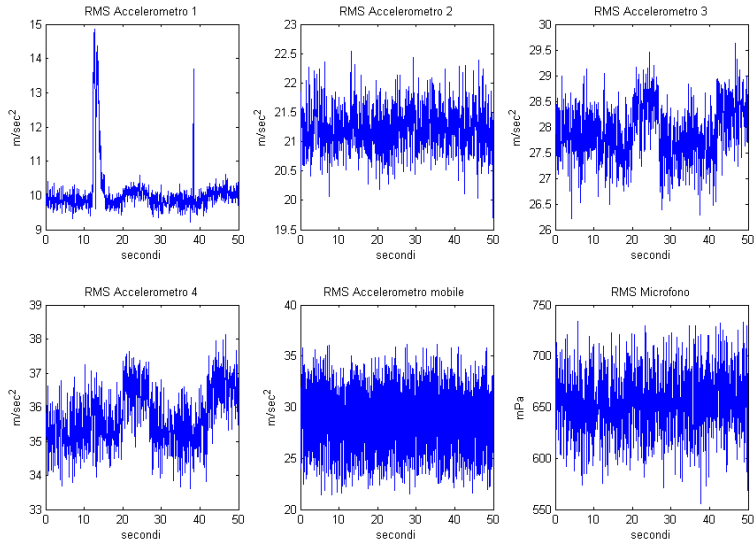


Figura D- 20 Andamento del RMS 3.240.000 Cicli

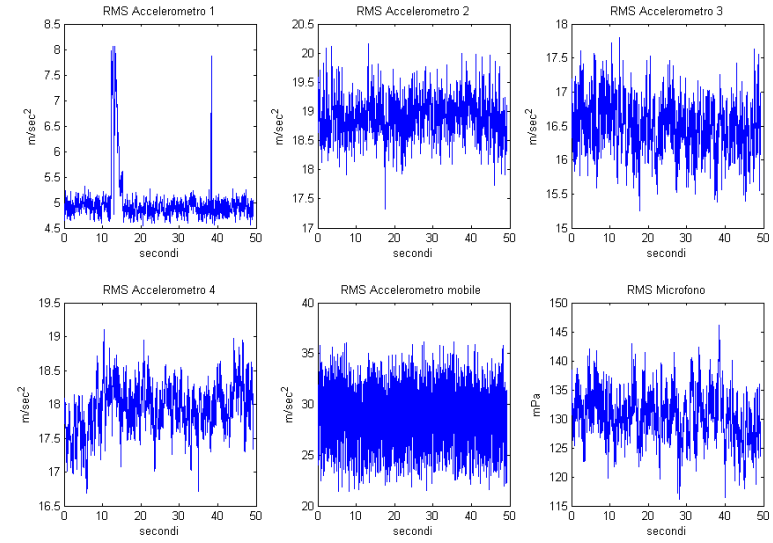


Figura D- 21 Andamento del RMS 3.240.000 Cicli Filtrato a bassa frequenza

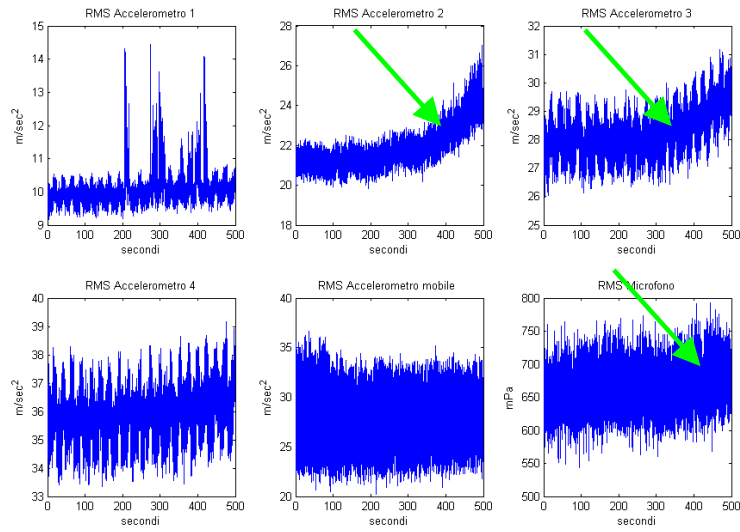


Figura D- 22 Andamento del RMS da 3.240.000 a 3.320.000 Cicli

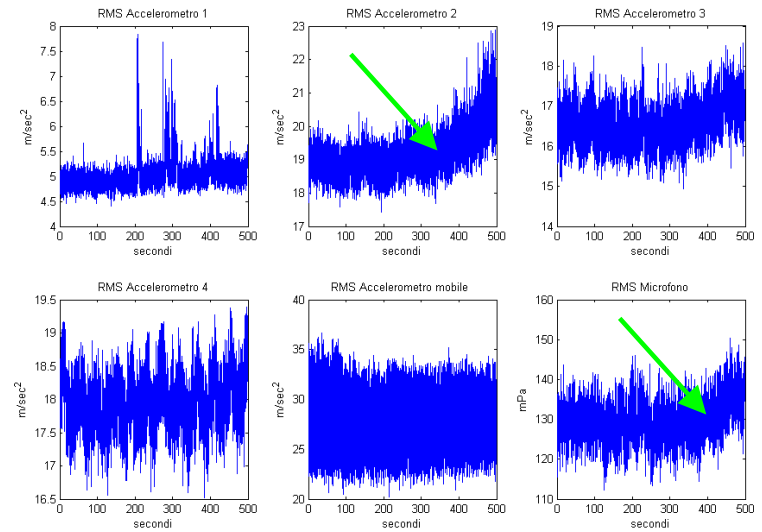


Figura D-23 Andamento RMS da 3.240.000 a 3.320.000 Cicli Filtrato a bassa frequenza

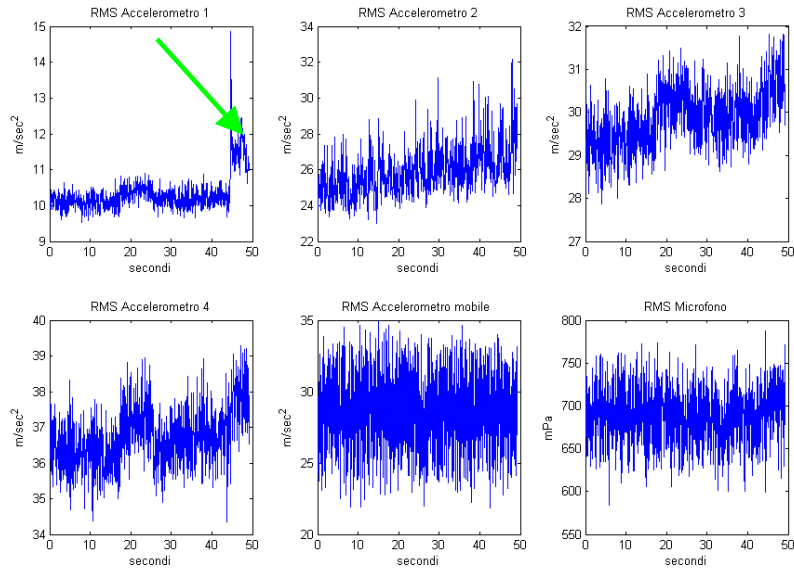


Figura D- 24 Andamento del RMS a 3.320.000 Cicli

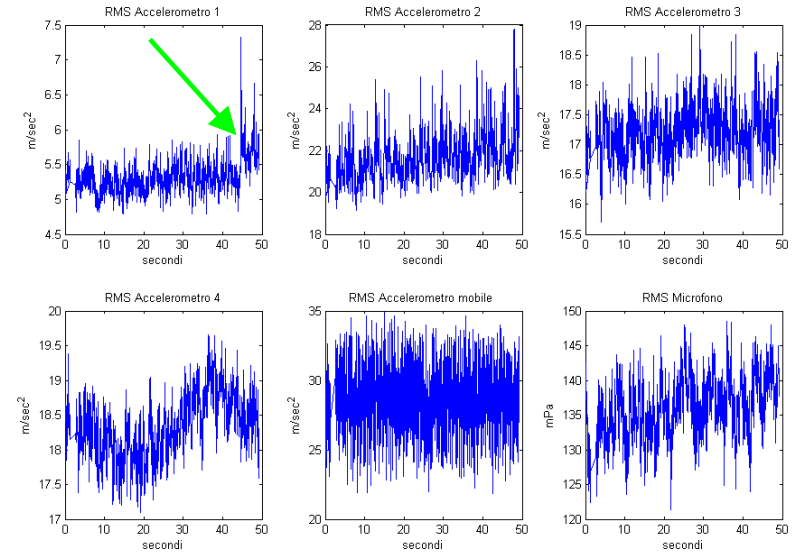


Figura D- 25 Andamento RMS a 3.320.000 Cicli Filtrato a bassa frequenza

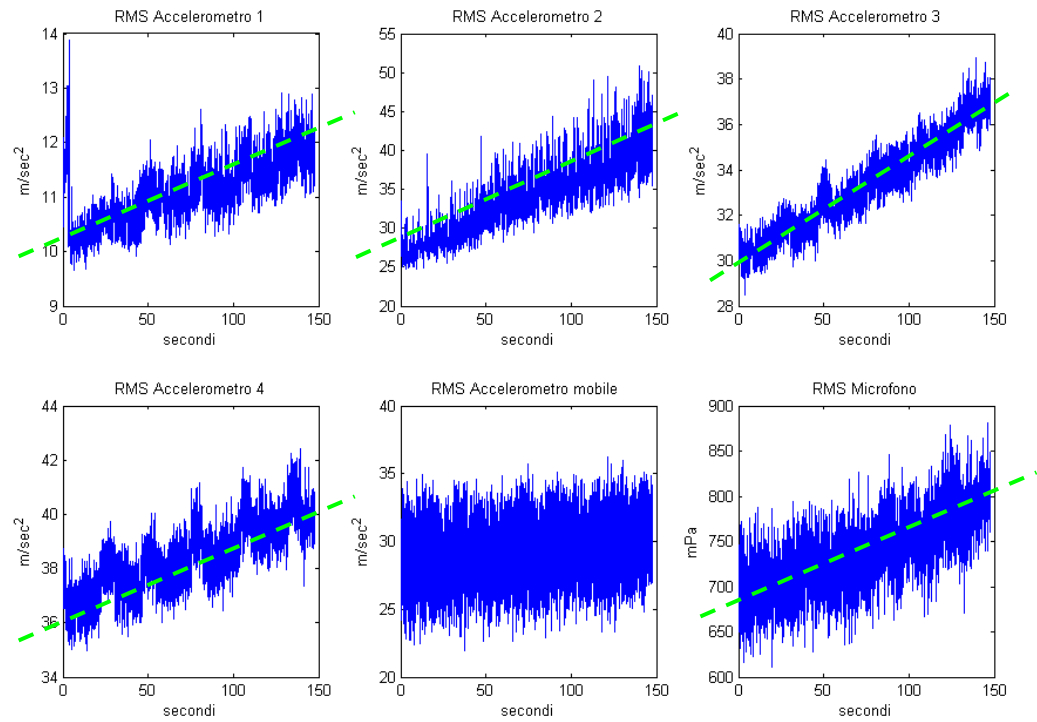


Figura D- 26 Andamento del RMS da 3.320.000 Cicli ad arresto banco

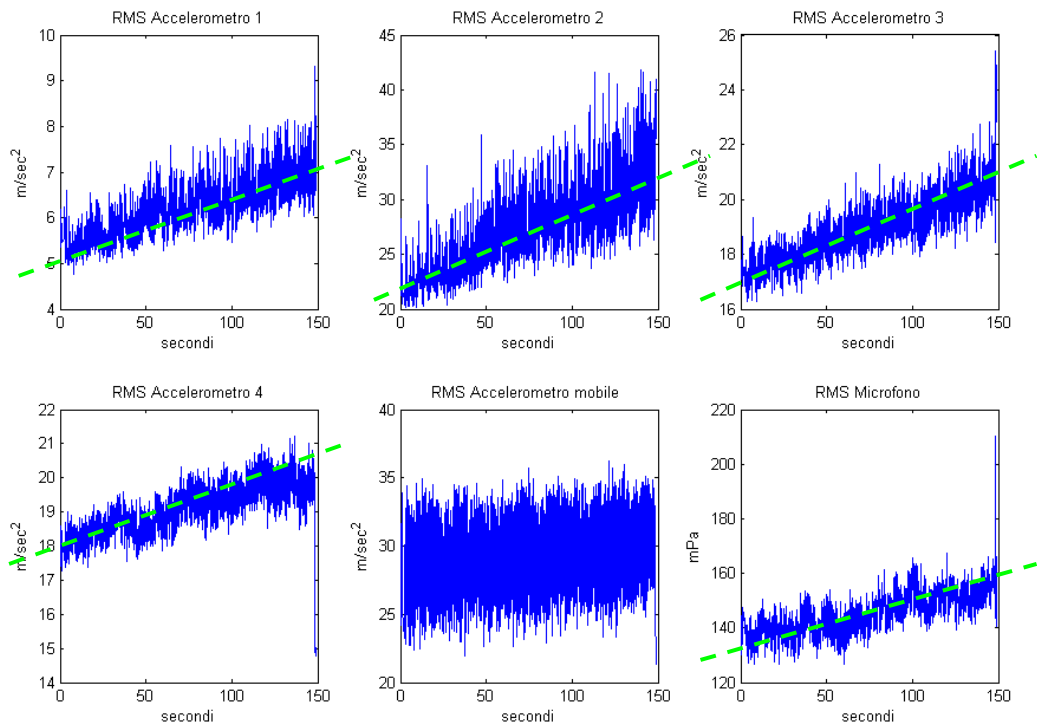


Figura D-27 Andamento RMS da 3.320.000 Cicli ad arresto con Filtro a bassa frequenza

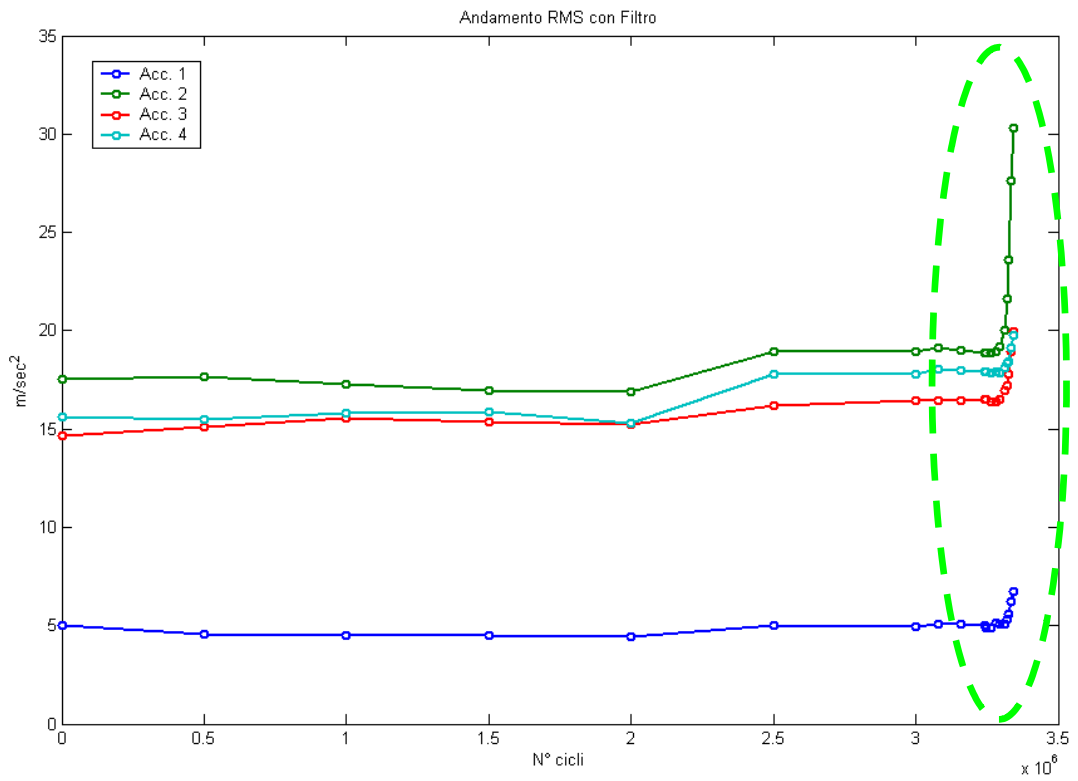


Figura D- 28 RMS ACCELEROMETRI ZONA TEST CON FILTRO BUTTER 0.3

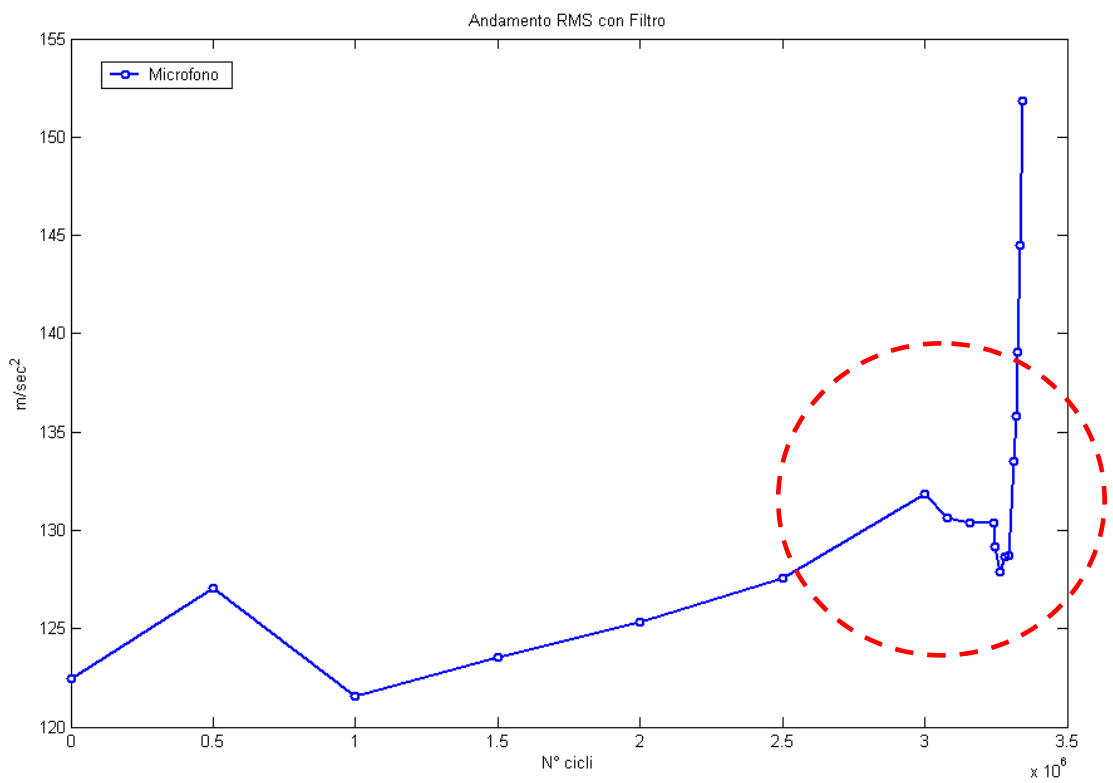


Figura D- 29 RMS MICROFONO CON FILTRO BUTTER 0.3

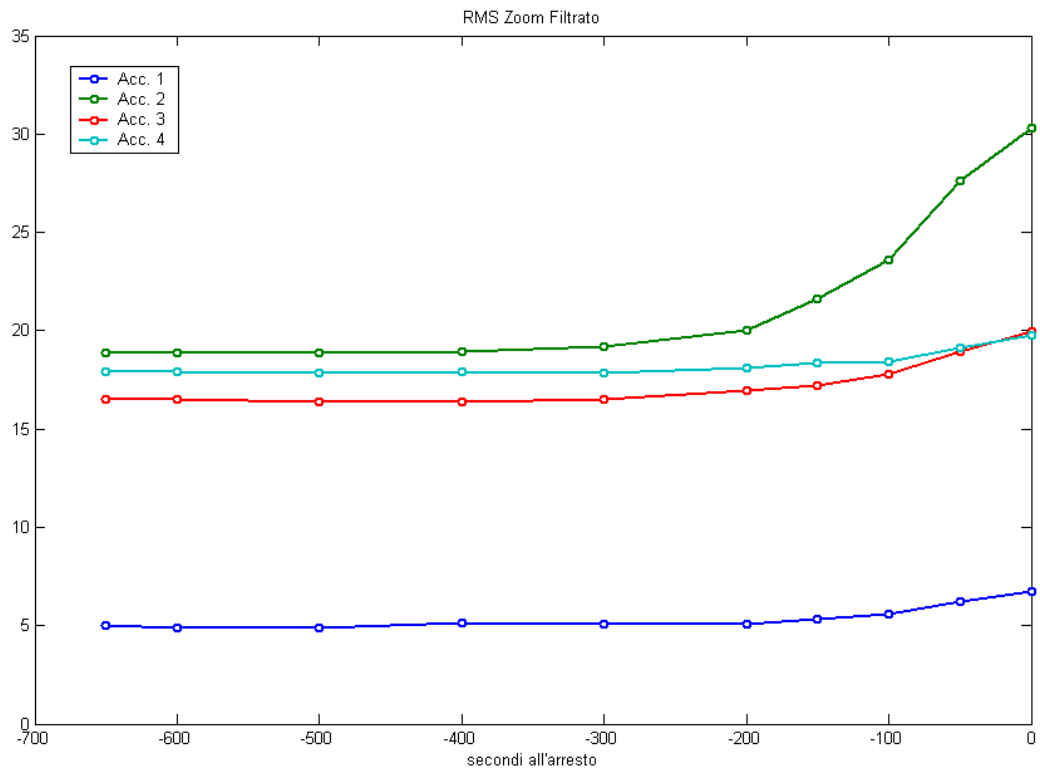


FIGURA D- 30 RMS ACCELEROMETRI ZONA TEST CON FILTRO BUTTER 0.3 ULIMI 10 MINUTI

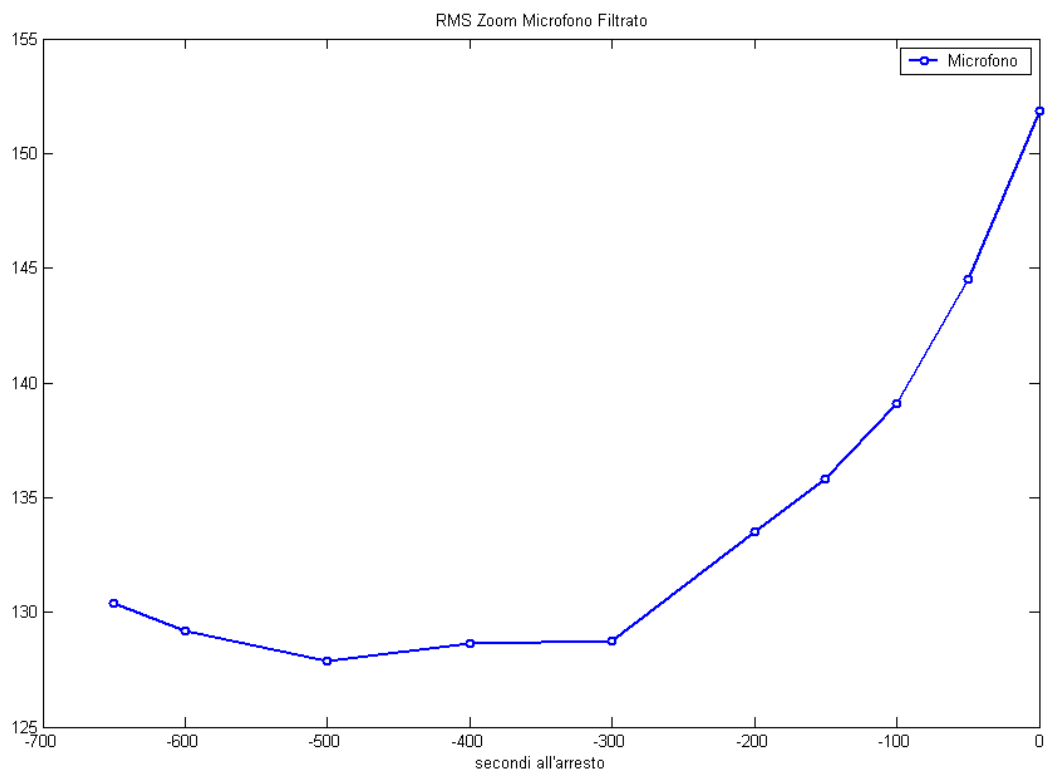


FIGURA D- 31 RMS MICROFONO CON FILTRO BUTTER 0.3 ULIMI 10 MINUTI

D.2 Rappresentazione CF

Le figure da D-32 a D-57 illustrano l'andamento del CF ad intervalli di ½ milione di cicli fino ai 3.000.000 di cicli, per proseguire ad intervalli di 80.000 cicli, fino a visualizzare l'andamento relativo agli ultimi 120.000 cicli, sia del segnale originale che del segnale filtrato.

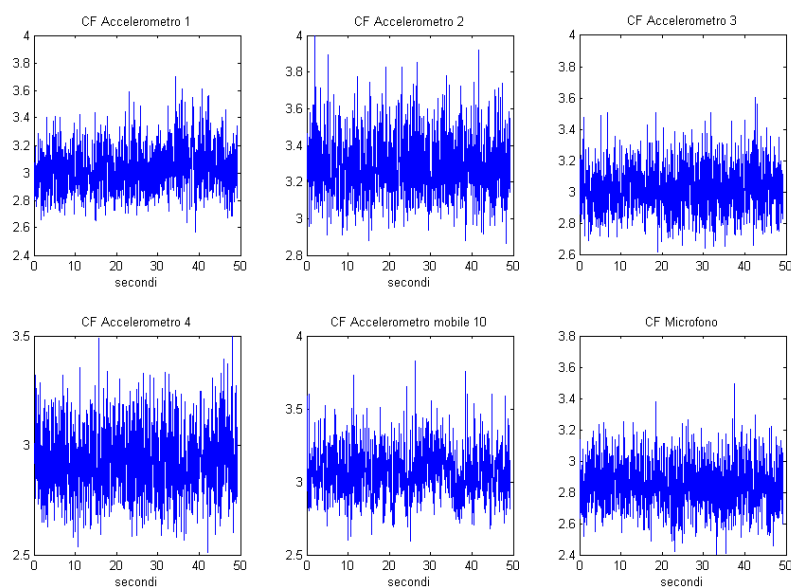


Figura D- 32 Andamento del CF a 0 Cicli

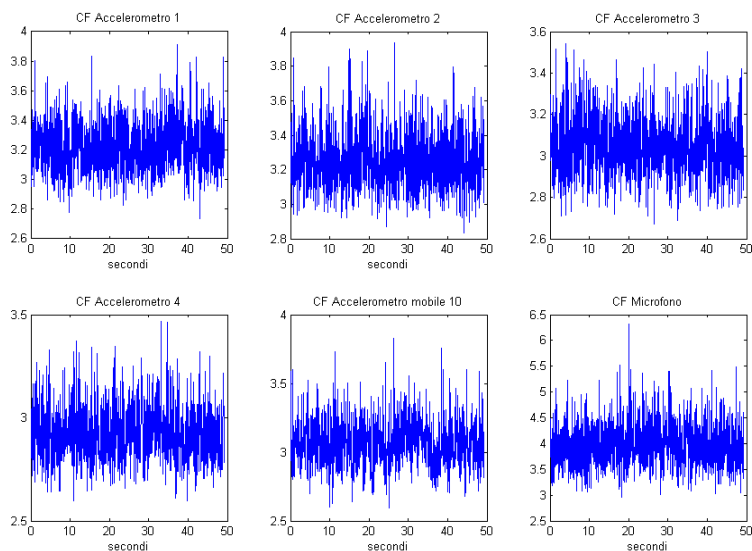


Figura D- 33 Andamento del CF a 0 Cicli filtrato a bassa frequenza

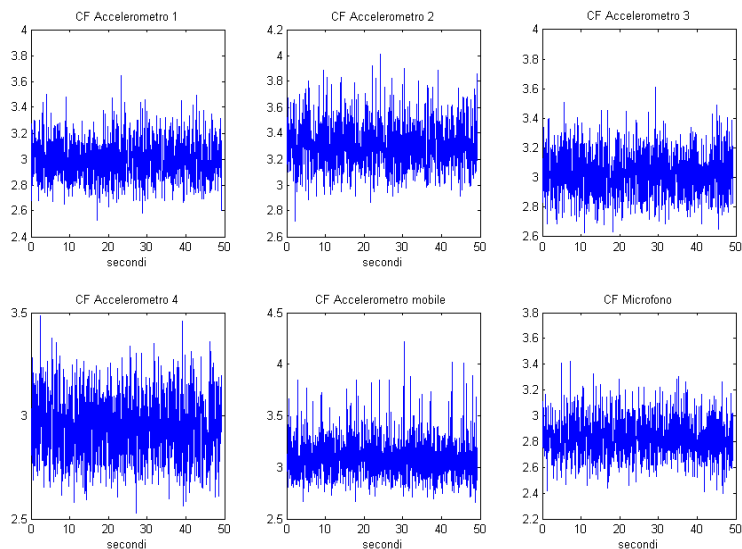


Figura D- 34 Andamento del CF a 500.000 Cicli

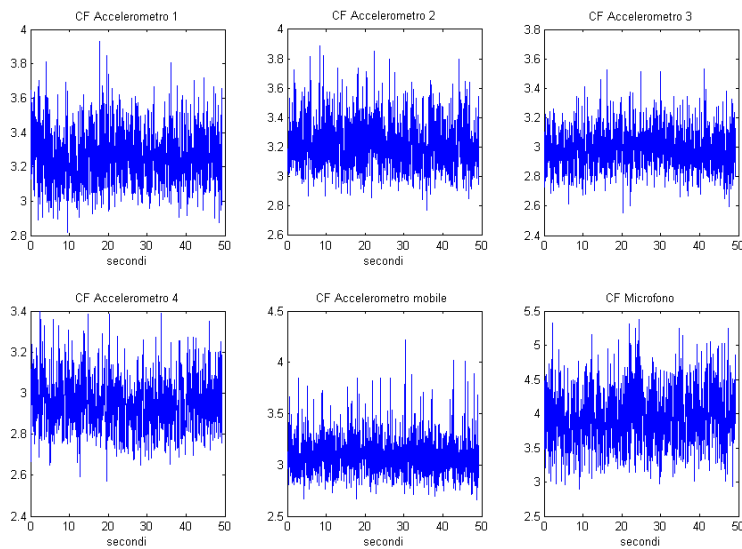


Figura D- 35 Andamento del CF a 500.000 Cicli Filtrato a bassa frequenza

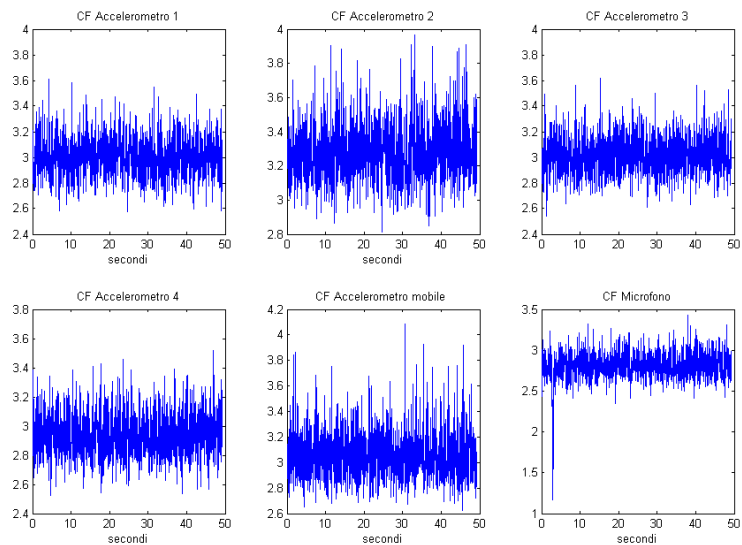


Figura D- 36 Andamento del CF a 1.000.000 Cicli

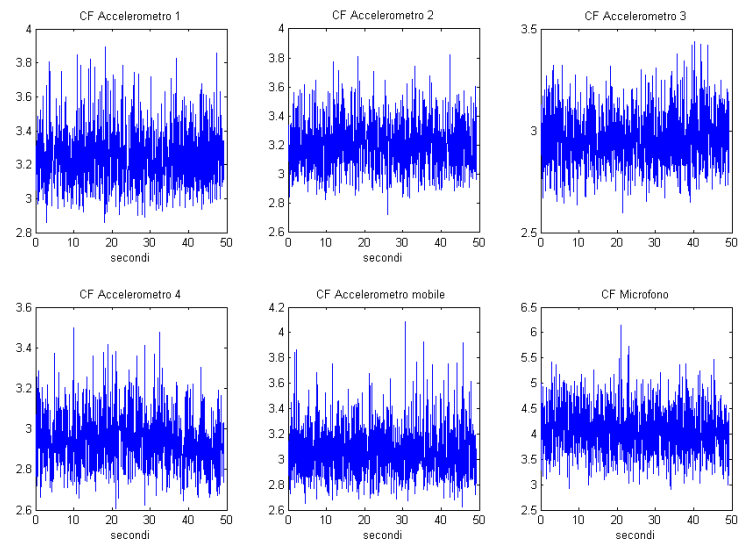


Figura D- 37 Andamento del CF a 1.000.000 Cicli Filtrato a bassa frequenza

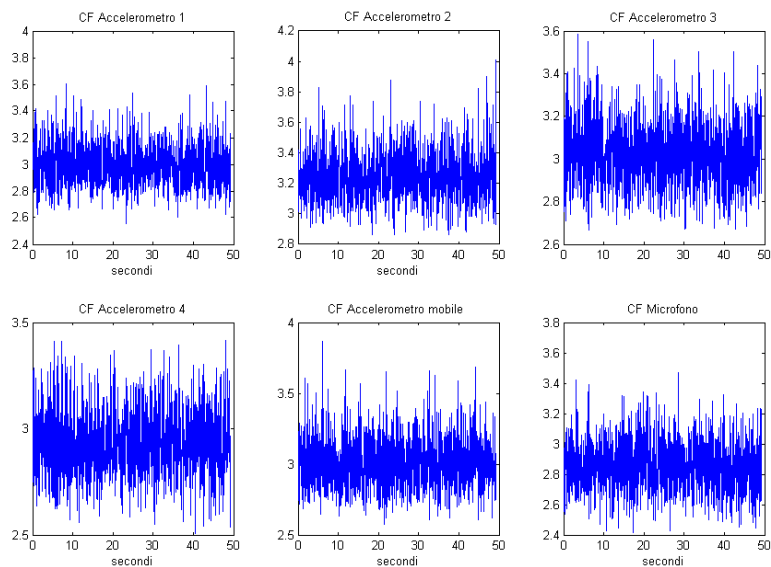


Figura D- 38 Andamento del CF a 1.500.000 Cicli

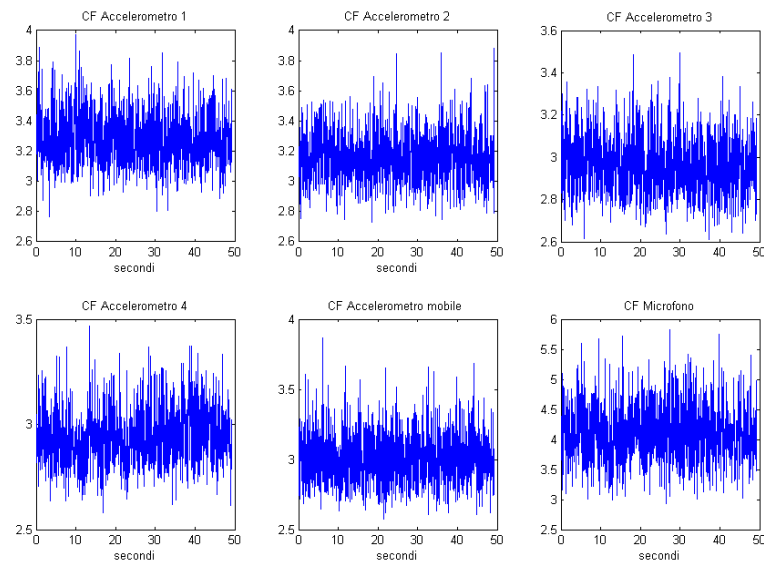


Figura D- 39 Andamento del CF a 1.500.000 Cicli Filtrato a bassa frequenza

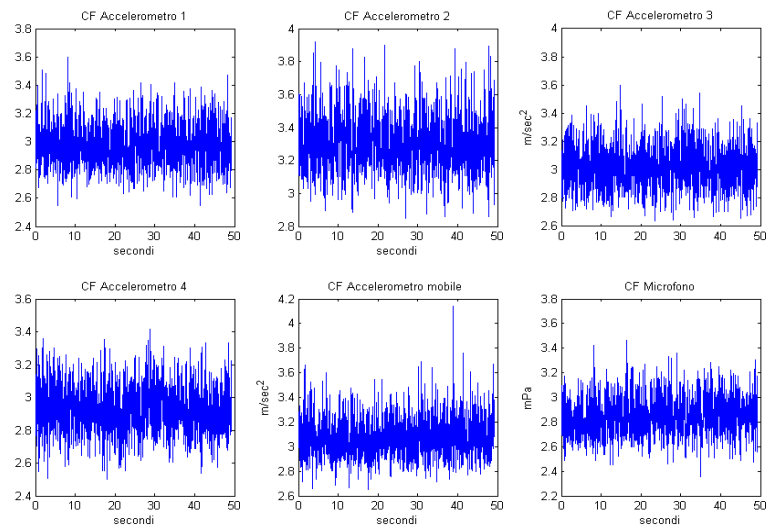


Figura D- 40 Andamento del CF a 2.000.000 Cicli

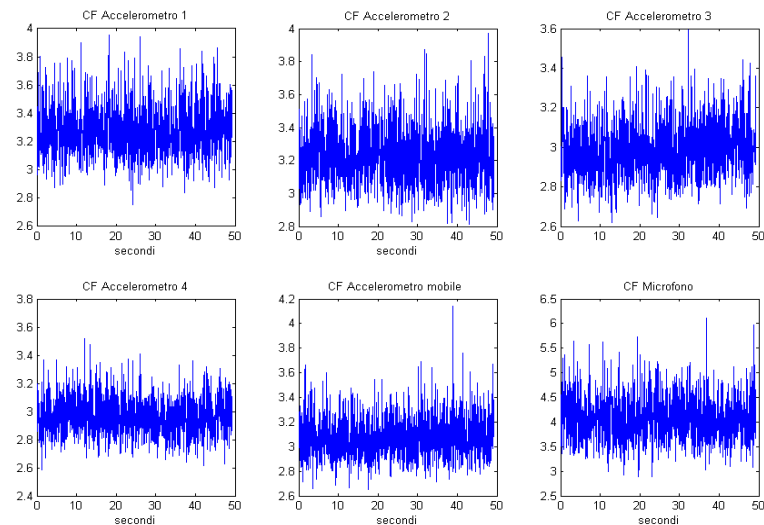


Figura D- 41 Andamento del CF a 2.000.000 Cicli Filtrato a bassa frequenza

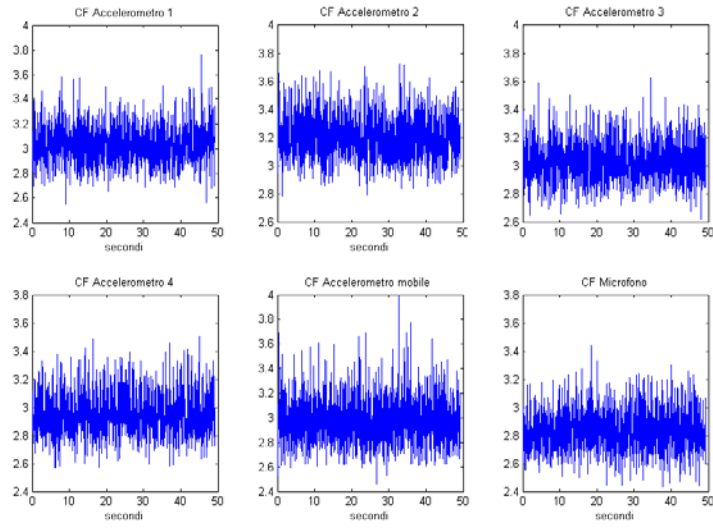


Figura D- 42 Andamento del CF a 2.500.000 Cicli

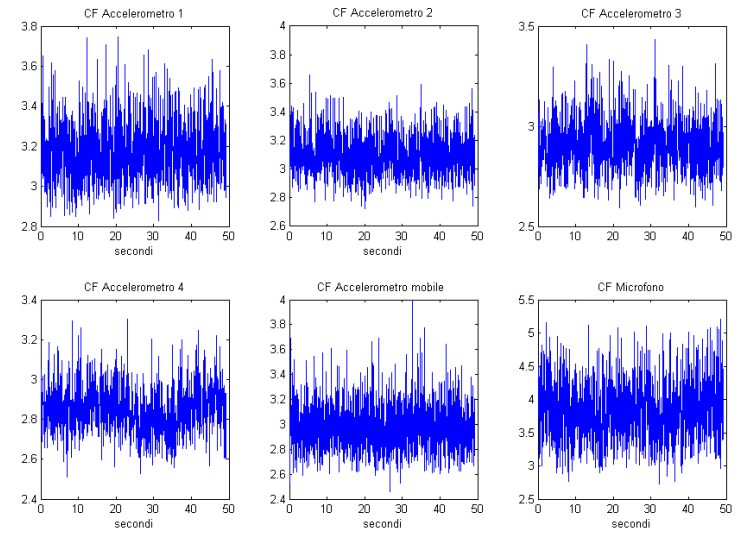


Figura D- 43 Andamento del CF a 2.500.000 Cicli Filtrato a bassa frequenza

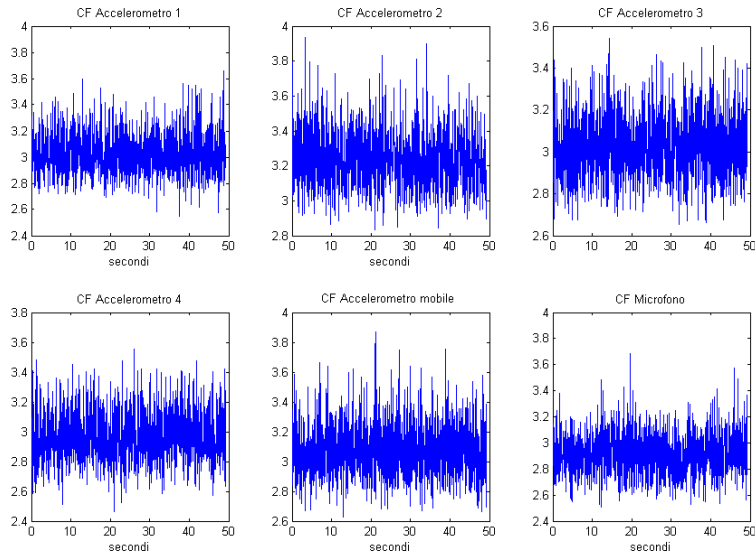


Figura D- 44 Andamento del CF a 3.000.000 Cicli

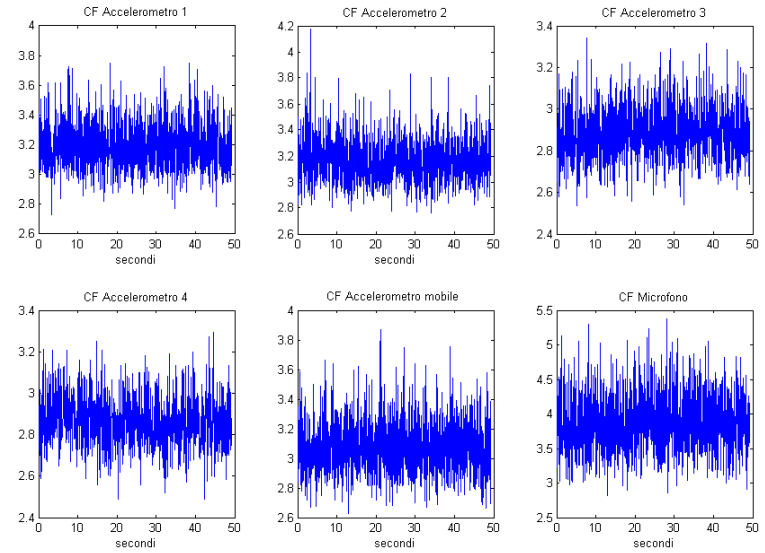


Figura D- 45 Andamento del CF a 3.000.000 Cicli Filtrato a bassa frequenza

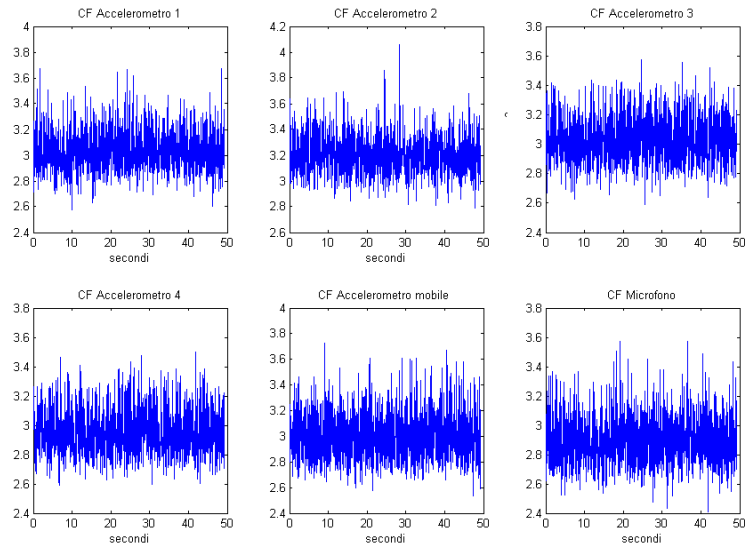


Figura D- 46 Andamento del CF a 3.080.000 Cicli

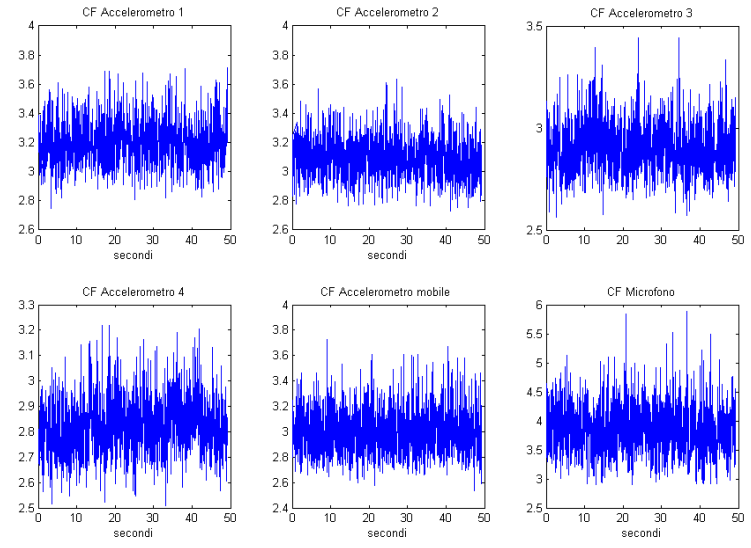


Figura D- 47 Andamento del CF 3.080.000 Cicli Filtrato a bassa frequenza

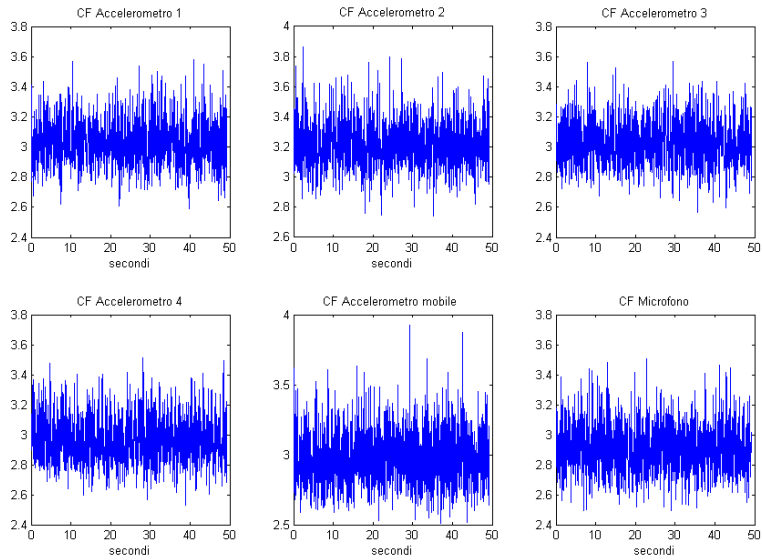


Figura D- 48 Andamento del CF 3.160.000 Cicli

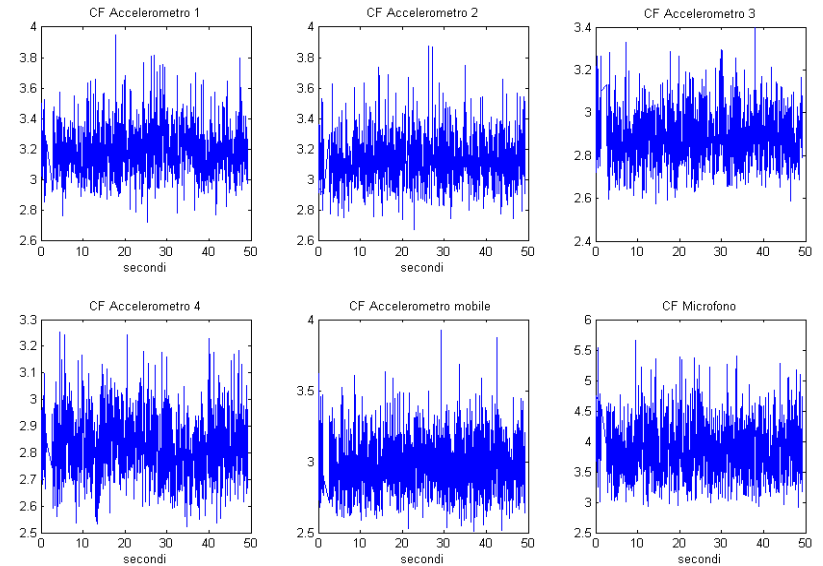


Figura D- 49 Andamento del CF 3.160.000 Cicli Filtrato a bassa frequenza

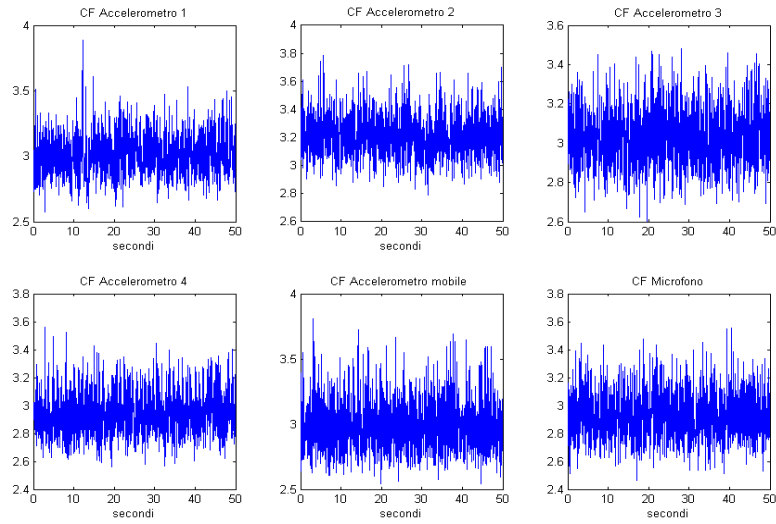


Figura D- 50 Andamento del CF 3.240.000 Cicli

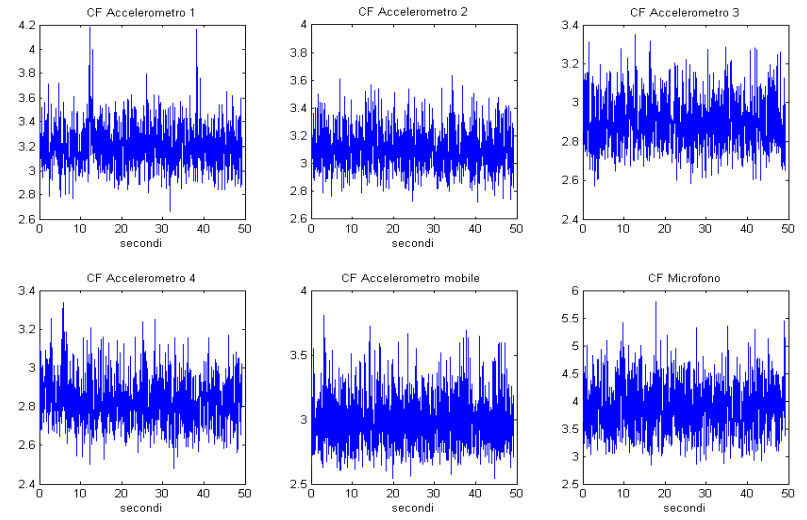


Figura D- 51 Andamento del CF 3.240.000 Cicli Filtrato a bassa frequenza

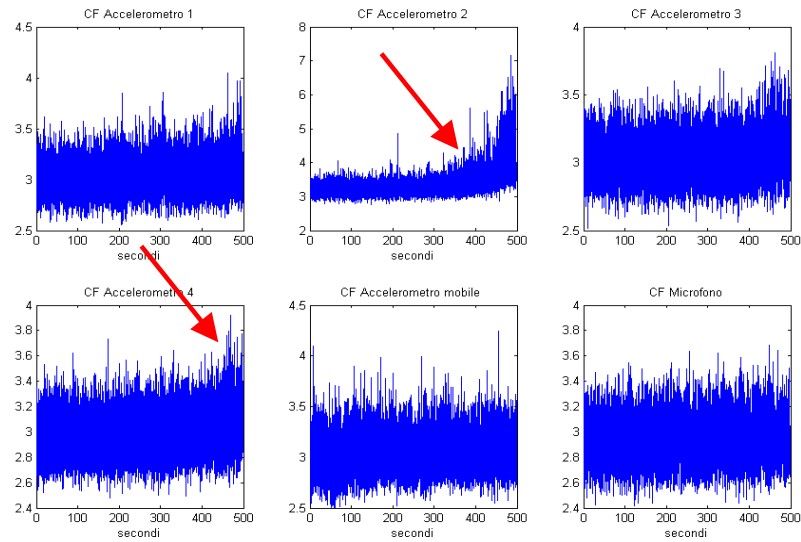


Figura D- 52 Andamento del CF da 3.240.000 a 3.320.000 Cicli

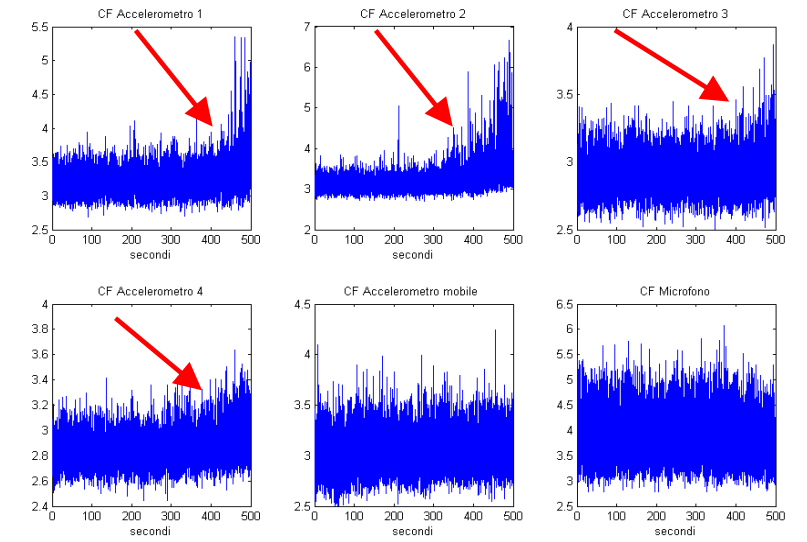


Figura D-53 Andamento CF da 3.240.000 a 3.320.000 Cicli Filtrato a bassa frequenza

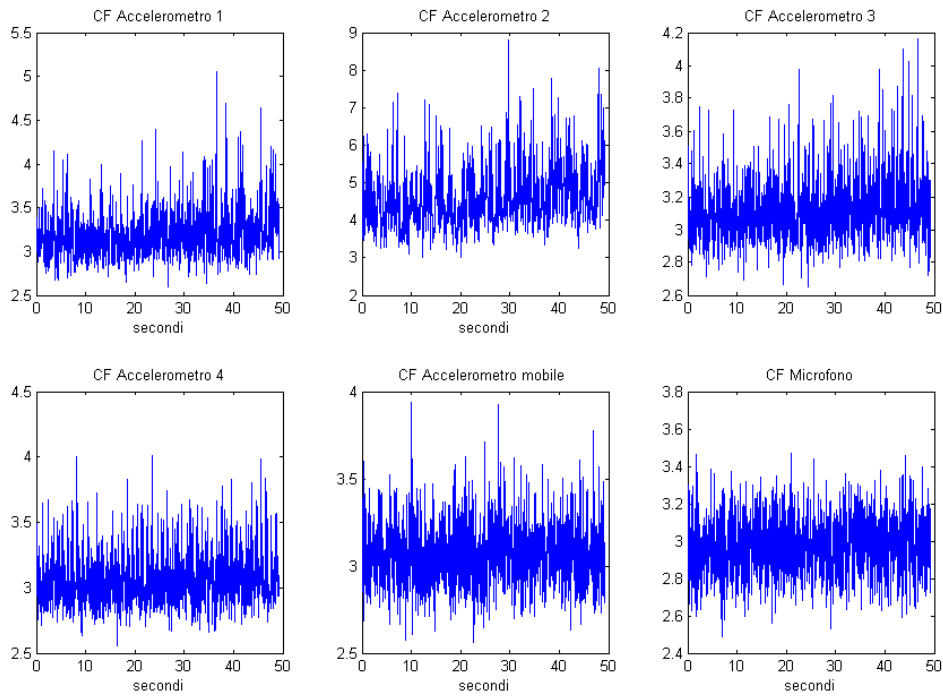


Figura D- 54 Andamento del CF a 3.320.000 Cicli

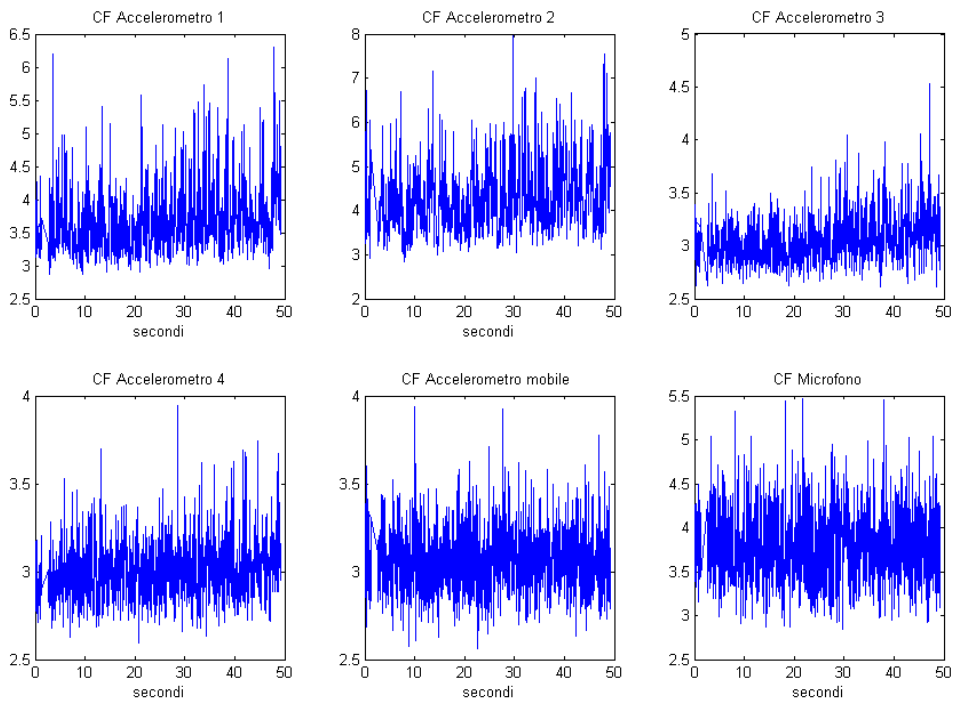


Figura D- 55 Andamento del CF a 3.320.000 Cicli Filtrato a bassa frequenza

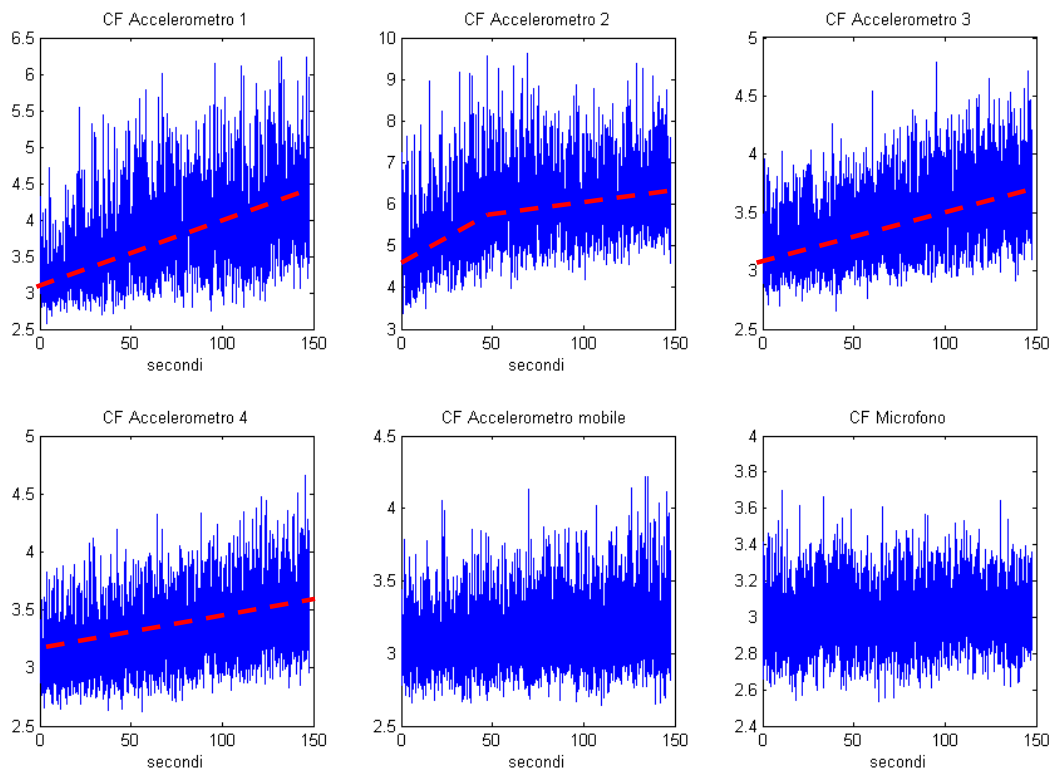


Figura D- 56 Andamento del CF da 3.320.000 Cicli ad arresto banco

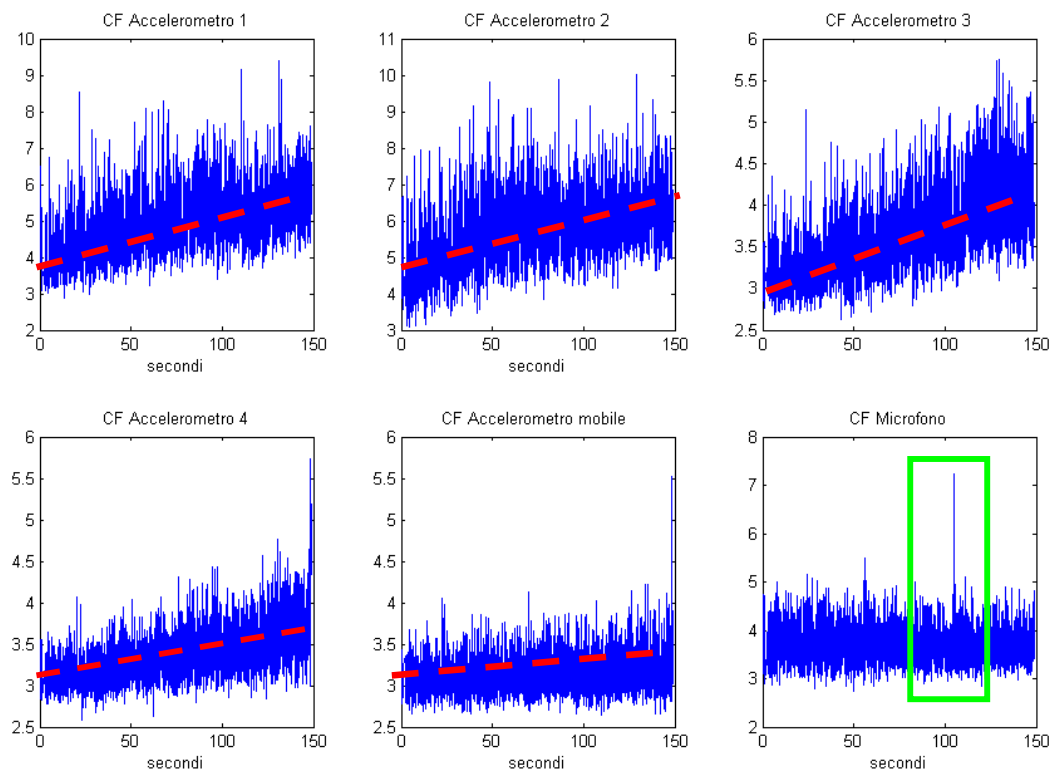


Figura D- 57 Andamento del CF da 3.320.000 Cicli ad arresto banco Filtrato a bassa frequenza

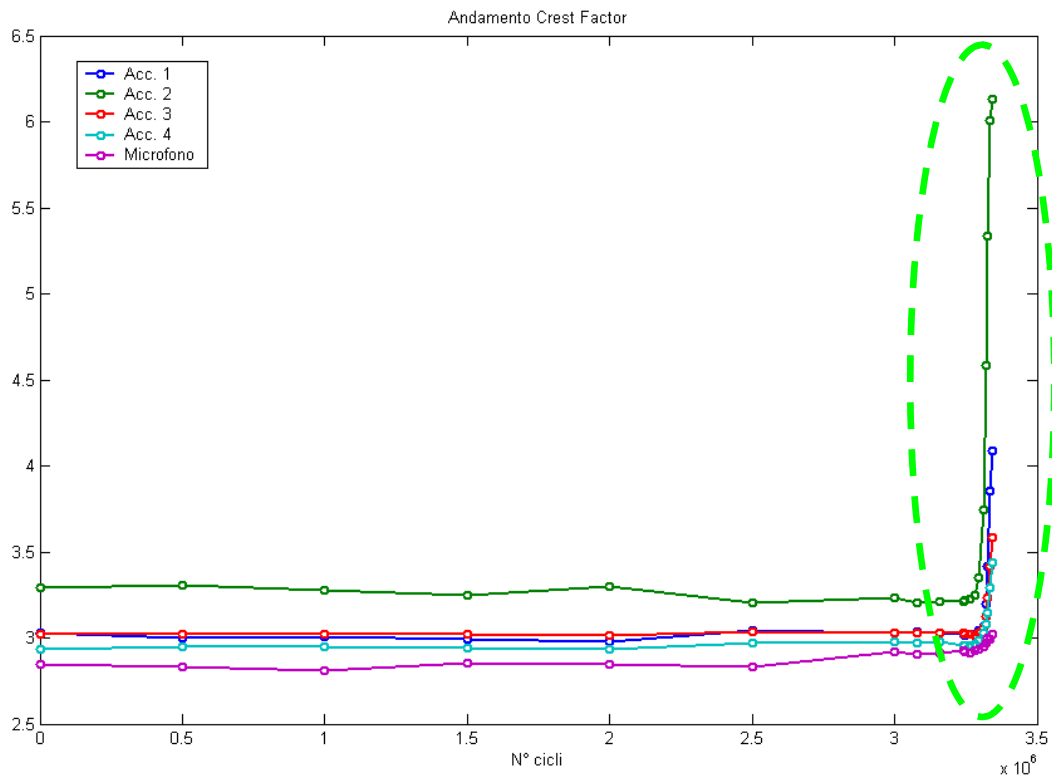


Figura D- 58 Andamento Crest Factor

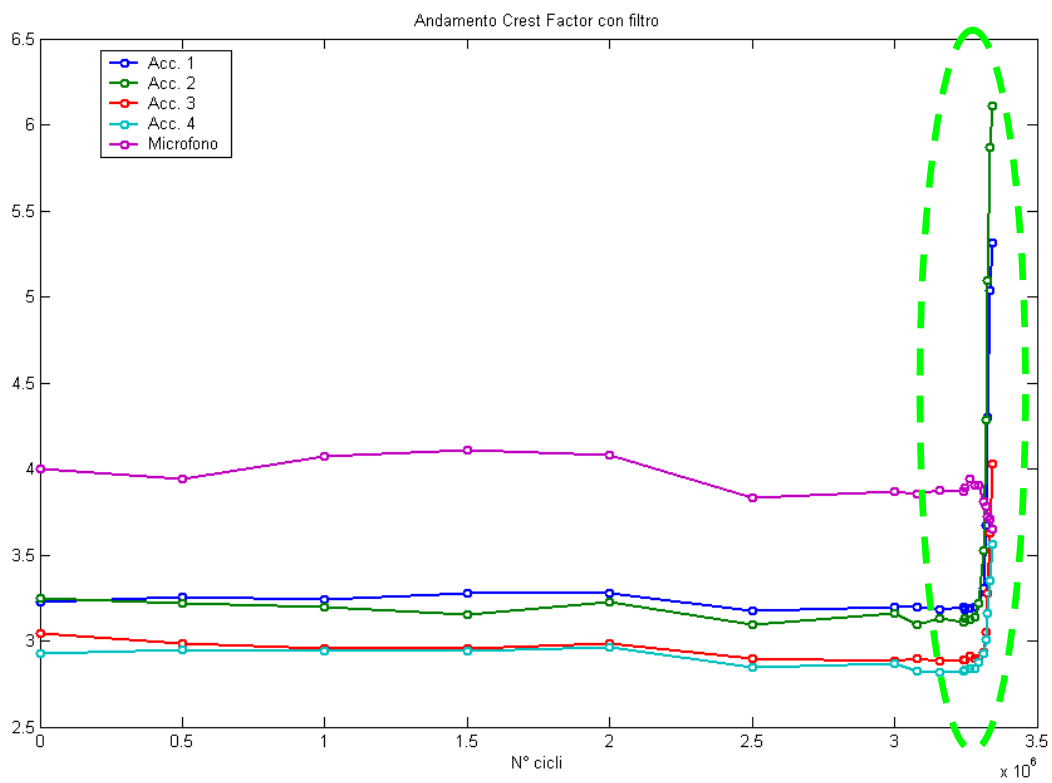


Figura D- 59 Andamento Crest Factor con filtro butter 0.3

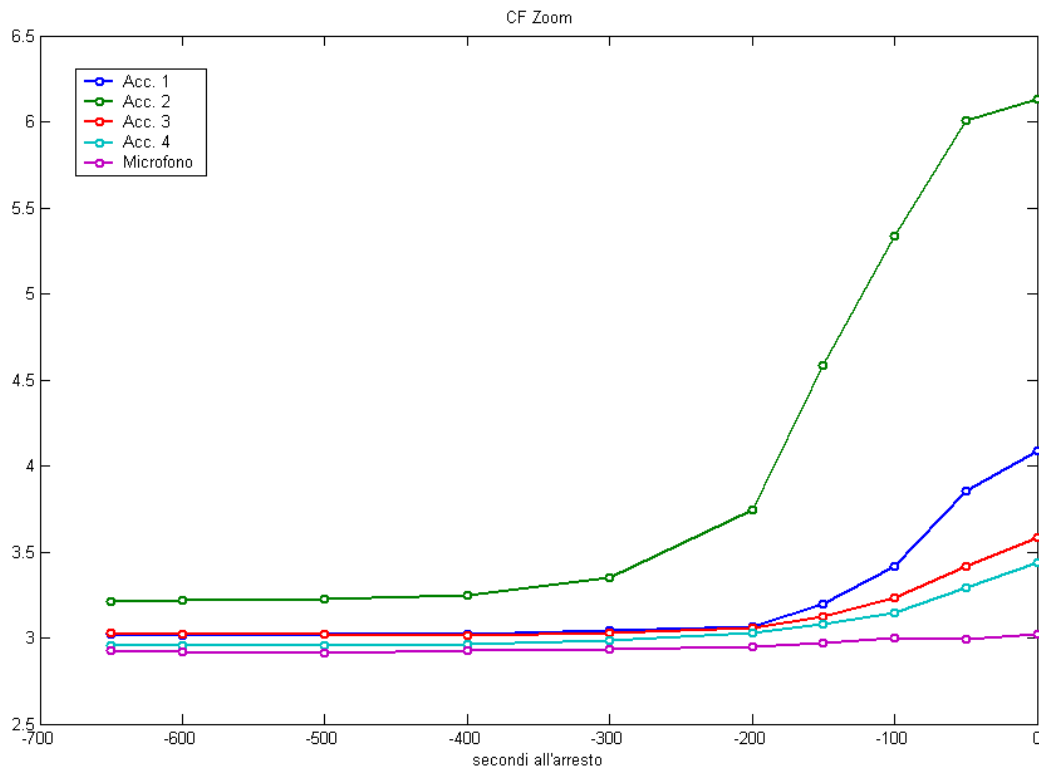


Figura D- 60 Andamento Crest Factor ultimi 10 minuti

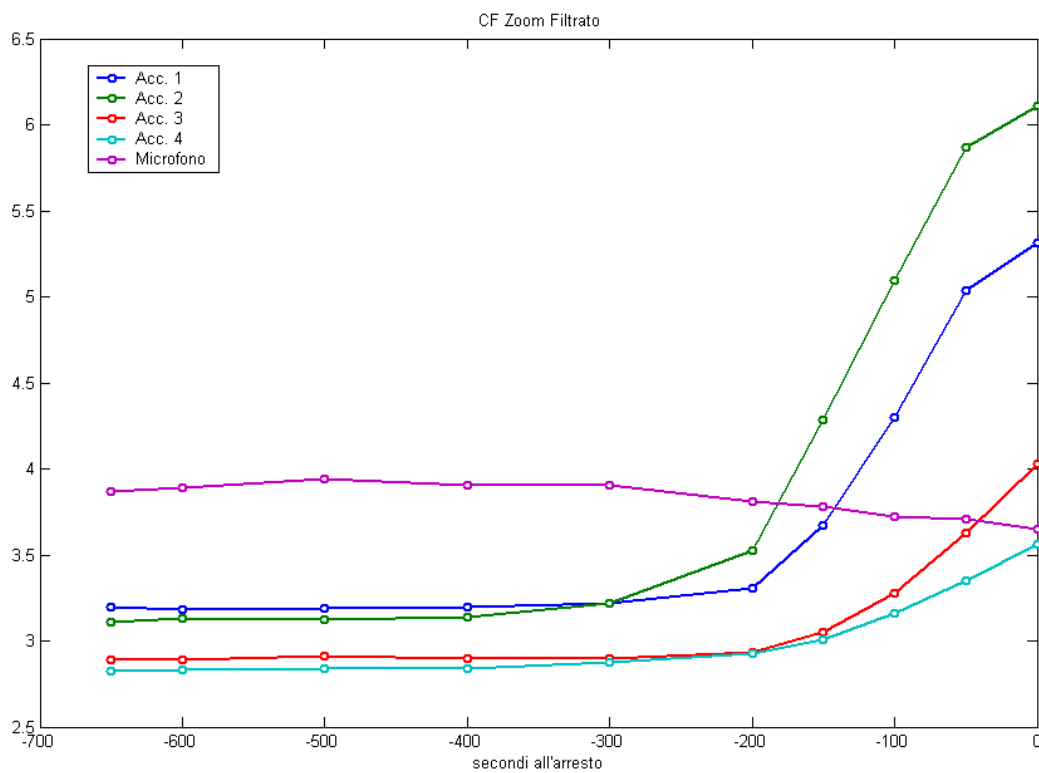


Figura D- 61 Andamento Crest Factor con filtro butter 0.3 ultimi 10 minuti

D.2 Rappresentazione Kurtosis

Le figure da D-62 a D-94 illustrano l'andamento del Kurtosis ad intervalli di ½ milione di cicli fino ai 3.000.000 di cicli, per proseguire ad intervalli di 80.000 cicli, fino a visualizzare l'andamento relativo agli ultimi 120.000 cicli, sia del segnale originale che del segnale filtrato.

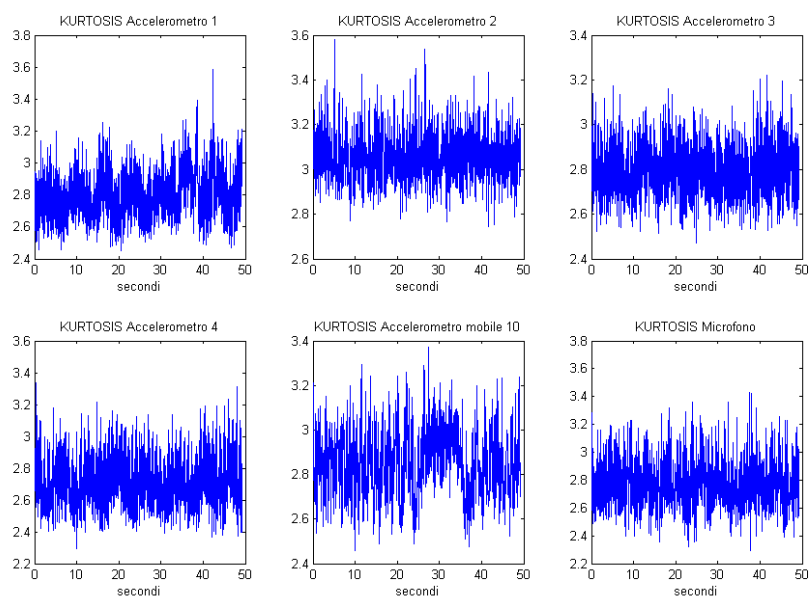


Figura D- 62 Andamento del Kurtosis a 0 Cicli

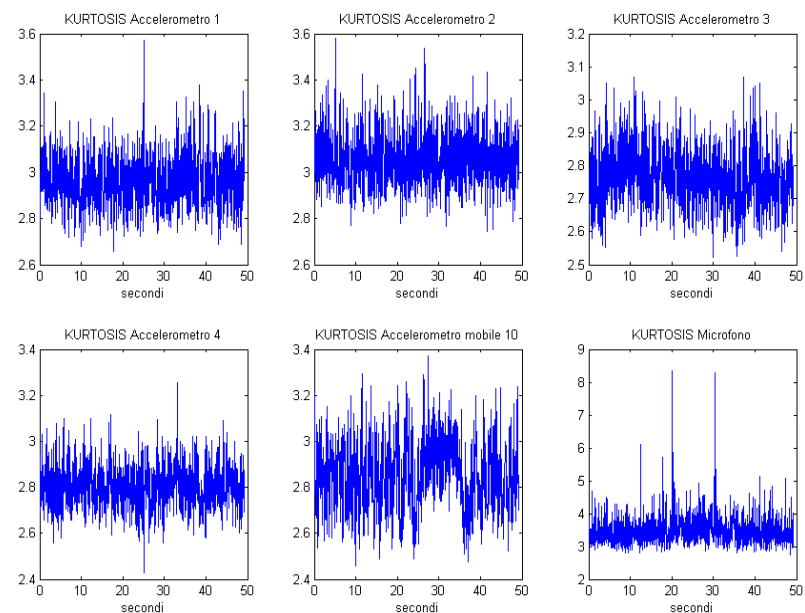


Figura D- 63 Andamento del Kurtosis a 0 Cicli Filtrato a bassa frequenza

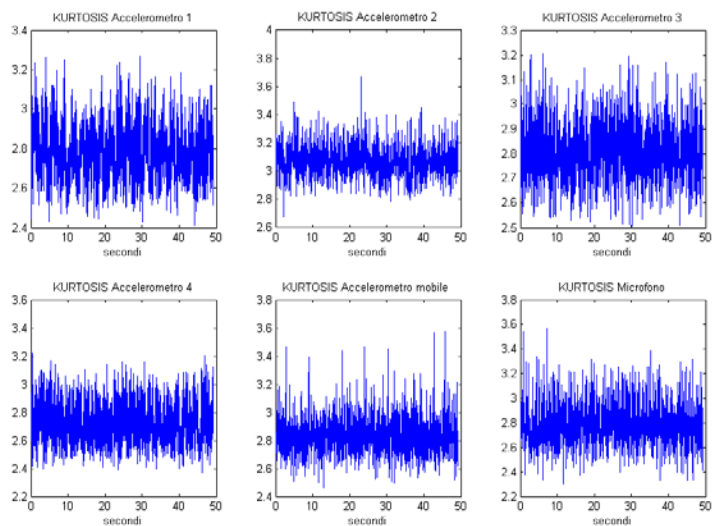


Figura D- 64 Andamento del Kurtosis a 500.000 Cicli

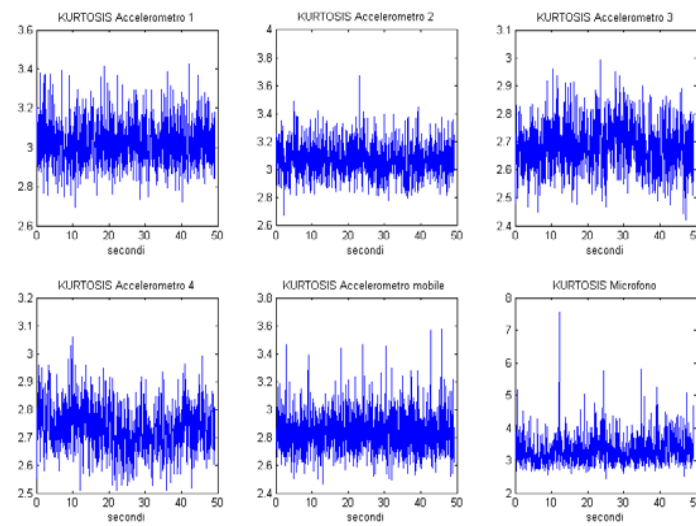


Figura D- 65 Andamento del Kurtosis a 500.000 Cicli Filtrato a bassa frequenza

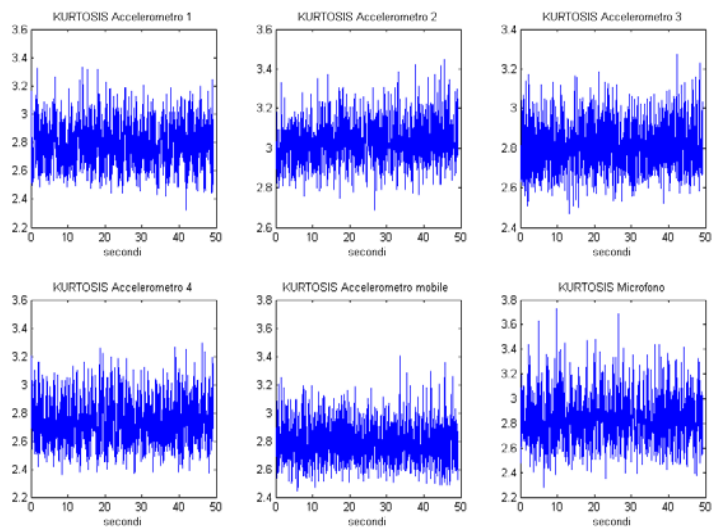


Figura D- 66 Andamento del Kurtosis a 1.000.000 Cicli

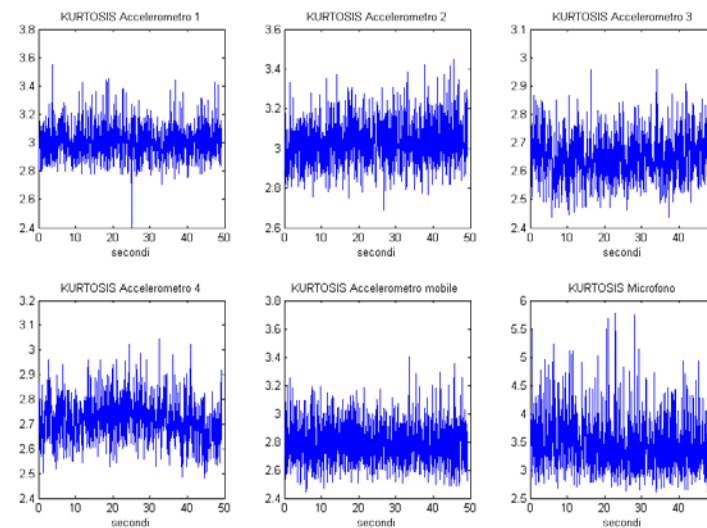


Figura D- 67 Andamento Kurtosis a 1.000.000 Cicli Filtrato a bassa frequenza

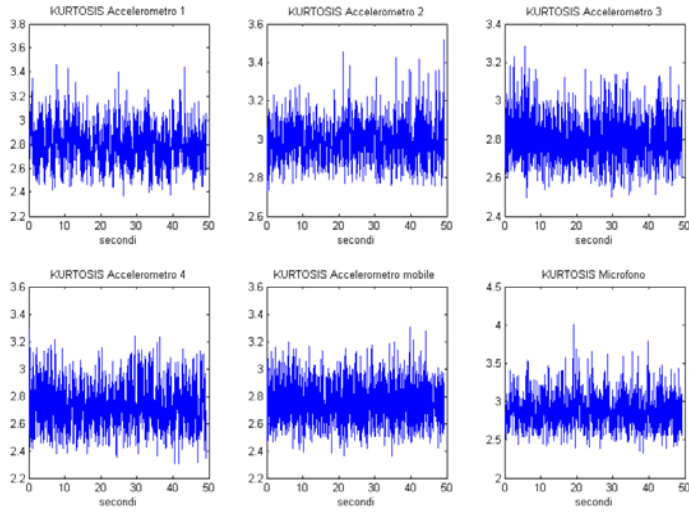


Figura D- 68 Andamento del Kurtosis a 1.500.000 Cicli

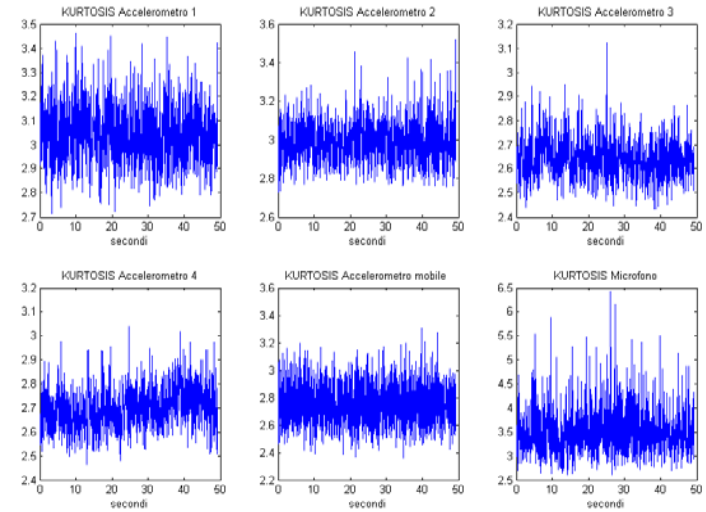


Figura D- 69 Andamento Kurtosis a 1.500.000 Cicli Filtrato a bassa frequenza

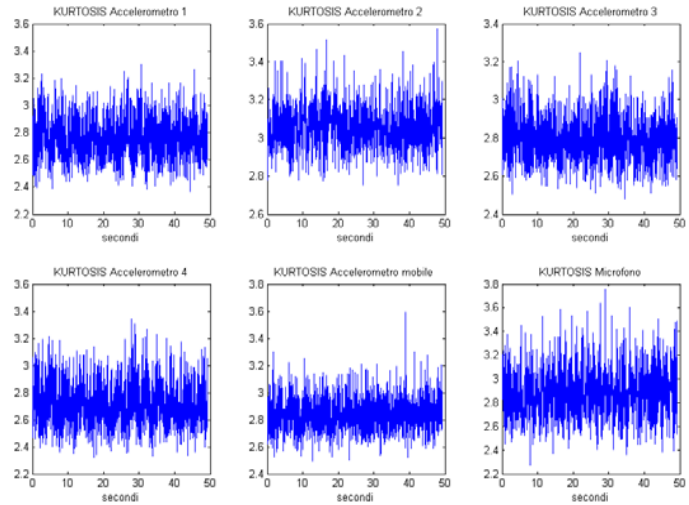


Figura D- 70 Andamento del Kurtosis a 2.000.000 Cicli

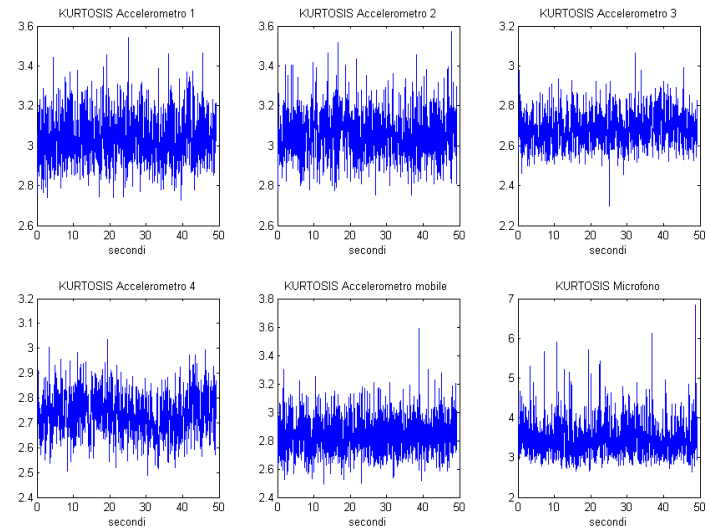


Figura D- 71 Andamento del Kurtosis a 2.000.000 Cicli Filtrato a bassa frequenza

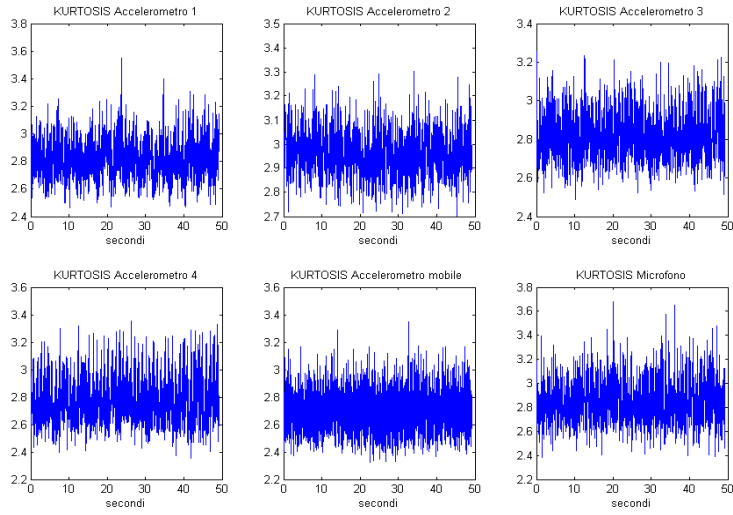


Figura D- 72 Andamento del Kurtosis a 2.500.000 Cicli

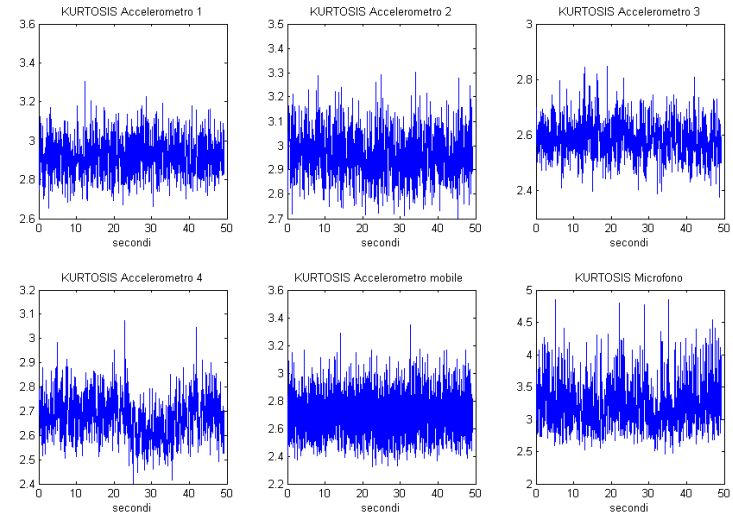


Figura D- 73 Andamento del Kurtosis a 2.500.000 Cicli Filtrato a bassa frequenza

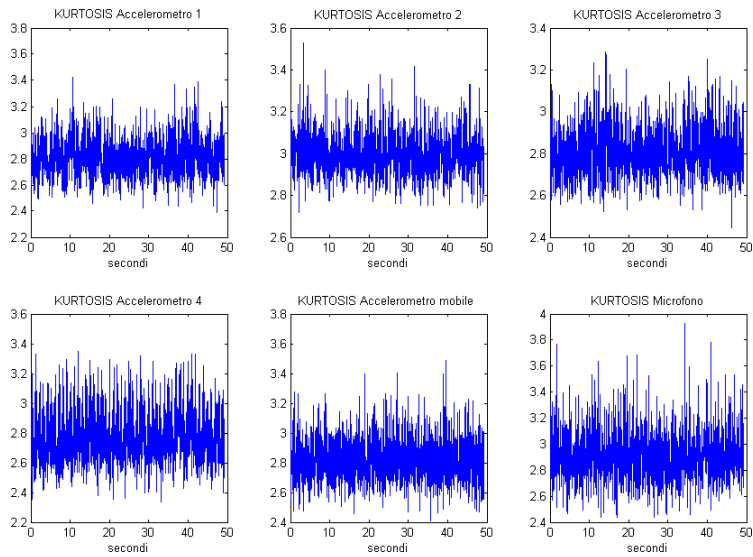


Figura D- 74 Andamento del Kurtosis a 3.000.000 Cicli

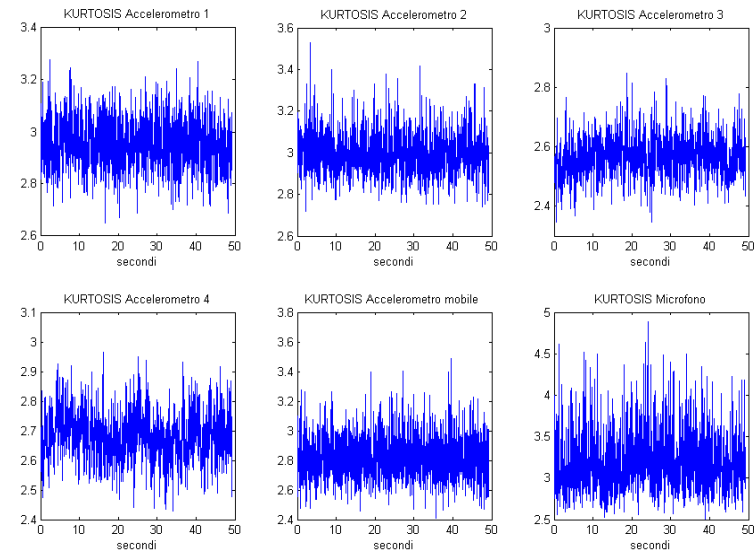


Figura D- 75 Andamento del Kurtosis a 3.000.000 Cicli Filtrato a bassa frequenza

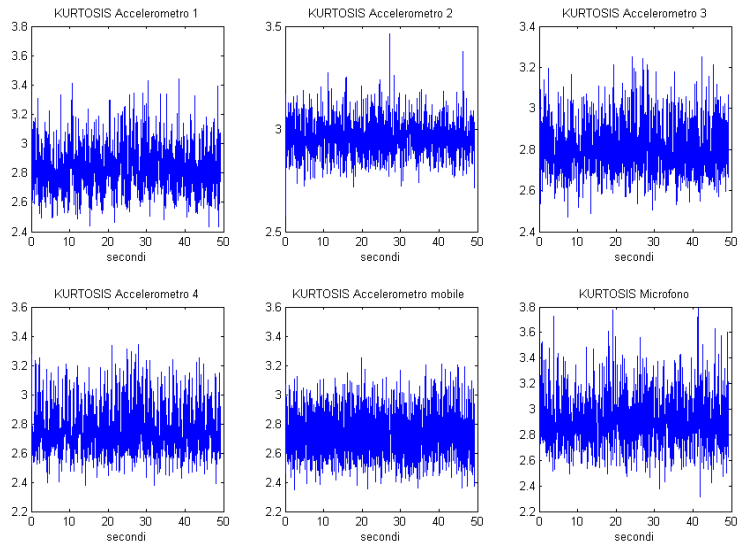


Figura D- 76 Andamento del Kurtosis a 3.080.000 Cicli

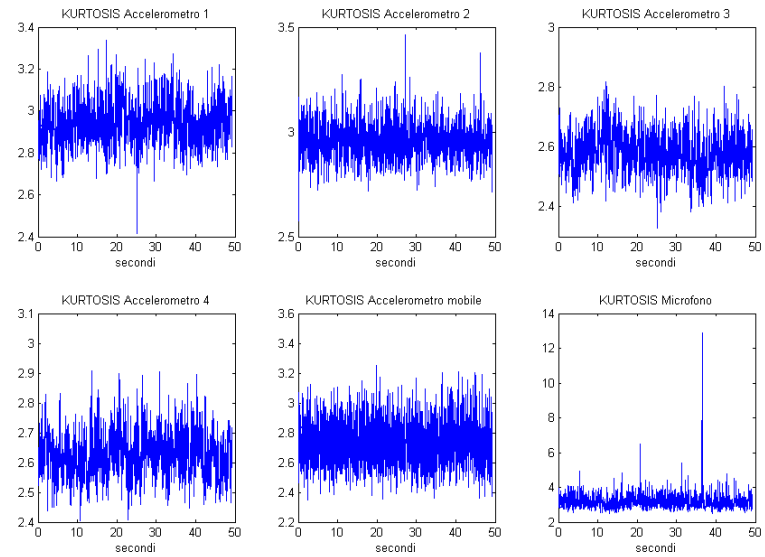


Figura D- 77 Andamento Kurtosis a 3.080.000 Cicli Filtrato a bassa frequenza

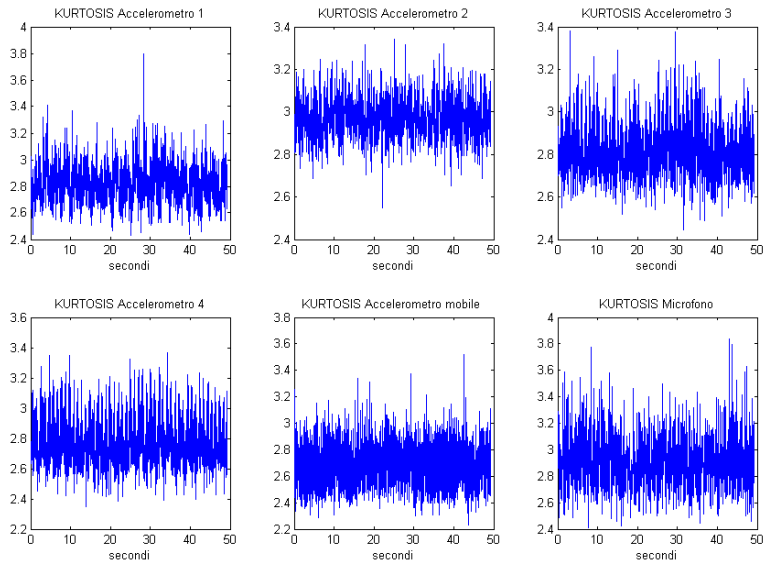


Figura D- 78 Andamento del Kurtosis a 3.160.000 Cicli

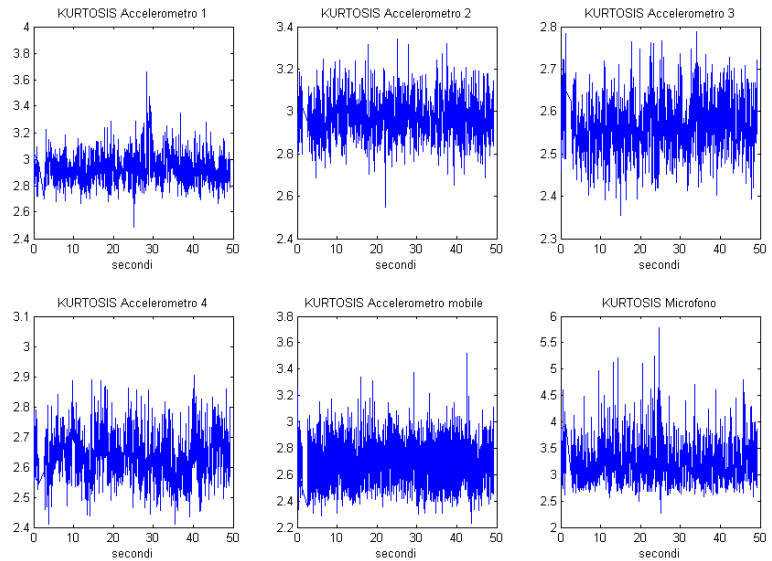


Figura D- 79 Andamento del Kurtosis a 3.160.000 Cicli Filtrato a bassa frequenza

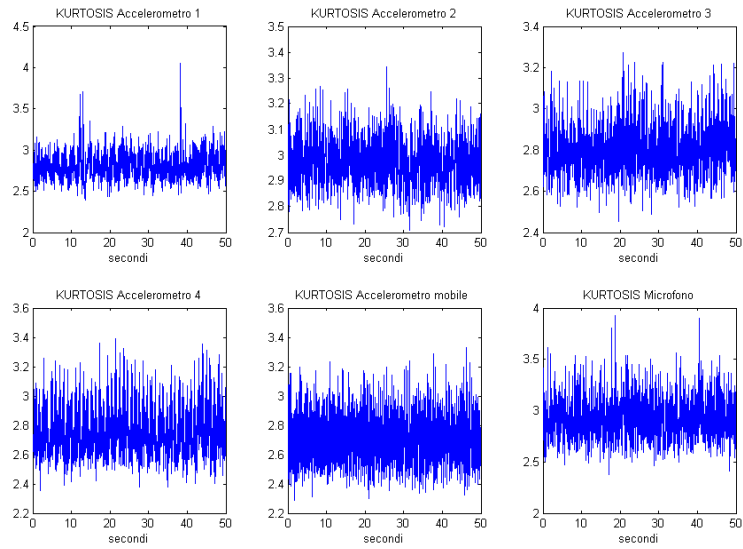


Figura D- 80 Andamento del Kurtosis a 3.240.000 Cicli

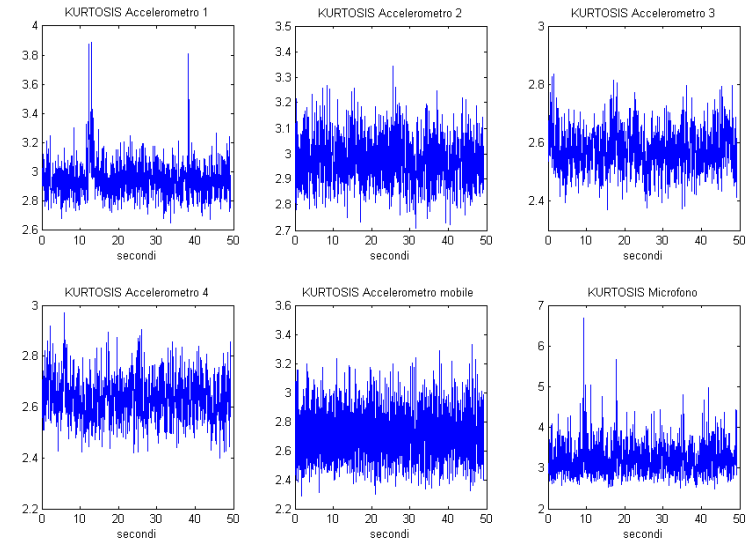


Figura D- 81 Andamento del Kurtosis a 3.240.000 Cicli Filtrato a bassa frequenza

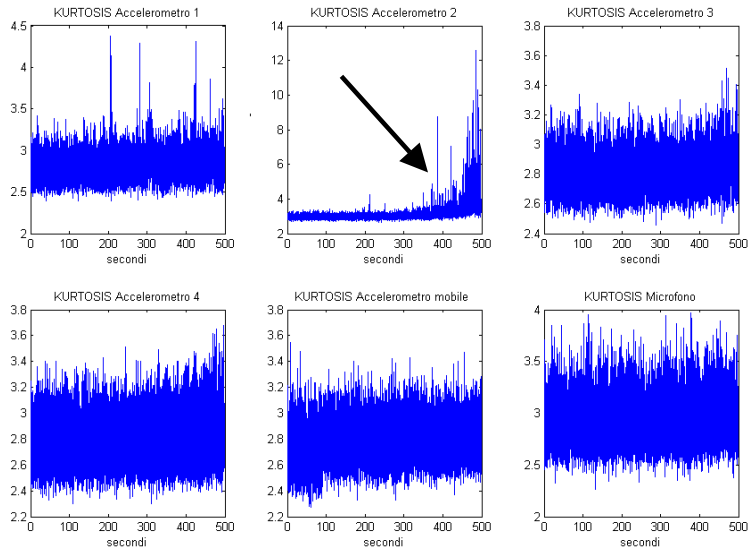


Figura D- 82 Andamento del Kurtosis da 3.240.000 a 3.320.000 Cicli

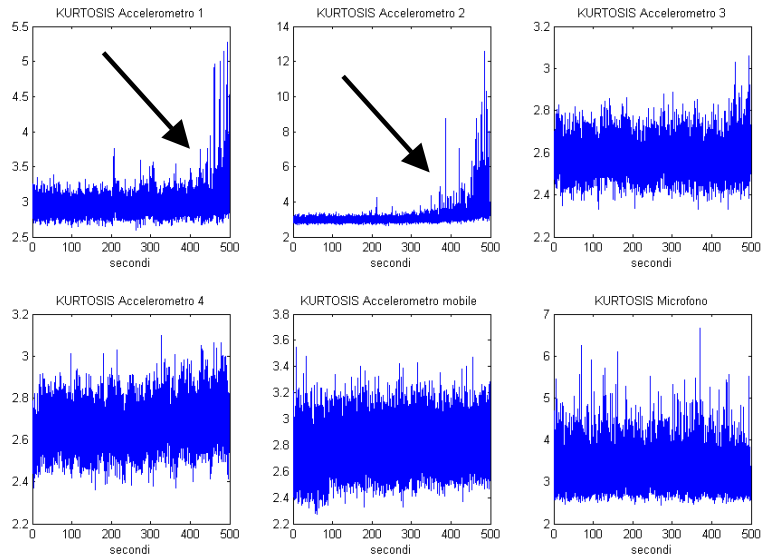


Figura D-83 Andamento Kurtosis da 3.240.000 a 3.320.000 Cicli Filtro a bassa fr.

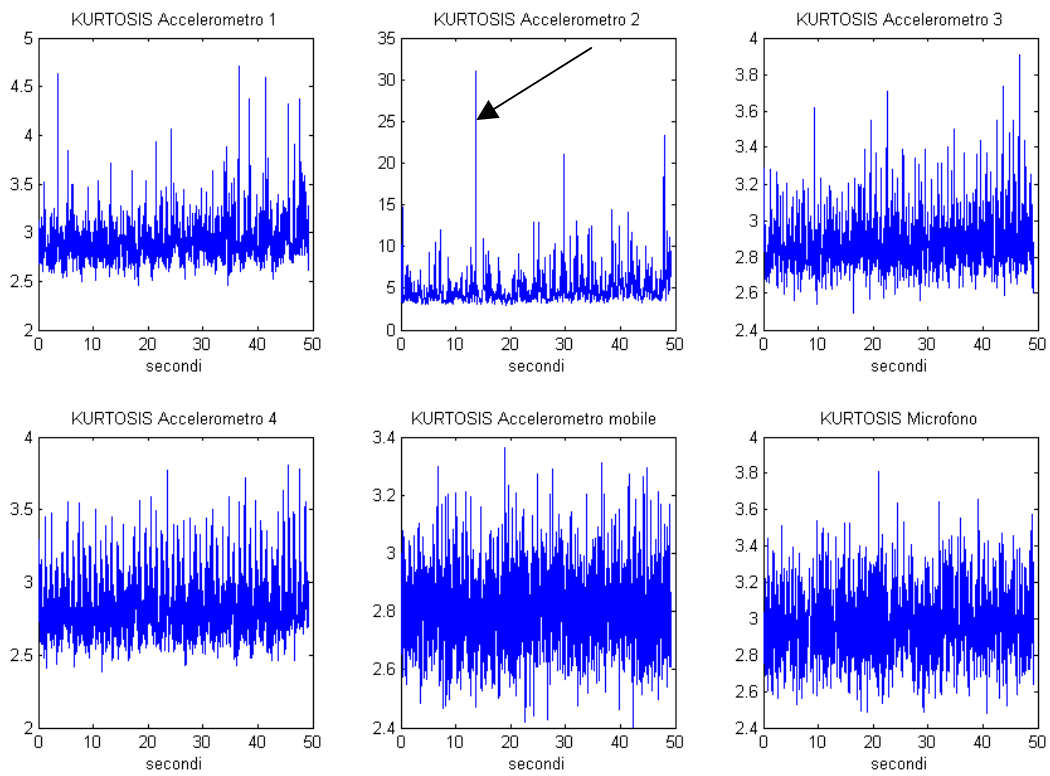


Figura D- 84 Andamento del Kurtosis a 3.320.000 Cikli

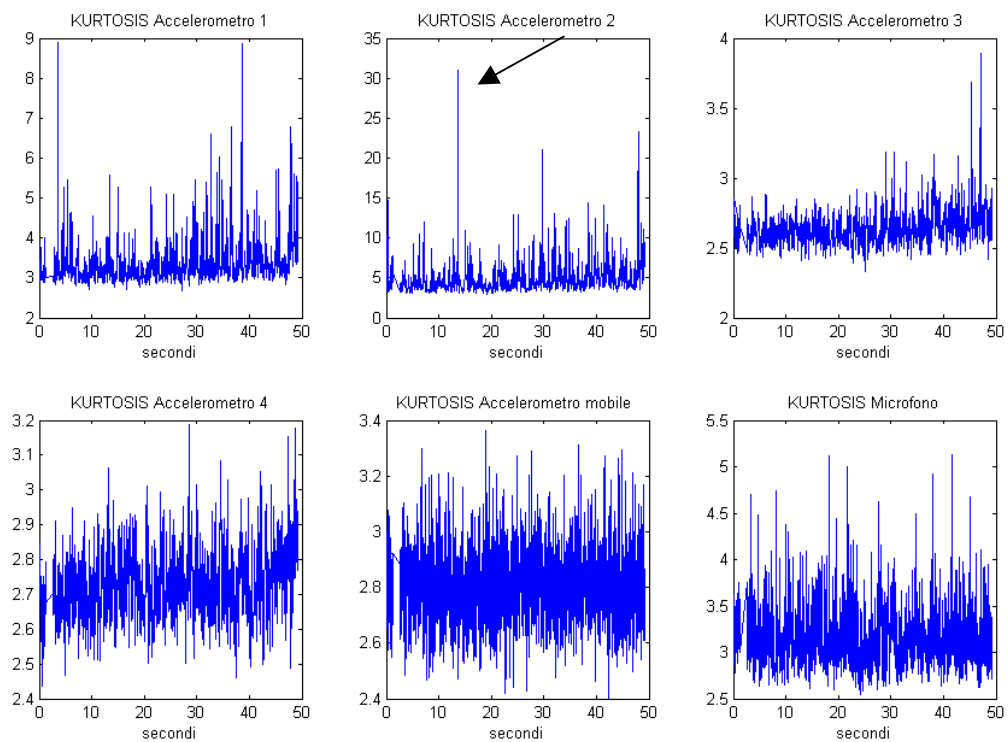


Figura D- 85 Andamento del Kurtosis a 3.320.000 Cikli Filtrato a bassa frequenza

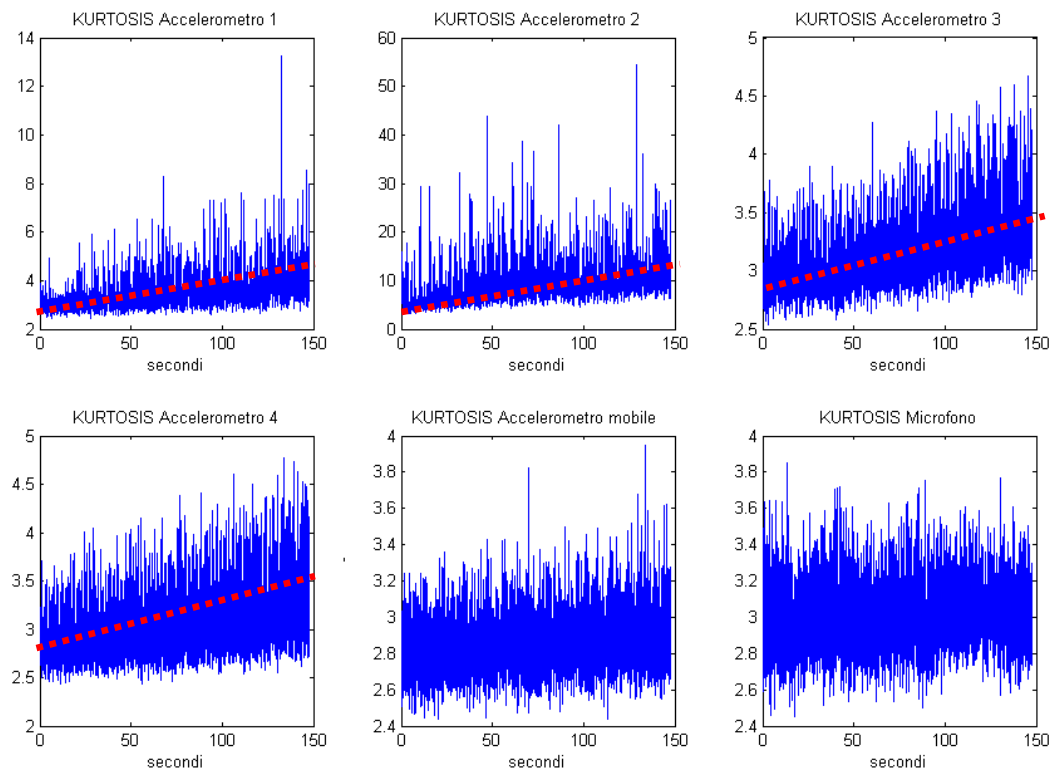


Figura D- 86 Andamento del Kurtosis da 3.320.000 Cicli ad arresto banco

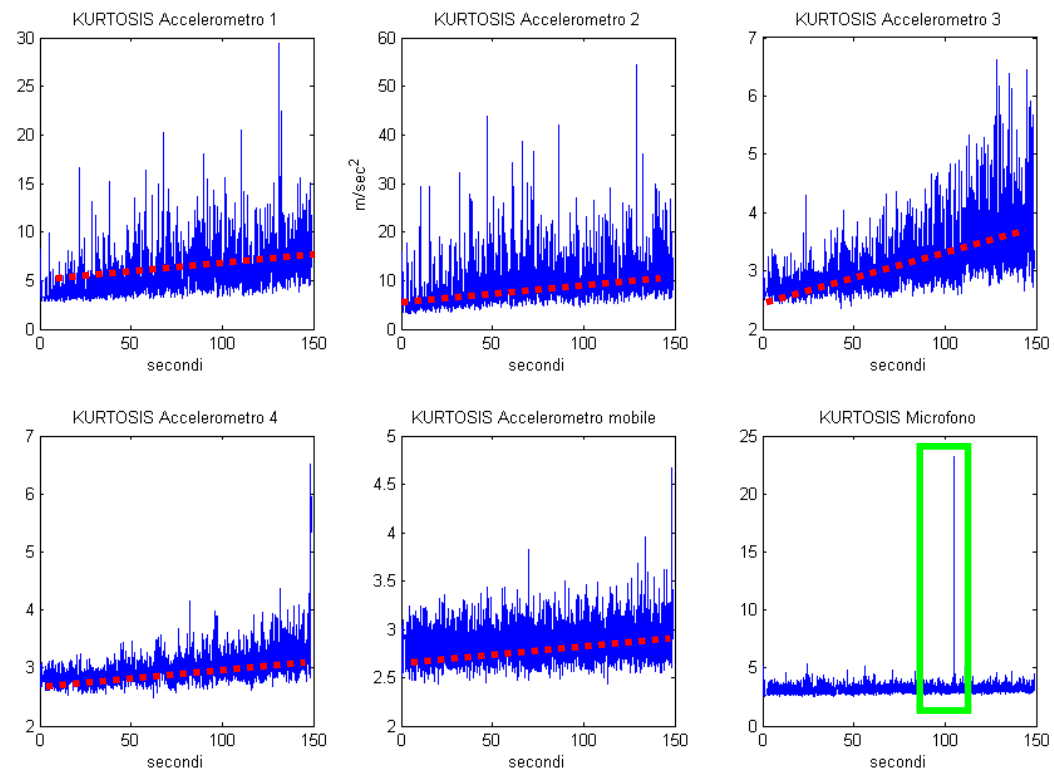


Figura D- 87 Andamento del Kurtosis da 3.320.000 Cicli ad arresto banco Filtrato a bassa frequenza

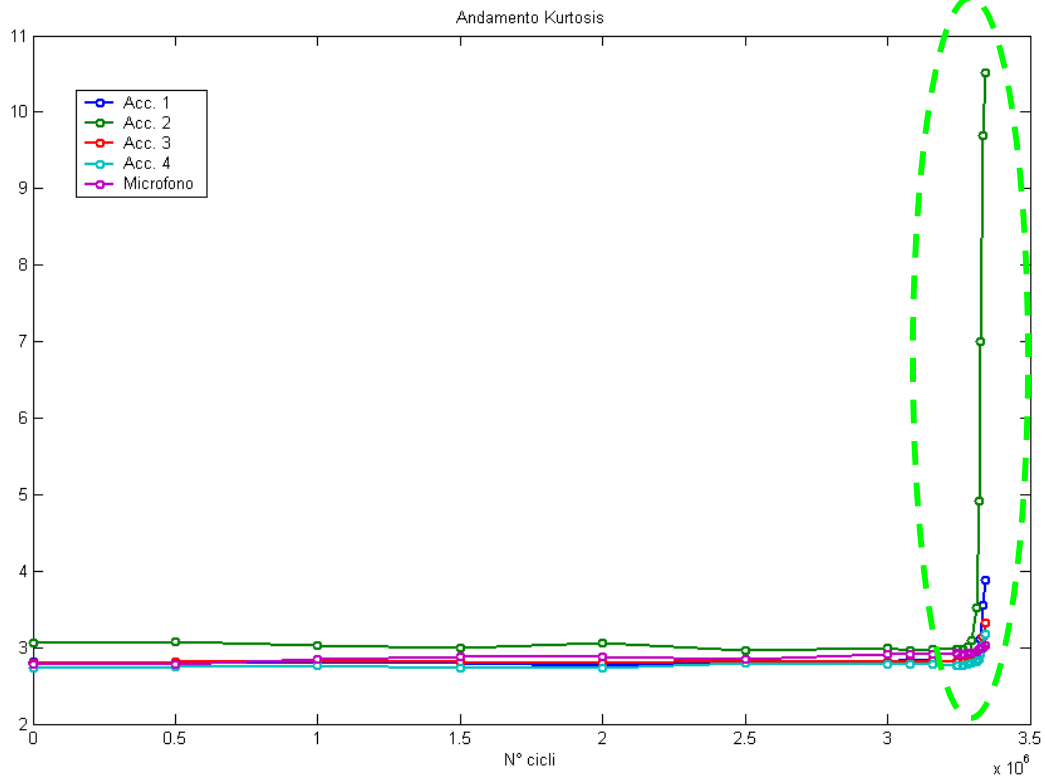


Figura D- 88 ANDAMENTO KURTOSIS

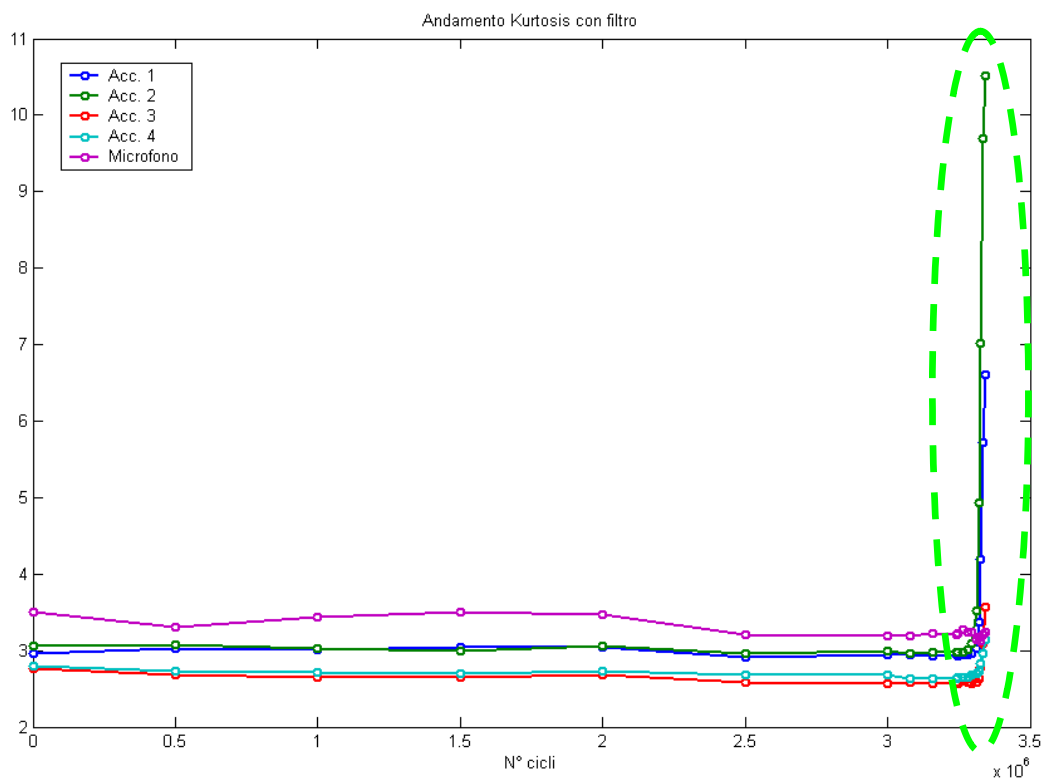


FIGURA D- 89 ANDAMENTO KURTOSIS CON FILTRO BUTTER 0.3

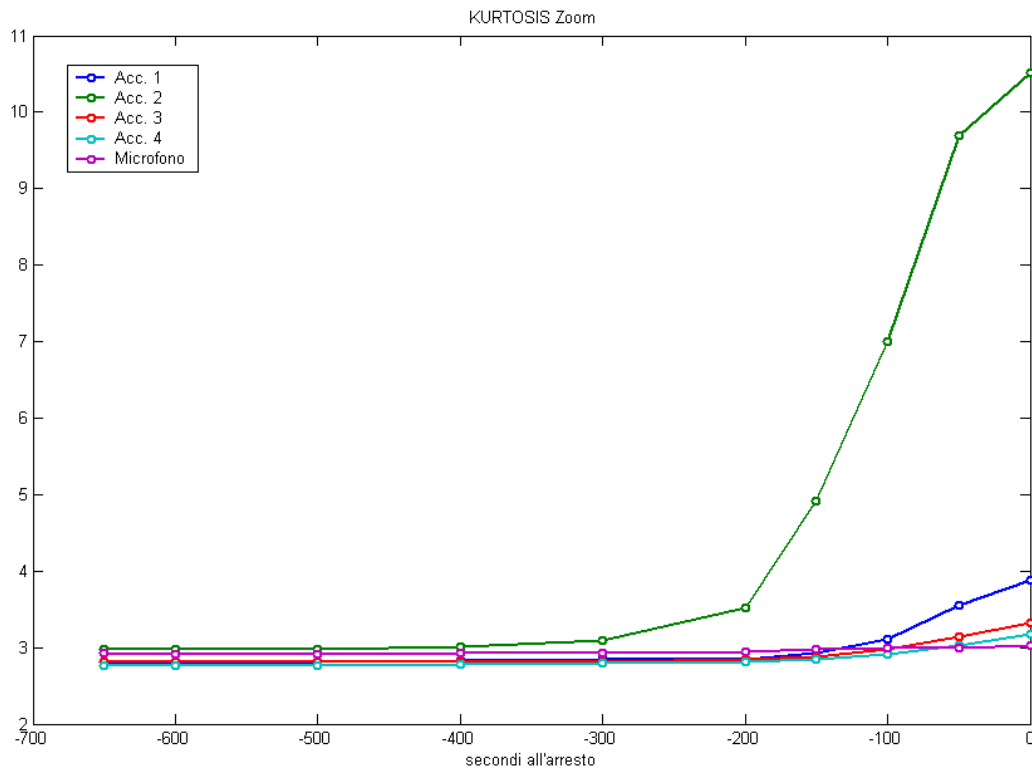


FIGURA D- 90 ANDAMENTO KURTOSIS ULTIMI 10 MINUTI

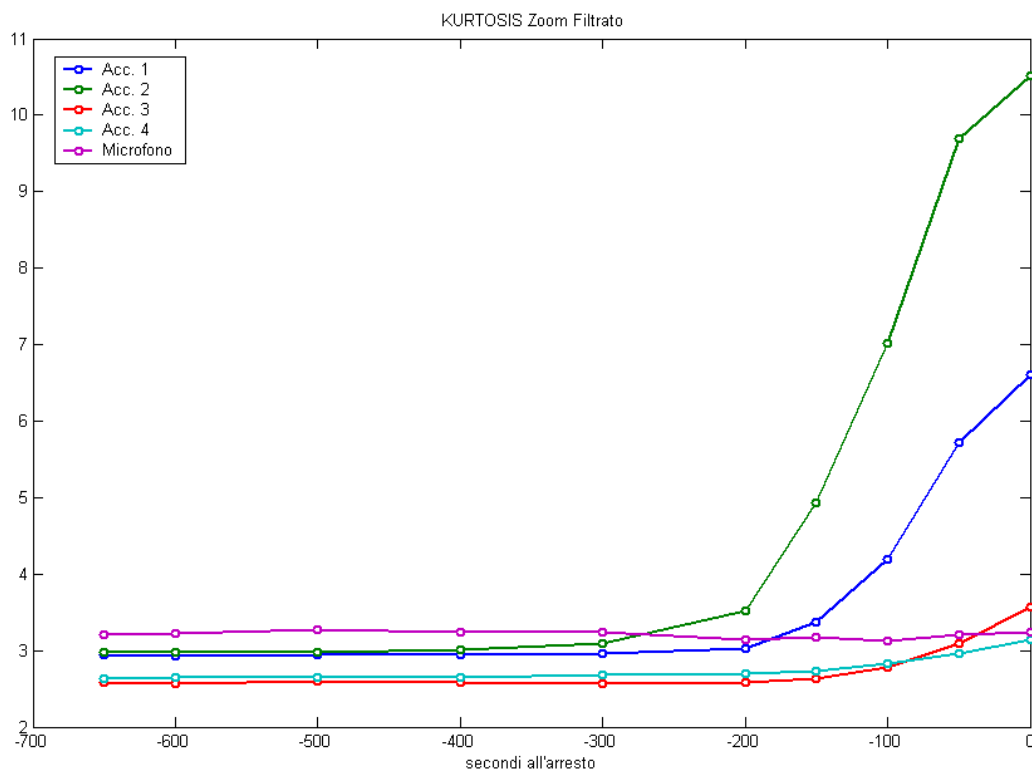


FIGURA D- 91 ANDAMENTO KURTOSIS CON FILTRO BUTTER 0.3 ULTIMI 10 MINUTI