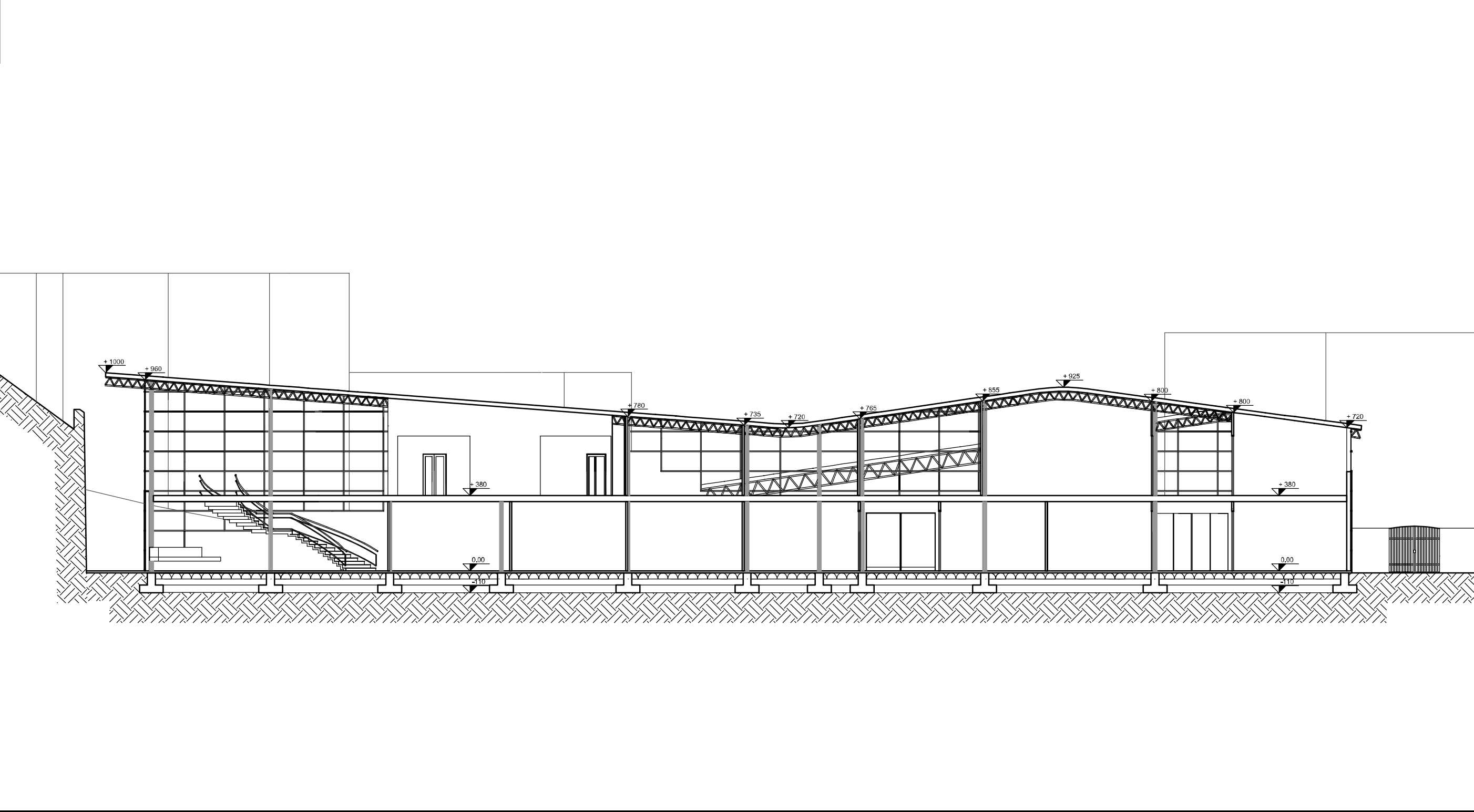
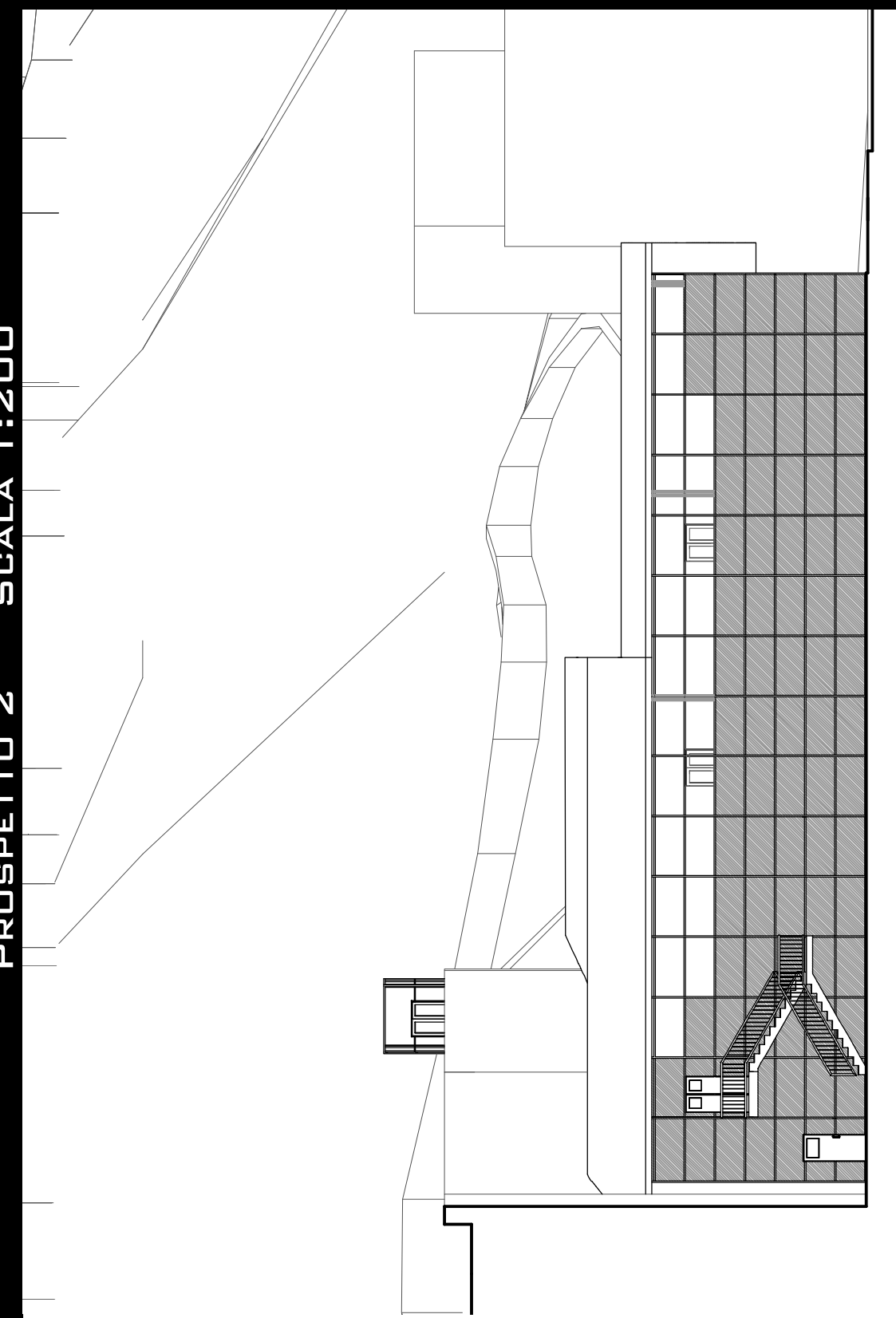


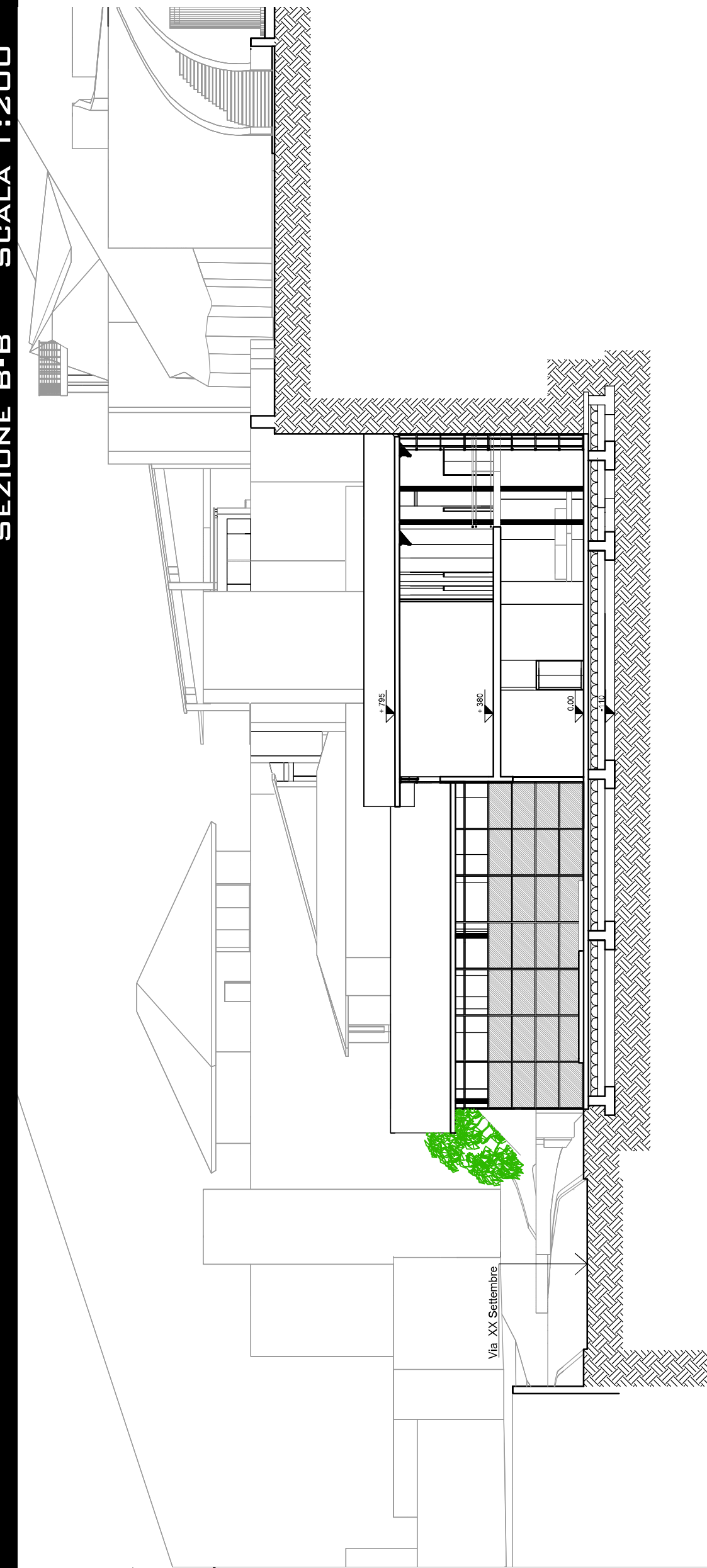
PROSPETTO 1 SCALA 1:200



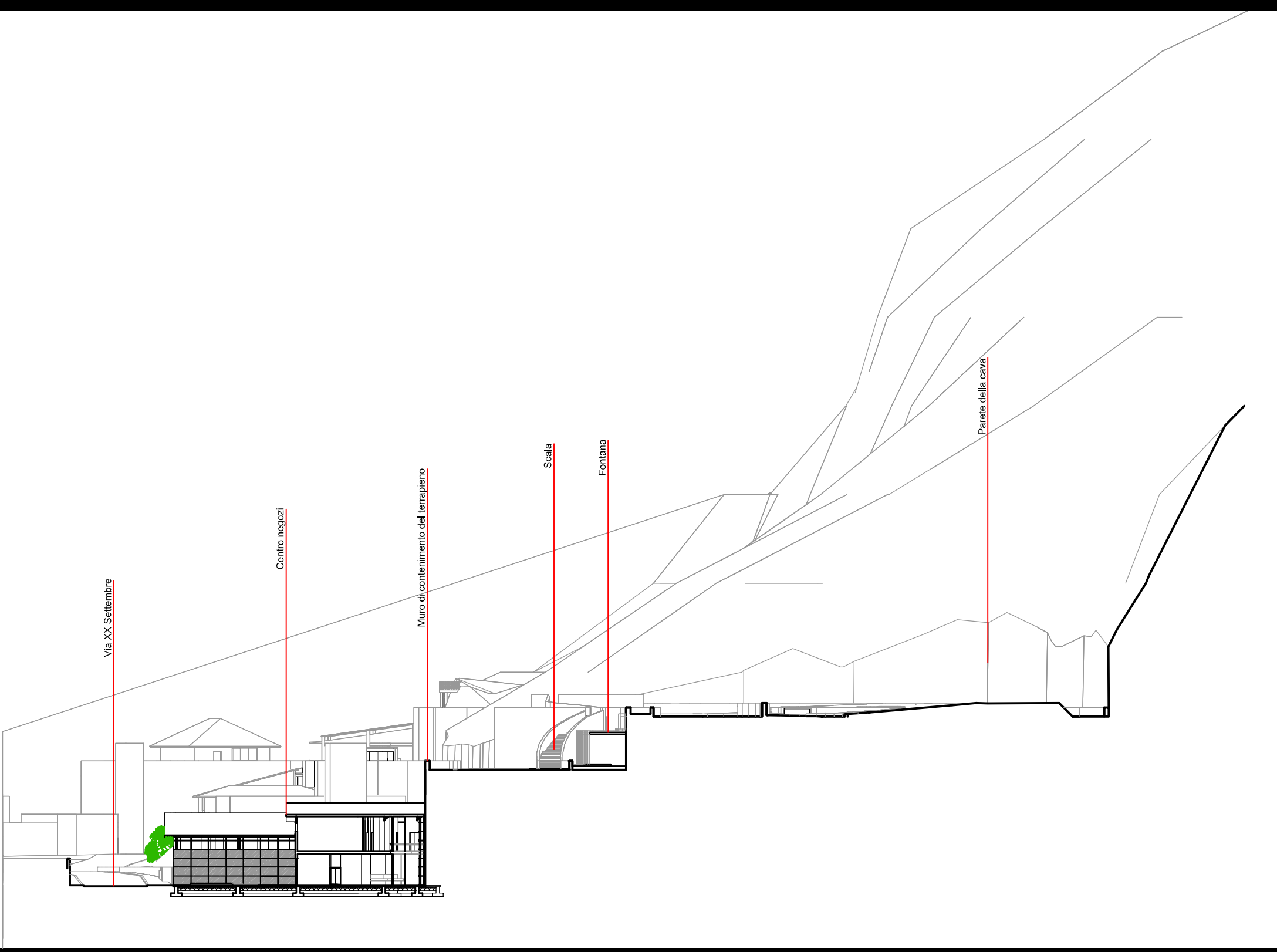
SEZIONE A-A SCALA 1:200



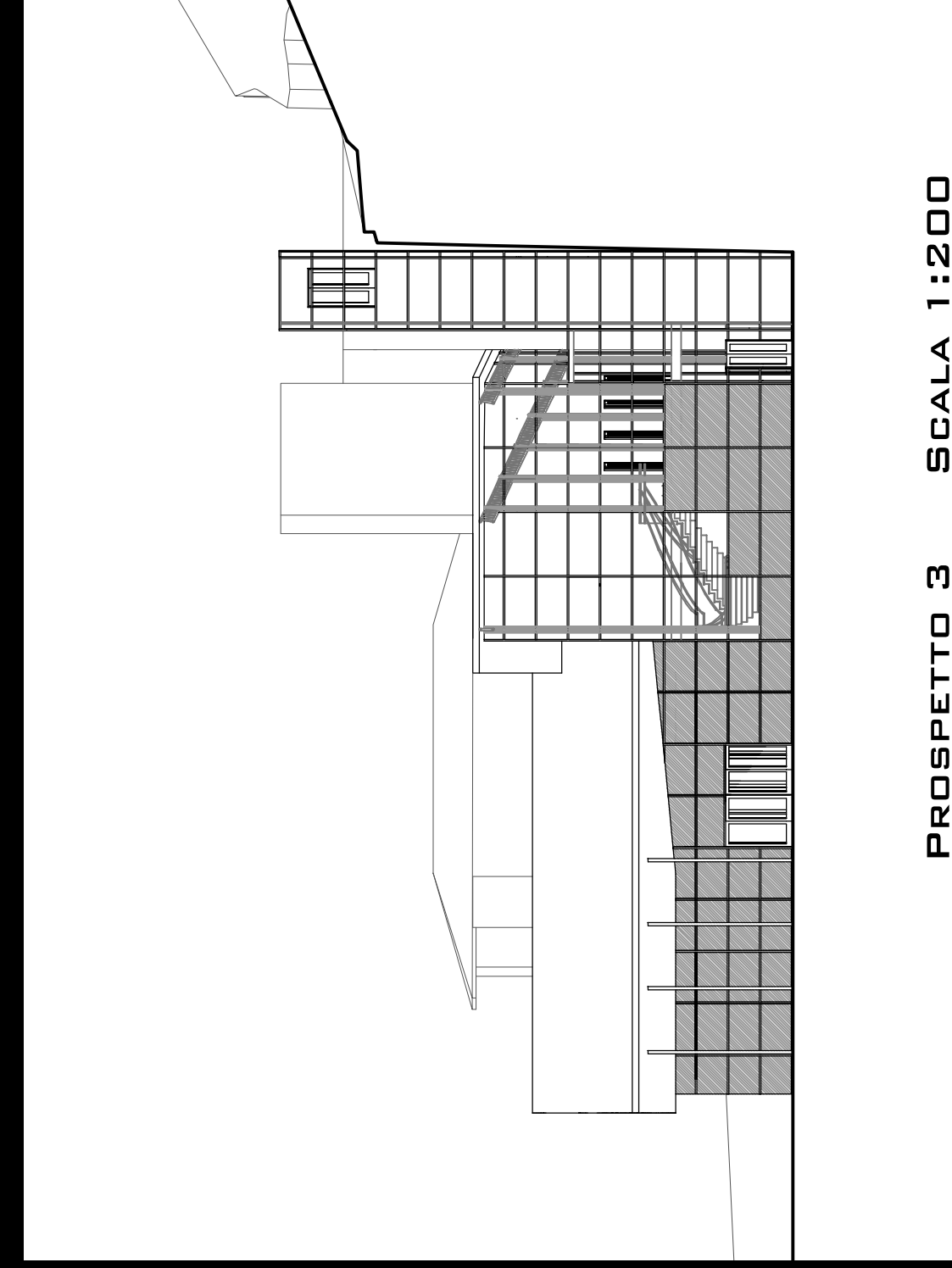
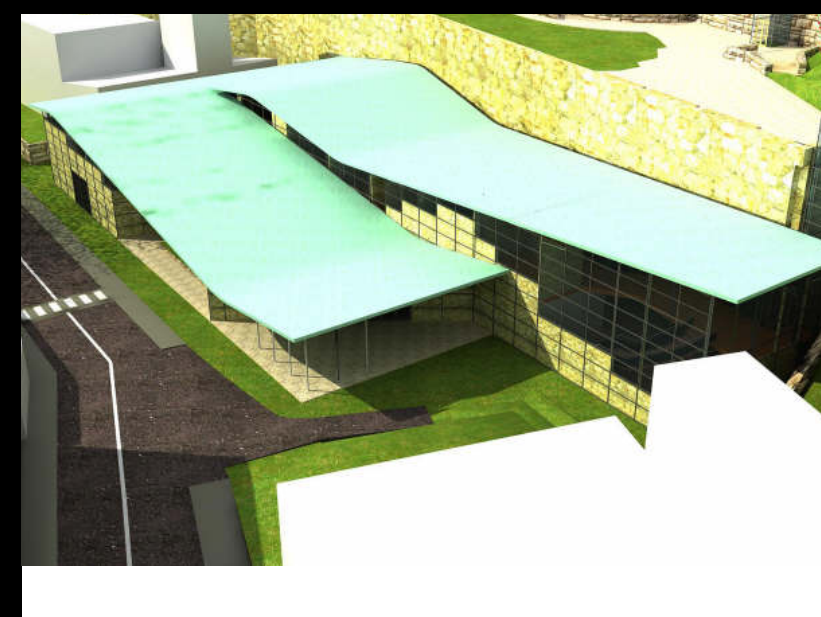
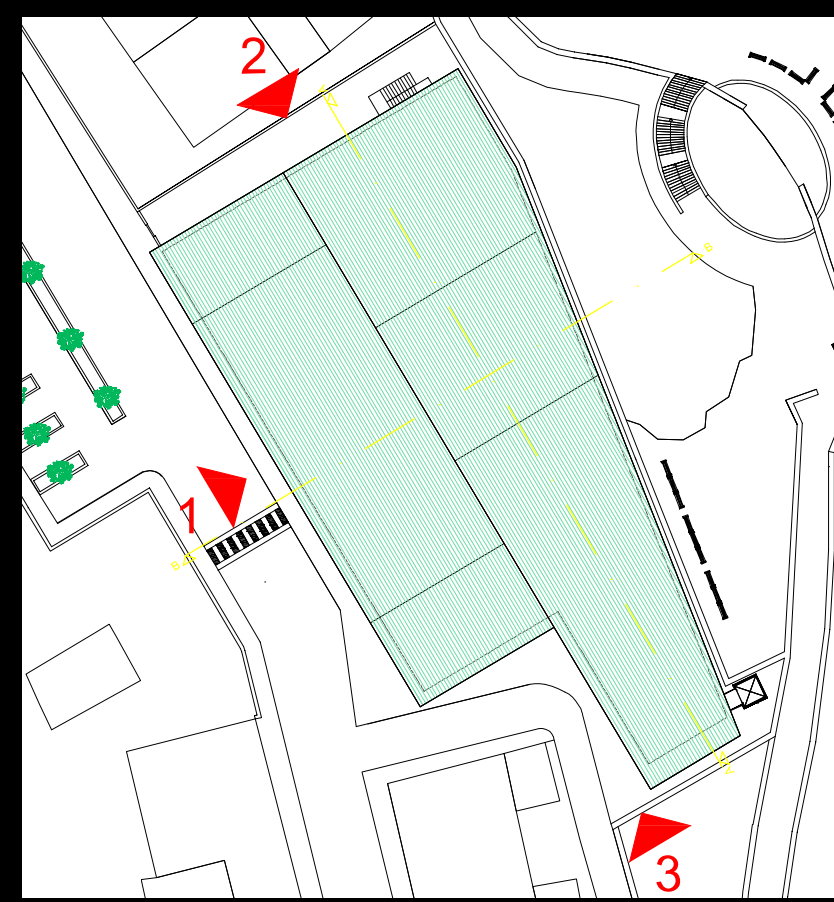
PROSPETTO 2 SCALA 1:200



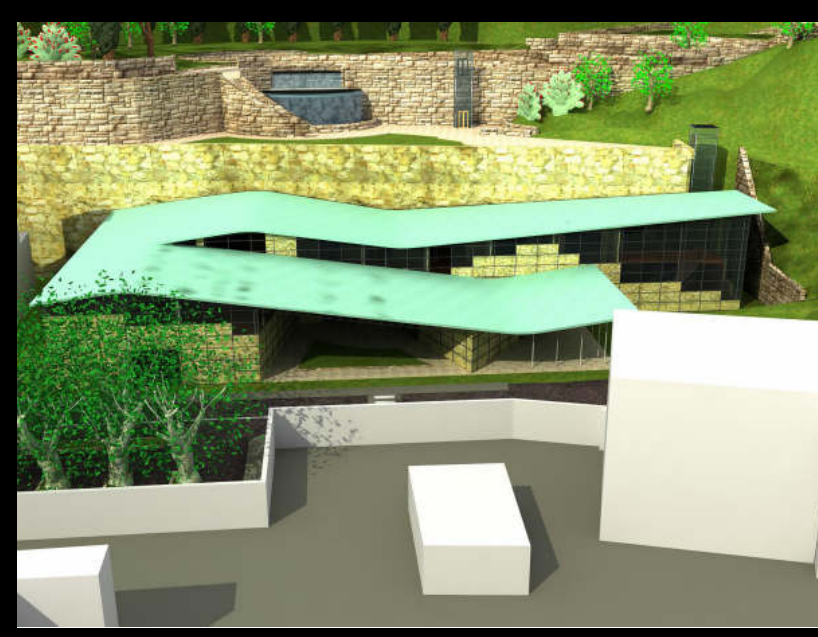
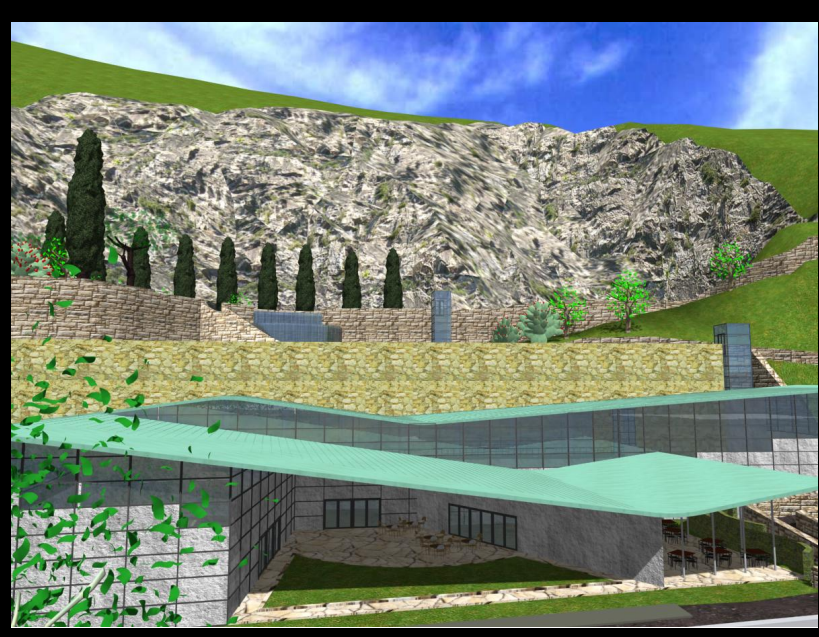
SEZIONE B-B SCALA 1:200



SEZIONE B-B SCALA 1:500



PROSPETTO 3 SCALA 1:200



TESI DI LAUREA

PROGETTAZIONE INTEGRATA SOSTENIBILE NELLA RIQUALIFICAZIONE DELL'AREA ESTRATTIVA DI CALDACCOLI IN SAN GIULIANO TERME. CENTRO NEGOZI

CANDIDATA

FABIANA DOA

UNIVERSITA' DI PISA
CORSO DI LAUREA IN INGEGNERIA EDILE
A.A. 2006/2007
RELATORI
PROF. ROBERTO GIUSEPPE PIERINI
PROF. MASSIMO ROVAI
ING. PAOLO GALANTINI